



21st April 2015

the technical analyst

AWARDS 2012

FINALIST BEST COMMODITY, ENERGY & POWER
RESEARCH & STRATEGY

Summary

SOY

- + Soy Bean
- + Soy Bean Oil
- + Soy Bean Meal

OTHER

- + Corn
- + Rapeseed



Soy and Grains Technical Analysis

Mark Sturdy

Disclaimer

Authorised and regulated
by the FCA



Summary

SOY Markets : *Last week:* **Sell Meal with close stops.**

This week: The Meal market (the only one of the Soy charts that is interesting) is re-testing the breakdown levels. If the market can't get back above 314.50 the bears ill be emboldened.

Summary

SOY

- + Soy Bean
- + Soy Bean Oil
- + Soy Bean Meal

OTHER

- + Corn
- + Rapeseed

SOY: Soy Bean



Monthly Chart continuation:

The breakdown of the rising trend is clear.

The pause since September 2014 is clearly triangular.

A continuation pattern....

Moreover are we in the grip of a H&S reversal pattern?



Summary

SOY

- + Soy Bean
- + Soy Bean Oil
- + Soy Bean Meal

OTHER

- + Corn
- + Rapeseed

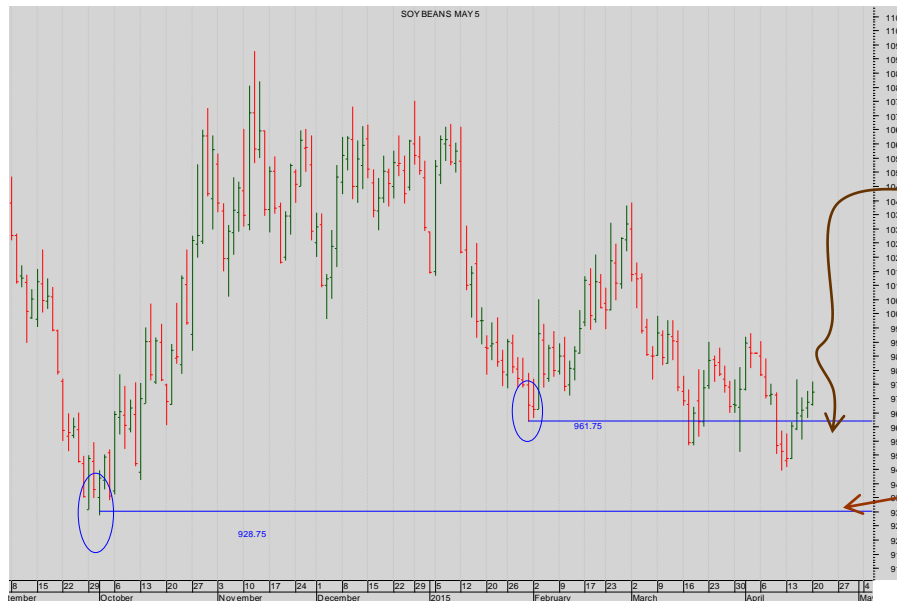
SOY: Soy Bean



Weekly Chart – Continuation:

The Gap has been good resistance

And now we are pushing beneath 955.



Daily Chart May 15:

But this lacks clarity.

Wait for a break beneath 961.75 before looking at the bear possibilities.

And even now we want a further break beneath 928.



SOY: Soy Bean Oil

Summary

SOY

- + Soy Bean
- + Soy Bean Oil
- + Soy Bean Meal

OTHER

- + Corn
- + Rapeseed



Monthly Chart Continuation:

Long and medium-term bears need a break- say beneath 28



Weekly Chart – Continuation:

But this lacks clarity...

And for the last 19 weeks the market has stalled.

The short-term structure is too indistinct to trade.

More



SOY: Soy Bean Oil

Summary

SOY

- + Soy Bean
- + Soy Bean Oil
- + Soy Bean Meal

OTHER

- + Corn
- + Rapeseed



Daily Jul 15 Chart

Here too there is there is a total lack of convincing structure.



Summary

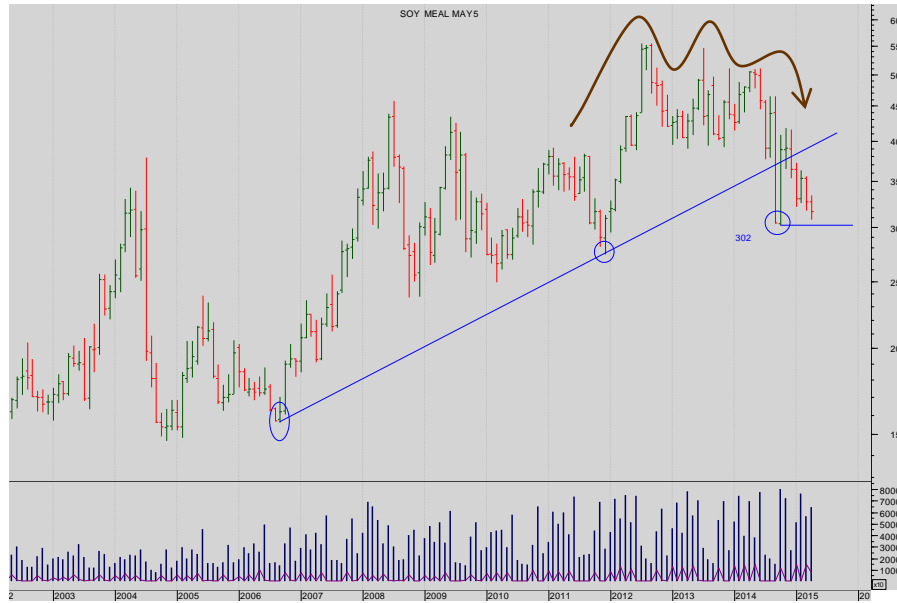
SOY

- + Soy Bean
- + Soy Bean Oil
- + Soy Bean Meal

OTHER

- + Corn
- + Rapeseed

SOY: Soy Bean Meal

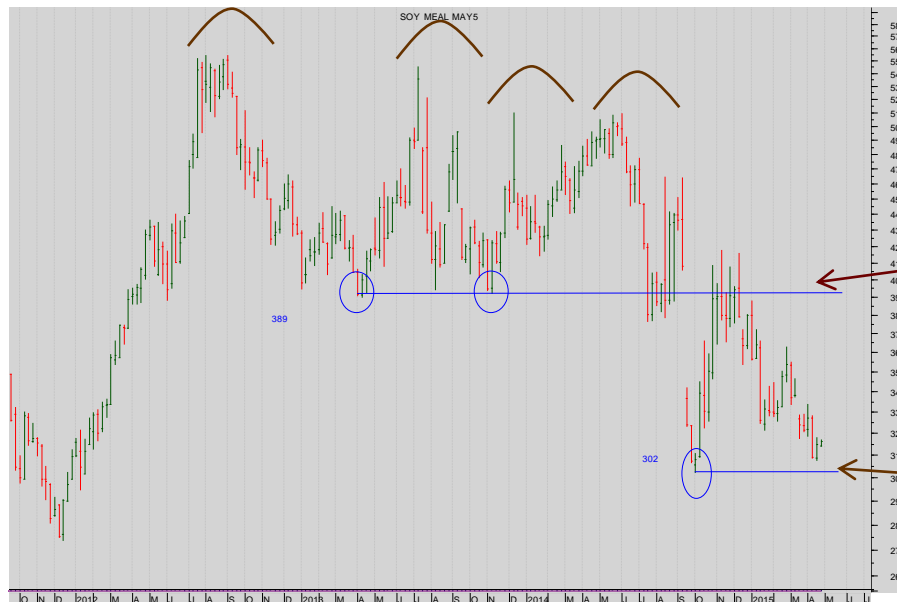


Monthly Chart Continuation:

The diagonal support has been smashed.

And a Double/Triple Top completed....

Look closer.



Weekly Chart – continuation:

This is much more interesting. Note the completed Double (Triple?) Top.

Note too the failed retracement to the breakout level which is good resistance...

The market looks very vulnerable to selling...

We bears want a break of 302.

But might sell before that if a continuation triangle were to be completed.

More



SOY: Soy Bean Meal

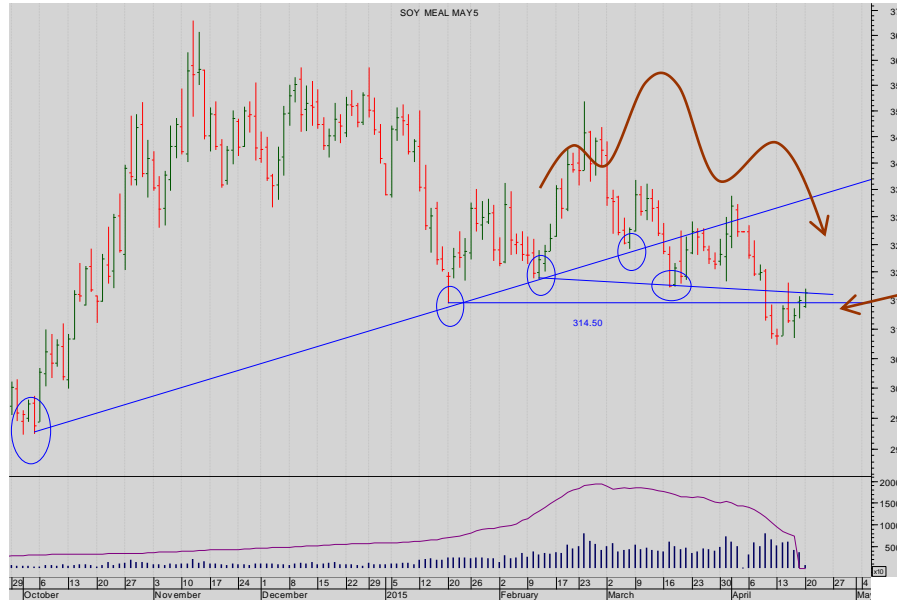
Summary

SOY

- + Soy Bean
- + Soy Bean Oil
- + Soy Bean Meal

OTHER

- + Corn
- + Rapeseed



Daily Chart May 15

This is frustrating .

The broken diagonal

A clumsy Head and Shoulders Top ...

Reassess the bear prospects on a break of 314.50...

We are bears with stops above at 320..... now the neckline is being tested...



Summary

CORN and RAPESEED and WHEAT: *Last week: Watch Corn for further selling. And then sell.*
This week: The Corn has never really registered sufficient bear breakdown to really convince. So the rally back within the trading range has been disappointing. Only sell a break of 373.50. Equally, sell a confirmed breakdown of 489/496. And by the same token, BUY a break up through 364 in the Rapeseed.

Summary

SOY

- + Soy Bean
- + Soy Bean Oil
- + Soy Bean Meal

OTHER

- + Corn
- + Rapeseed

OTHER : Corn



Monthly Cont. Chart

The triple failure at the 800 level (having tested above it and been unable to sustain that break) was ominous for the bulls.

The completed a long-term Double Top encouraged fresh selling...

(The minimum move for the Double Top? About 300)

This is a well-structured bear market.

Look closer.

More



OTHER : Corn

Summary

SOY

- + Soy Bean
- + Soy Bean Oil
- + Soy Bean Meal

OTHER

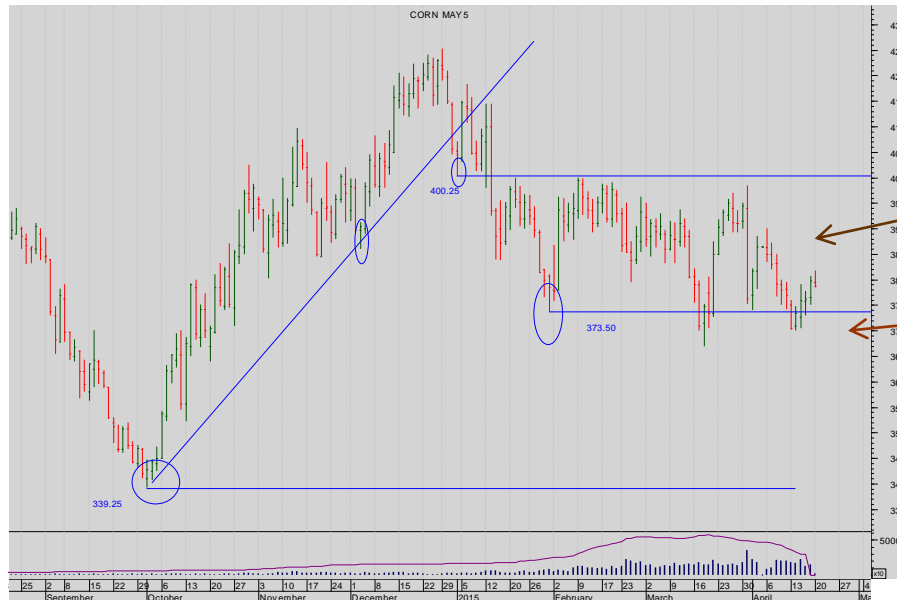
- + Corn
- + Rapeseed



Weekly cont. Chart

In greater detail.

The market is working itself lower against the resistance at the successive prior lows.



Daily bar chart May 15 contract

But in the very short-term, prior lows have been restraining.

Sell a confirmed break of 373.50.

NB there was a close beneath before....Wait for a second close.



Summary

SOY

- + Soy Beans
- + Soy Bean Oil
- + Soy Bean Meal

OTHER

- + Corn
- + Rapeseed

OTHER: Rapeseed

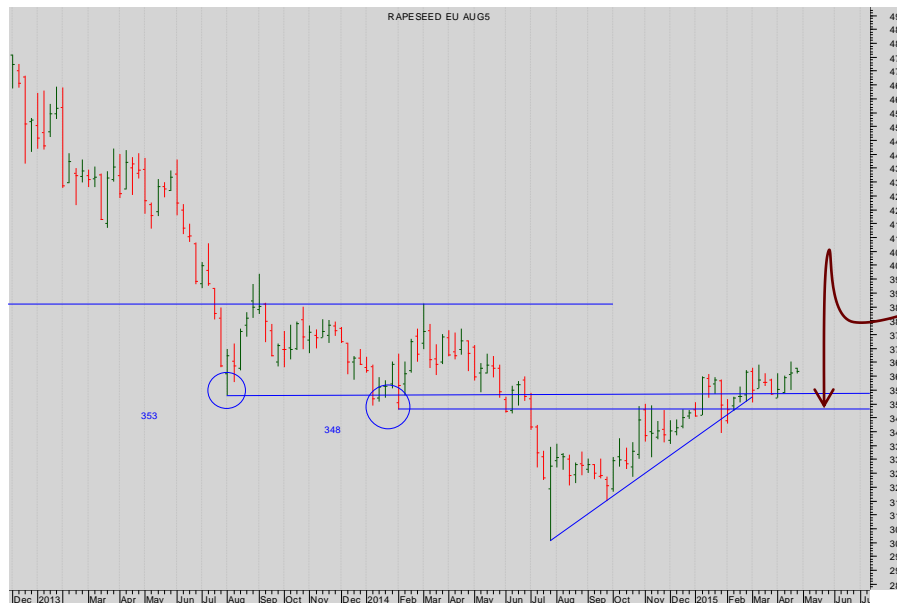


Monthly Chart Continuation:

The third failure above 500 looks bearish for the market.

The initial break beneath 385 sets up the bear scenario ...

But the rally back is disappointing for the bears...



Weekly chart

And this structure lacks clarity.

Stand back.

SO wait for a break beneath the 348 level....

More



OTHER: Rapeseed

Summary

SOY

- + Soy Beans
- + Soy Bean Oil
- + Soy Bean Meal

OTHER

- + Corn
- + Rapeseed



Daily Chart :

This adds another level to watch the rising diagonal support currently at 350 or so.





OTHER: Wheat

Summary

SOY

- + Soy Beans
- + Soy Bean Oil
- + Soy Bean Meal

OTHER

- + Corn
- + Wheat



Monthly Chart Continuation:

The rising diagonal from 2005 is broken.

Look closer



Weekly chart

Note the resilience of the falling diagonal.

But otherwise this lacks clarity.

Wait for a break of the Prior Low 466.



SEVEN DAYS AHEAD

Authorised and Regulated by the FCA

124 REGENTS PARK ROAD LONDON NW18XL

TEL +44 (0) 7849 922573

E-MAIL msturdy@sevendaysahead.com, pallwright@sevendaysahead.com

WEB SITE SEVENDAYS Ahead.COM

The material and information set out in this research is not intended to be a quote of an offer to buy or sell any financial products. Any expression of opinion is based on sources believed to be reasonably reliable but is not guaranteed as to accuracy or completeness.

The material and information herein is general and for informational purposes only. Although Seven Days Ahead endeavours to provide useful information they make no guarantee as to the accuracy or reliability of the research.

The derivative market comprises volatility and considerable risks. To the maximum extent permitted by law no responsibility or liability can be accepted by Seven Days Ahead, any company or employee within its group for any action taken as a result of the information contained in this presentation. You are requested not to rely on any representation in this research and to seek specific advice from your accountant, legal adviser or financial services adviser when dealing with specific circumstances.

Seven Days Ahead is regulated by the UK Financial Conduct Authority.

[Back to main menu](#)