



17th November 2015

the technical analyst

AWARDS 2012

FINALIST BEST COMMODITY, ENERGY & POWER
RESEARCH & STRATEGY

Summary

SOY

- + Soy Bean
- + Soy Bean Oil
- + Soy Bean Meal

OTHER

- + Corn
- + Rapeseed



Soy and Grains Technical Analysis

Mark Sturdy

Disclaimer

Authorised and regulated
by the FCA



Summary

SOY Markets : *Last week* The bears remain in charge short, medium and long-term in the beans. Oil is more reluctant on the bear tack – but the Meal looks very good to sell.

This week: We are dedicated bears in the Beans and the Oil in all time frames. We are close to being bears in the Meal.

Summary

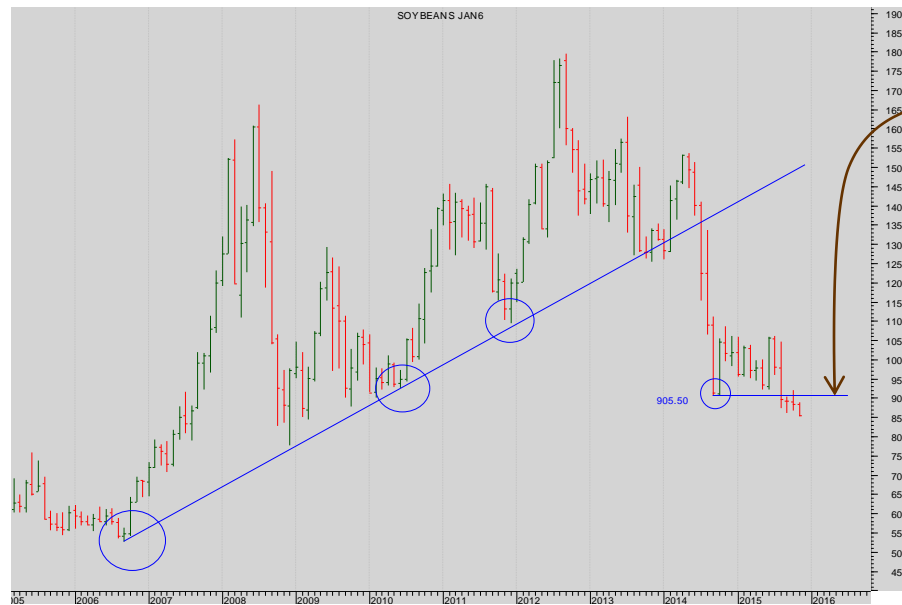
SOY

- + Soy Bean
- + Soy Bean Oil
- + Soy Bean Meal

OTHER

- + Corn
- + Rapeseed

SOY: Soy Bean



Monthly Chart continuation:

The bear continuation triangle remains completed and is set to drive the market further down still.



SOY: Soy Bean

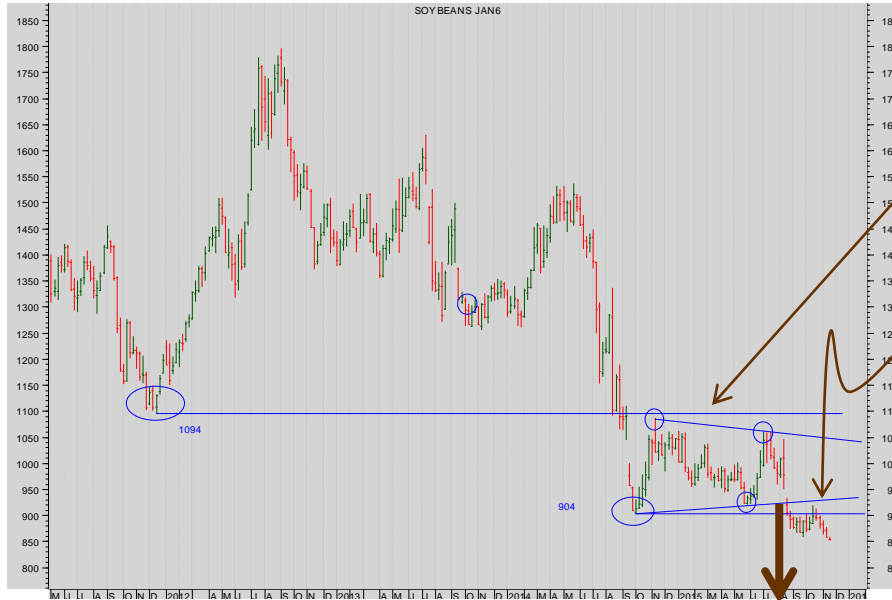
Summary

SOY

- + Soy Bean
- + Soy Bean Oil
- + Soy Bean Meal

OTHER

- + Corn
- + Rapeseed



Weekly Chart – Continuation:

The resistance at the prior Low 1094 has held.

The resistance at the lower diagonal of the Triangle has held.

The bears are emboldened

Minimum target for the Triangle?
About 750.



Daily Chart Jan 16 :

We said: **sell on a break of the raising diagonal.**

If too cautious, sell on a break of 858.25.



SOY: Soy Bean Oil

Summary

SOY

- + Soy Bean
- + Soy Bean Oil
- + Soy Bean Meal

OTHER

- + Corn
- + Rapeseed



Monthly Chart Continuation:

Now the long-term bears should wait for a confirmed break of the 28.16 level to sell...

Look closer.



Weekly Chart – Continuation:

We thought the break (beneath 29.56) was especially exciting.

Now the rally (short-term) has failed.

We are sellers with stops above 29.56.

And fresh selling on a confirmed push (say a monthly close) beneath 28.16.

More



SOY: Soy Bean Oil

Summary

SOY

- + Soy Bean
- + Soy Bean Oil
- + Soy Bean Meal

OTHER

- + Corn
- + Rapeseed



Daily Jan 16 Chart

The rally back to test the resistance 29.32 failed completing a bear flag continuation pattern.

The bears remain in charge.

Sell again or, for the first time, sell on a break down beneath the rising diagonal of the completed bear flag.

Stops above 28.0.



SOY: Soy Bean Meal

Summary

SOY

- + Soy Bean
- + Soy Bean Oil
- + Soy Bean Meal

OTHER

- + Corn
- + Rapeseed



Monthly Chart Continuation:

The market may have failed there again. But there's no breakdown yet...

Look closer for a breakdown through the prior lows round 295 in particular the month end close.



Weekly Chart – continuation:

The first powerful resistance at 385 looks to have turned the market again

Some sellers will be tempted.

Others, perhaps wiser, will wait for the clear break down through 302.

The bears look in control.

More



SOY: Soy Bean Meal

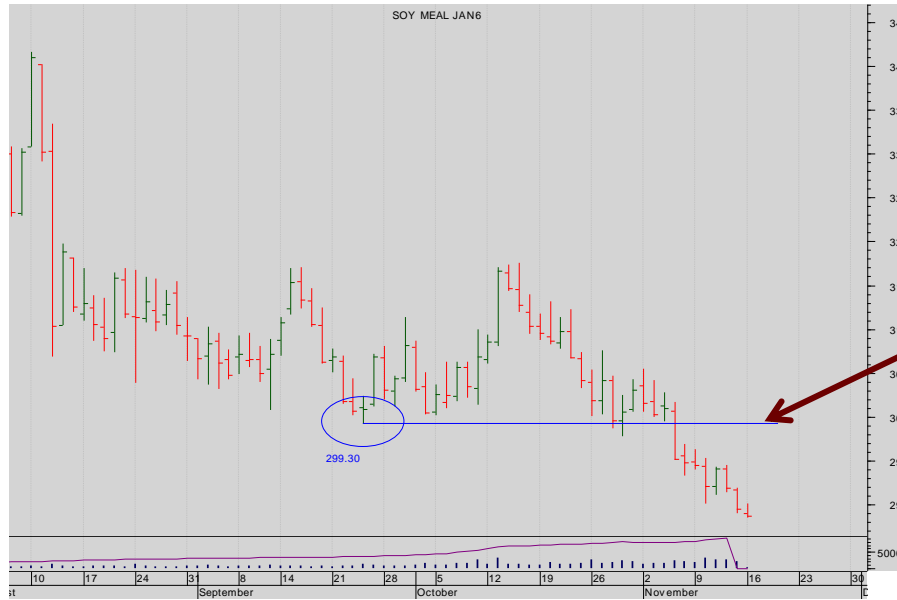
Summary

SOY

- + Soy Bean
- + Soy Bean Oil
- + Soy Bean Meal

OTHER

- + Corn
- + Rapeseed



Daily Chart Jan 15

Here we are short-term sellers beneath 299.30.



Summary

CORN and RAPESEED and WHEAT: *Last week* : Stand aside and wait for more compelling patterns. *The Wheat is still impressively underpinned in the medium and long term and so tradable for bulls with long stops.* **This week:** Corn has been clarified by a clear breakdown in all time frames. Note too the failed rallies in the rapeseed. Wheat is least bearish because best underpinned.

Summary

SOY

- + Soy Bean
- + Soy Bean Oil
- + Soy Bean Meal

OTHER

- + Corn
- + Rapeseed

OTHER : Corn



Monthly Cont. Chart

The quadruple failure at the 800 level (having tested above it and been unable to sustain that break) was ominous for the bulls.

The break of the rising trendline support is clear.

So too is the resistance now above the market at the Prior Low at 406.25

Look closer.

More



Summary

SOY

- + Soy Bean
- + Soy Bean Oil
- + Soy Bean Meal

OTHER

- + Corn
- + Rapeseed

OTHER : Corn



Weekly cont. Chart

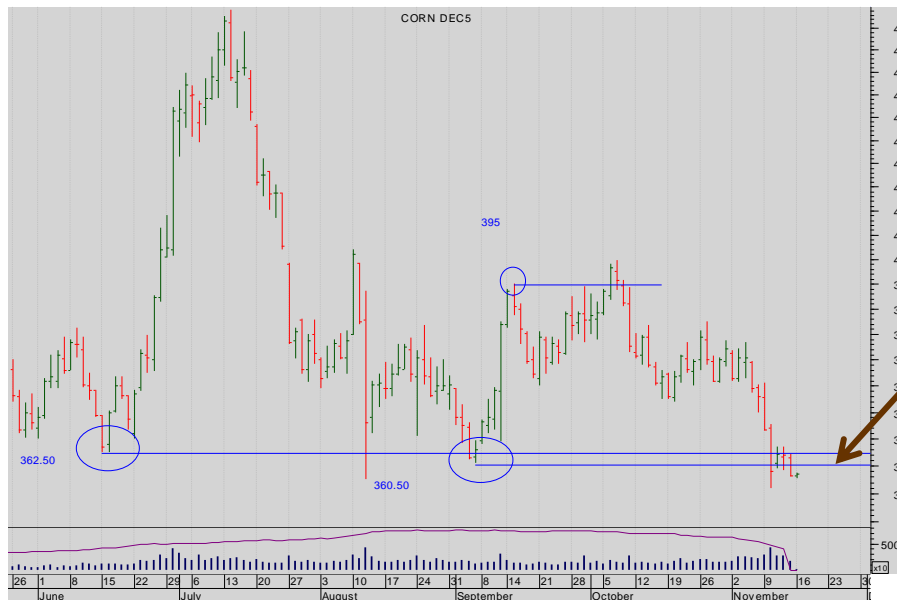
In greater detail. A parallel channel has emerged

The market has failed twice at the 421 prior low.

The bears need to see a break beneath this diagonal.

or, more cautiously, a break beneath 346.75.

Daily bar chart Dec 15 contract



But this is more compelling still – the breakdown from a long-established trading range.

Sell on a confirmed break down through 360.50 with stops above 362.50.



OTHER: Rapeseed

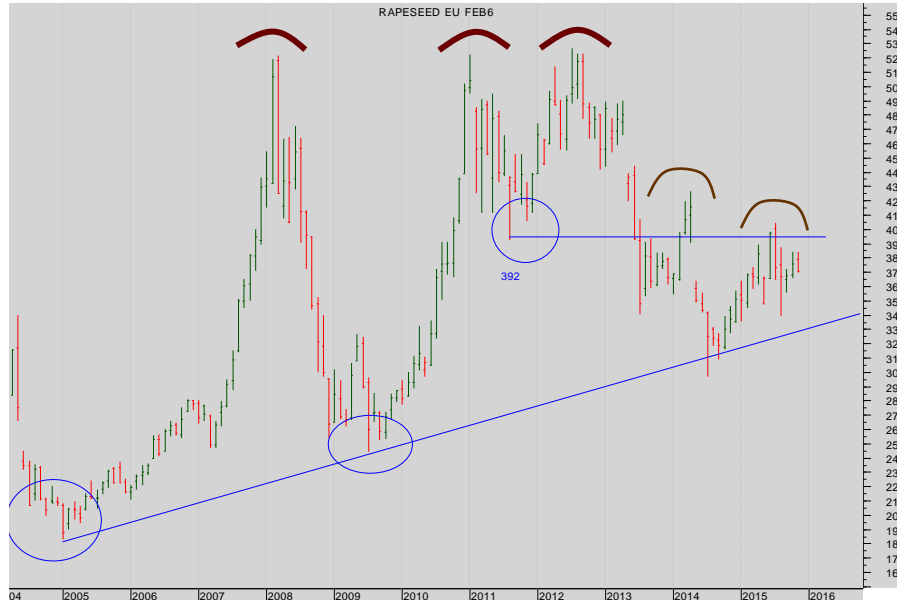
Summary

SOY

- + Soy Beans
- + Soy Bean Oil
- + Soy Bean Meal

OTHER

- + Corn
- + Rapeseed



Monthly Chart Continuation:

The third failure above 500 looked bearish for the market.

The initial break beneath 392/405 set up the bear scenario ...

Note the two failed rallies (at resistance 392) now is that a selling opportunity?

Look closer.



Weekly chart

The detail of the rally back – reveals that this is the third attempt (at least) to break up through 392.

Sell into a failure....

But perhaps a break of the rising diagonal would be the critical failure.

More



OTHER: Rapeseed

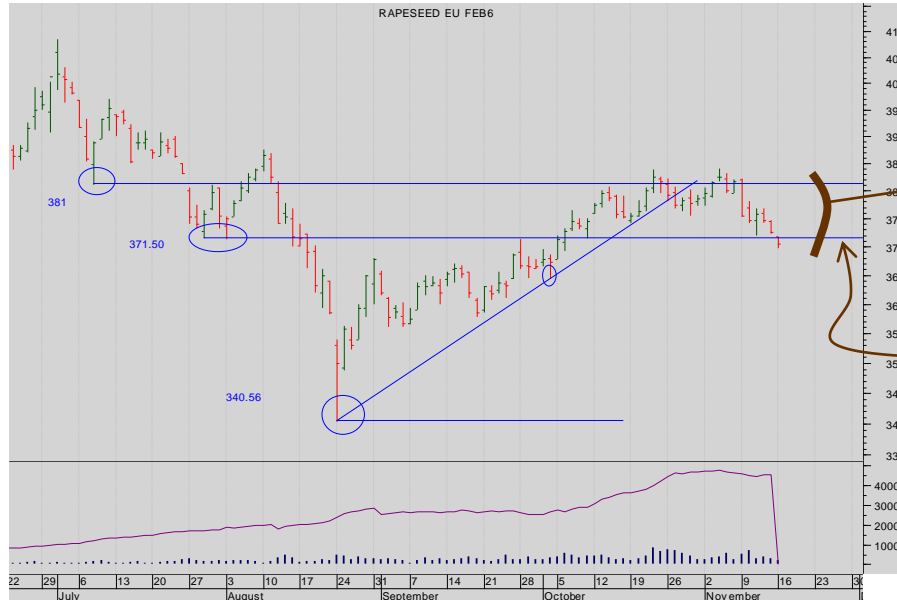
Summary

SOY

- + Soy Beans
- + Soy Bean Oil
- + Soy Bean Meal

OTHER

- + Corn
- + Rapeseed



Daily Feb 16 Chart :

But watch this in the short-term.

Note the reaction to the resistance at 371/381.

Bears (as we are) should in the first place wait for a break beneath the band 381/371.50.



Summary

SOY

- + Soy Beans
- + Soy Bean Oil
- + Soy Bean Meal

OTHER

- + Corn
- + Wheat

OTHER: Wheat



Monthly Chart Continuation:

The market has repeatedly bounced off the critical support of 434.

Look closer



Weekly chart

And, moreover, it is hesitant to break beneath 466.



Summary

SOY

- + Soy Beans
- + Soy Bean Oil
- + Soy Bean Meal

OTHER

- + Corn
- + Wheat

OTHER: Wheat



Daily Dec15 futures Chart:

This is the detail of the Dec contract – impressive strength shown when driving up through the band of resistance 485/493

The short-term pull-back has to be set against the long-term supports in the weekly and monthly charts.



SEVEN DAYS AHEAD

Authorised and Regulated by the FCA
124 REGENTS PARK ROAD LONDON NW18XL
TEL +44 (0) 7849 922573
E-MAIL msturdy@sevendaysahead.com,
WEB SITE SEVENDAYS Ahead.COM

The material and information set out in this research is not intended to be a quote of an offer to buy or sell any financial products. Any expression of opinion is based on sources believed to be reasonably reliable but is not guaranteed as to accuracy or completeness.

The material and information herein is general and for informational purposes only. Although Seven Days Ahead endeavours to provide useful information they make no guarantee as to the accuracy or reliability of the research.

The derivative market comprises volatility and considerable risks. To the maximum extent permitted by law no responsibility or liability can be accepted by Seven Days Ahead, any company or employee within its group for any action taken as a result of the information contained in this presentation. You are requested not to rely on any representation in this research and to seek specific advice from your accountant, legal adviser or financial services adviser when dealing with specific circumstances.

Seven Days Ahead is regulated by the UK Financial Conduct Authority.

[Back to main menu](#)