



the technical analyst

AWARDS 2012

FINALIST BEST INDEPENDENT RESEARCH HOUSE

Summary

Currencies

- + Dollar Euro
- + Dollar Sterling
- + Dollar Yen
- + Sterling Euro

Stocks

- + S&P 500
- + EuroStoxx 50
- + FTSE 100
- + Nikkei 225

Bonds

- + Ten Year US TNote
- + Ten Year German Bund
- + UK Gilt

Commodities

- + Oil
- + Gold

IMPLIED ASSET ALLOCATION

Disclaimer



Multi-asset technical strategies

Week of 18th September 2018

Mark Sturdy

Authorised and regulated
by the FSA



summary

Very powerful signals arise when the charts of any one asset are aligned in all three time frames - see highlights

Summary

Currencies

- + Dollar Euro
- + Dollar Sterling
- + Dollar Yen
- + Sterling Euro

Long-term BEAR Euro	Medium-term BEAR Euro	Short-term BEAR Euro
Long-term BEAR Sterling	Medium-term BEAR Sterling	Short-term BEAR Sterling
Long-term BEAR Yen	Medium-term BEAR Yen	Short-term FLAT Yen
Long-term BULL Euro	Medium-term BULL Euro	Short-term BULL Euro

Stocks

- + S&P 500
- + EuroStoxx 50
- + FTSE 100
- + Nikkei 225

Long-term BULL	Medium-term BULL	Short-term BULL
Long-term BEAR	Medium-term BEAR	Short-term FLAT
Long-term BULL	Medium-term BEAR	Short-term FLAT
Long-term BULL	Medium-term BULL	Short-term FLAT

Bonds

- + Ten Year US TNote
- + Ten Year German Bund
- + UK Gilt

Long-term BEAR	Medium-term BEAR	Short-term BEAR
Long-term BULL	Medium-term BULL	Short-term FLAT
Long-term BEAR	Medium-term BEAR	Short-term FLAT

Commodities

- + Oil
- + Gold

Long-term BULL	Medium-term BULL	Short-term FLAT
Long-term BEAR	Medium-term BEAR	Short-term BEAR

IMPLIED ASSET ALLOCATION

More



Currencies: Dollar Euro

CURRENCIES:

It's no longer clear what the structure of the Dollar Euro chart is. The Dollar Sterling chart remains ominous for Sterling despite the short-term rally from 1.27 to 1.31. The newest piece of solid chart evidence in the currencies is the completion of a Reverse H&S pattern, very short term, in the Dollar Yen suggesting further Yen weakness.

Summary

Currencies

- + Dollar Euro
- + Dollar Sterling
- + Dollar Yen
- + Sterling Euro

Stocks

- + S&P 500
- + EuroStoxx 50
- + FTSE 100
- + Nikkei 225

Bonds

- + Ten Year US TNote
- + Ten Year German Bund
- + UK Gilt

Commodities

- + Oil
- + Gold

IMPLIED ASSET ALLOCATION



Dollar Euro monthly spot cash chart

These powerful resistances above the market at 1.15 and above **looks to have been reversed or at least halted** the bear Dollar/bull Euro market ...

The pressure is on the Euro now.

More



Summary

Currencies

- + Dollar Euro
- + Dollar Sterling
- + Dollar Yen
- + Sterling Euro

Stocks

- + S&P 500
- + EuroStoxx 50
- + FTSE 100
- + Nikkei 225

Bonds

- + Ten Year US TNote
- + Ten Year German Bund
- + UK Gilt

Commodities

- + Oil
- + Gold

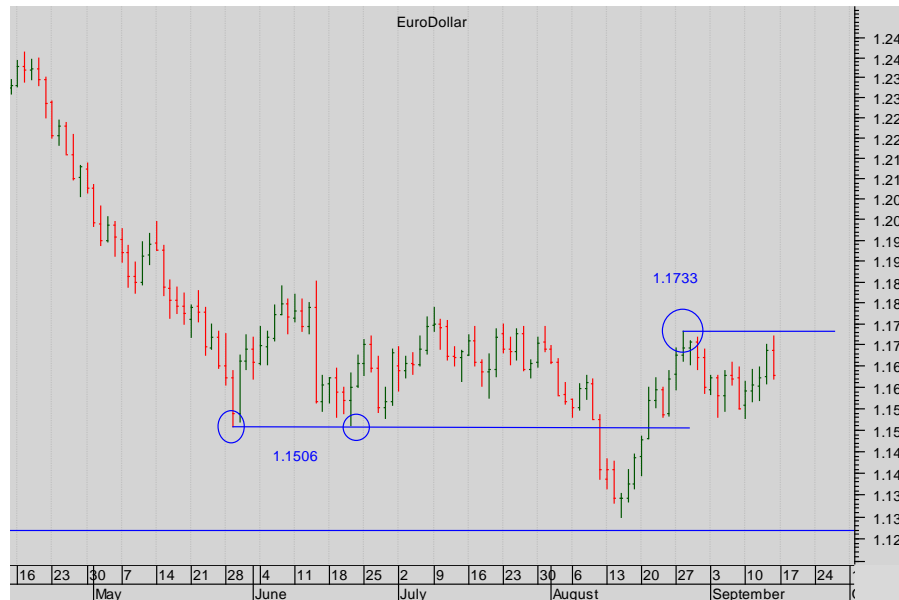
IMPLIED ASSET ALLOCATION

Currencies: Dollar Euro



Dollar Euro weekly spot cash chart

The market is dithering.
Stand back for clarity!



Dollar Euro spot cash chart daily chart...

The rally back has taken the market back into a trading range....

Stand back for clarity.



Currencies: Dollar Sterling

Summary

Currencies

- + Dollar Euro
- + Dollar Sterling
- + Dollar Yen
- + Sterling Euro

Stocks

- + S&P 500
- + EuroStoxx 50
- + FTSE 100
- + Nikkei 225

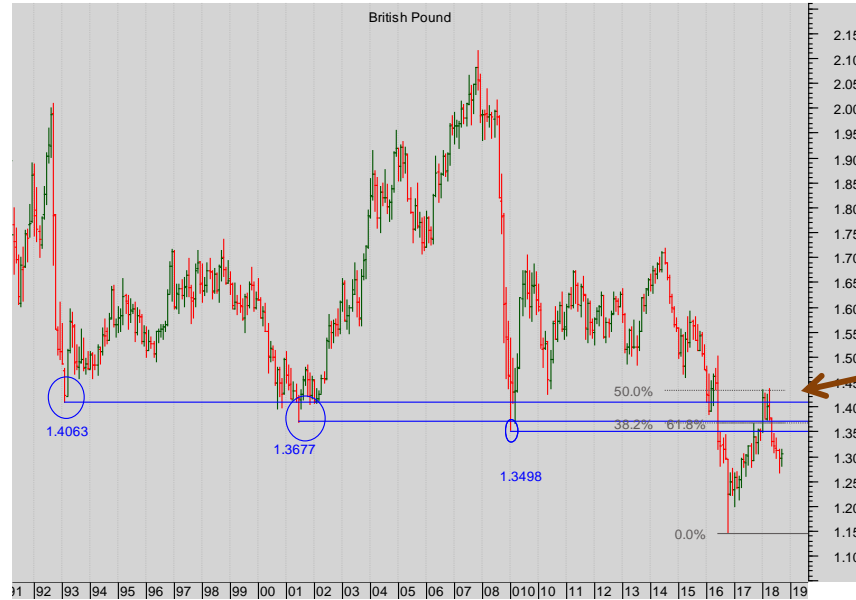
Bonds

- + Ten Year US TNote
- + Ten Year German Bund
- + UK Gilt

Commodities

- + Oil
- + Gold

IMPLIED ASSET ALLOCATION

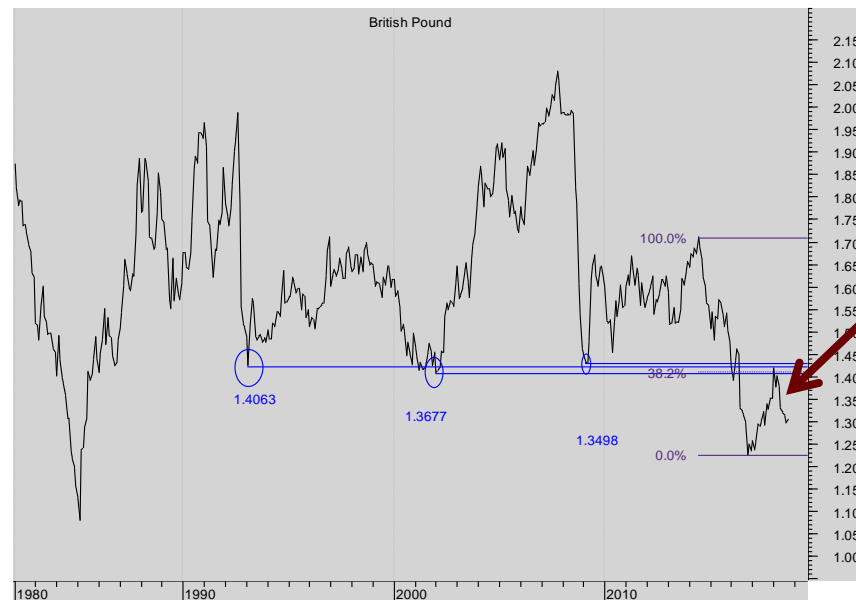


Dollar Sterling Monthly spot cash chart

All the Prior Pivotal lows of 1993, 2001, 2008 and 2016 have acted as good resistance. A massive Multiple Top has formed.

The market rallied back deep into the band of resistance as far as the 50% Fibonacci resistance – **but failed there.**

Look more closely.



Dollar Sterling Monthly spot cash LINE CHART based on closes

Note here the repeated testing of the resistance band formed from low closes.

It's a clear failure...

Look more closely still...

More



Summary

Currencies

- + Dollar Euro
- + Dollar Sterling
- + Dollar Yen
- + Sterling Euro

Stocks

- + S&P 500
- + EuroStoxx 50
- + FTSE 100
- + Nikkei 225

Bonds

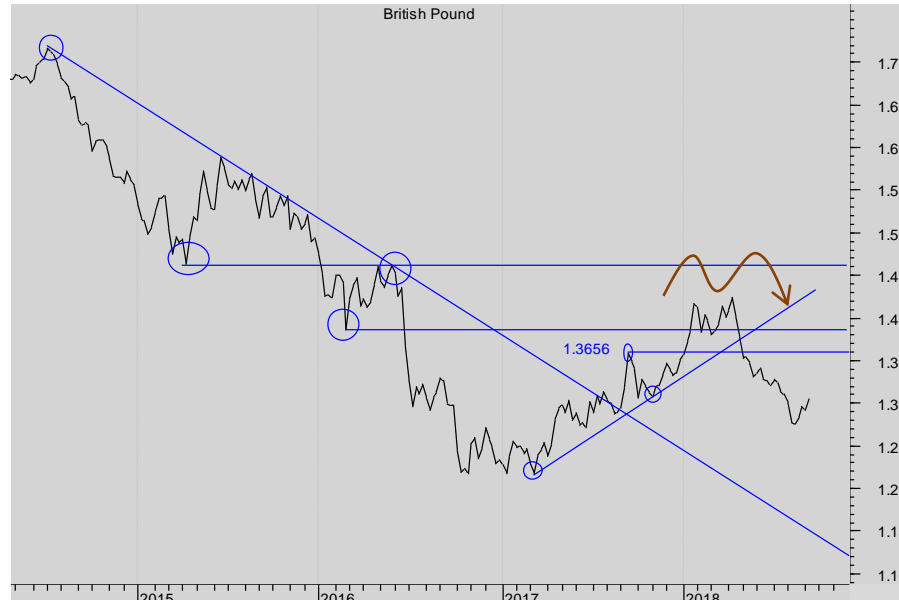
- + Ten Year US TNote
- + Ten Year German Bund
- + UK Gilt

Commodities

- + Oil
- + Gold

IMPLIED ASSET ALLOCATION

Currencies: Dollar Sterling



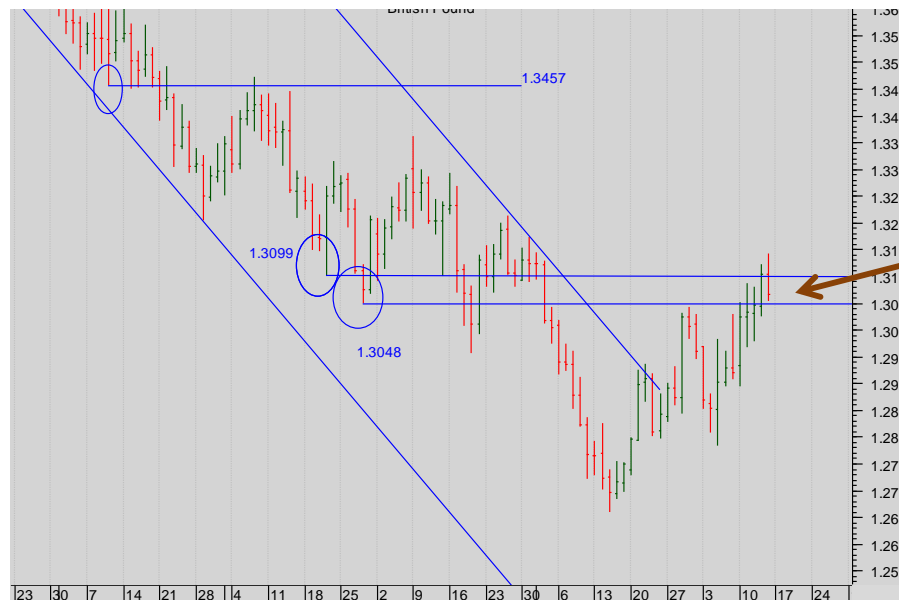
Dollar Sterling weekly spot cash chart

The **Double Top** at the recent high is interesting BUT:

the break of both the Prior High and diagonal support (and a coincident Fibonacci support) from 1.3656 was a clear sell signal for Sterling.

The bull trend of the last 19 months has broken down.

Some support off the diagonal?



Dollar Sterling daily spot cash chart

Watch the resistance at the band beginning at 1.304.

Only if that breaks will the Sterling bulls get excited.



Currencies: Dollar Yen

Summary

Currencies

- + Dollar Euro
- + Dollar Sterling
- + Dollar Yen
- + Sterling Euro

Stocks

- + S&P 500
- + EuroStoxx 50
- + FTSE 100
- + Nikkei 225

Bonds

- + Ten Year US TNote
- + Ten Year German Bund
- + UK Gilt

Commodities

- + Oil
- + Gold

IMPLIED ASSET ALLOCATION



Dollar Yen monthly spot cash chart

Note the well-formed downtrend resistance that is being challenged right now.

No clear break yet.



Dollar Yen weekly spot cash chart

The market is dithering at the diagonal.

Stand back.





Summary

Currencies

- + Dollar Euro
- + Dollar Sterling
- + Dollar Yen
- + Sterling Euro

Stocks

- + S&P 500
- + EuroStoxx 50
- + FTSE 100
- + Nikkei 225

Bonds

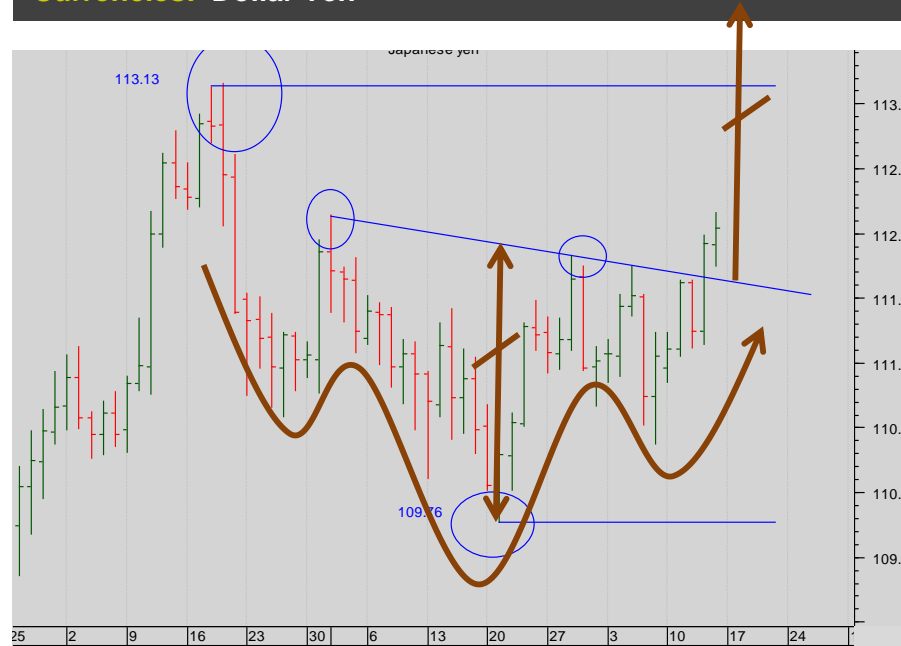
- + Ten Year US TNote
- + Ten Year German Bund
- + UK Gilt

Commodities

- + Oil
- + Gold

IMPLIED ASSET ALLOCATION

Currencies: Dollar Yen



Dollar Yen daily spot cash chart

This is clearer. The H&S reversal pattern has completed.

Minimum move?
Up as far as 113.50.



Currencies: Sterling Euro

Summary

Currencies

- + Dollar Euro
- + Dollar Sterling
- + Dollar Yen
- + Sterling Euro

Stocks

- + S&P 500
- + EuroStoxx 50
- + FTSE 100
- + Nikkei 225

Bonds

- + Ten Year US TNote
- + Ten Year German Bund
- + UK Gilt

Commodities

- + Oil
- + Gold

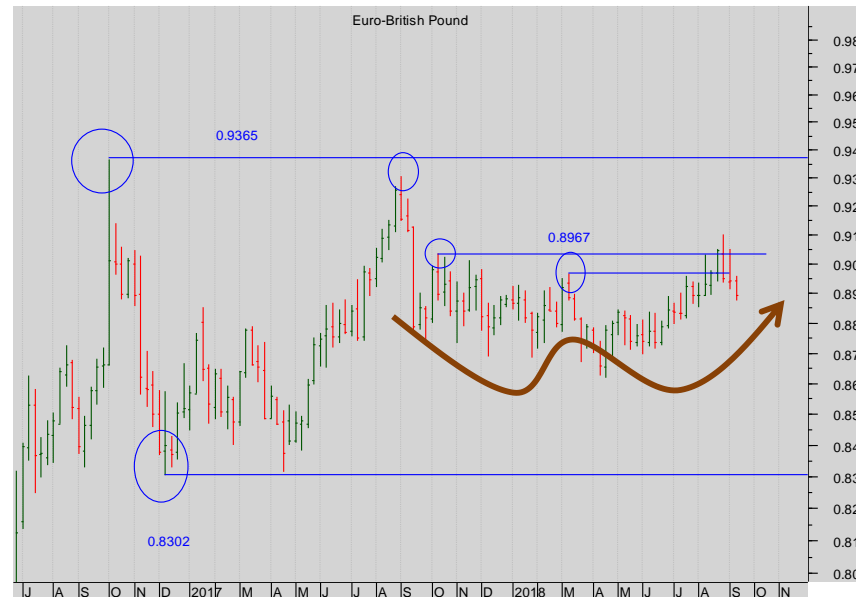
IMPLIED ASSET ALLOCATION



Sterling Euro monthly spot cash chart

The last four months' volatility has created a wide trading triangle.

But there is no breakout likely near-term.



Sterling Euro weekly spot cash chart

This might yet be Double Bottom..

The target for a break up through 0.8967?

About 0.9365

But wait for the completion...

More



Currencies: Sterling Euro



Sterling Euro daily spot cash chart

The sharp retracement back through the horizontal supports has thrown the structure into confusion.

Stand back.

Summary

Currencies

- + Dollar Euro
- + Dollar Sterling
- + Dollar Yen
- + **Sterling Euro**

Stocks

- + S&P 500
- + EuroStoxx 50
- + FTSE 100
- + Nikkei 225

Bonds

- + Ten Year US TNote
- + Ten Year German Bund
- + UK Gilt

Commodities

- + Oil
- + Gold

IMPLIED ASSET ALLOCATION



Stocks

STOCKS: The S&P is the lead bull market, or more correctly the only bull market! Forging through prior short term highs it looks like another short-term bull leg is in the offing. Elsewhere market looks lacklustre. Watch in particular the rally to important resistance in the EuroStoxx .The FTSE, it should be noted has failed to rally at all. Equally the Nikkei is very close to the top of a trading range. So there is considerable divergence and useful structures abound.

Summary

Currencies

- + Dollar Euro
- + Dollar Sterling
- + Dollar Yen
- + Sterling Euro

Stocks

- + S&P 500
- + EuroStoxx 50
- + FTSE 100
- + Nikkei 225

Bonds

- + Ten Year US TNote
- + Ten Year German Bund
- + UK Gilt

Commodities

- + Oil
- + Gold

IMPLIED ASSET ALLOCATION

Stocks: CME S&P



CME S&P 500 monthly cont. futures chart

The bulls remain firmly in control.

Look closer.

More



Stocks: CME S&P 500

Summary

Currencies

- + Dollar Euro
- + Dollar Sterling
- + Dollar Yen
- + Sterling Euro

Stocks

- + S&P 500
- + EuroStoxx 50
- + FTSE 100
- + Nikkei 225

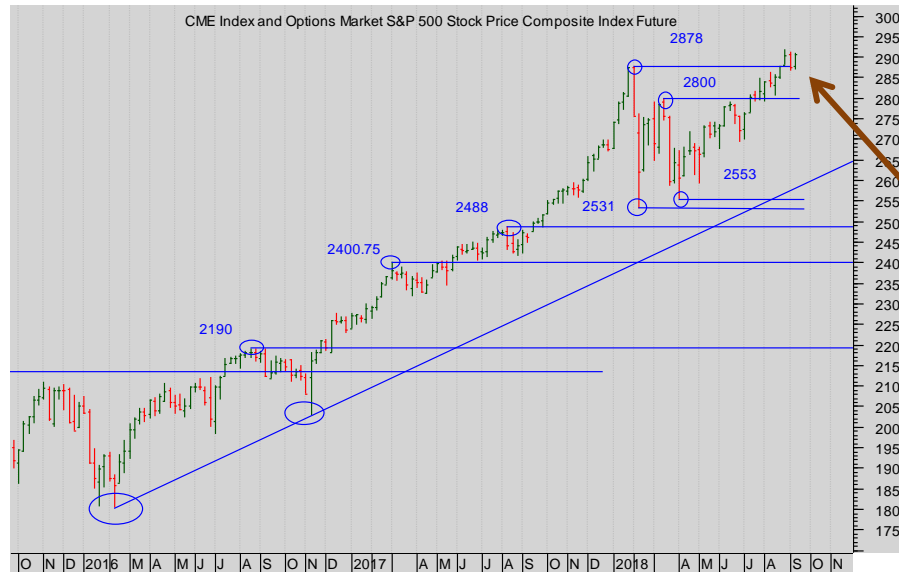
Bonds

- + Ten Year US TNote
- + Ten Year German Bund
- + UK Gilt

Commodities

- + Oil
- + Gold

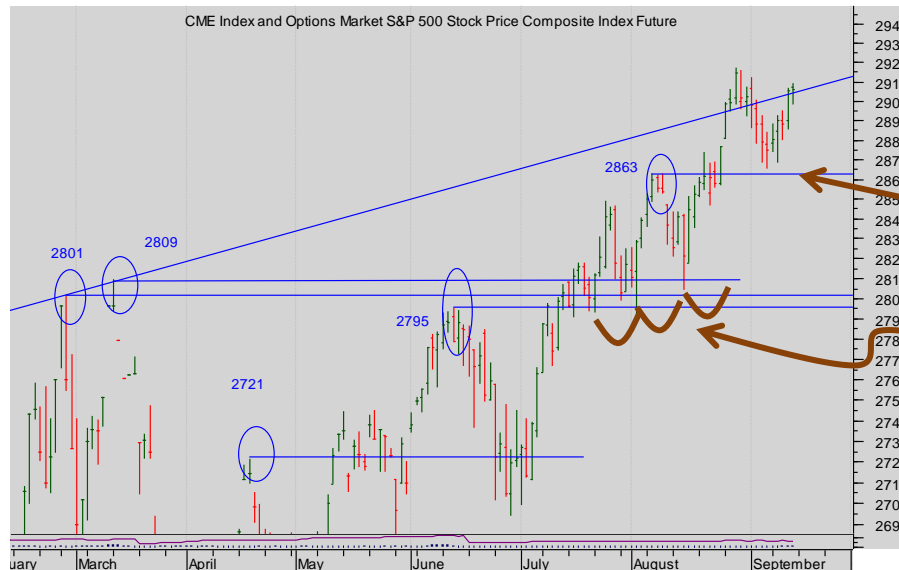
IMPLIED ASSET ALLOCATION



CME S&P 500 cont weekly cont. chart

The bulls needed the market to break above 2878 to reassure them that the market is in good fettle.

Looks to be beginning the next bull leg up...



CME S&P 500 daily Sept 2018 chart

The smash through the short-term Prior High of 2863 was the catalyst for more buying still. **Now it is essential support.**

Anxious bulls were reassured by the solidity of the 2809 support in the Sept 2018 contract.

More



Stocks: Eurex EuroStoxx 50

Summary

Currencies

- + Dollar Euro
- + Dollar Sterling
- + Dollar Yen
- + Sterling Euro

Stocks

- + S&P 500
- + EuroStoxx 50
- + FTSE 100
- + Nikkei 225

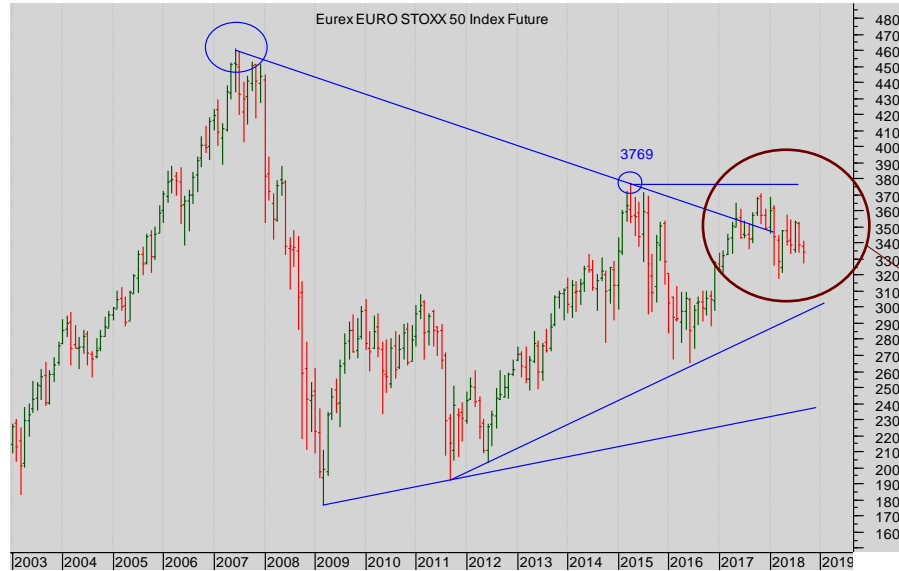
Bonds

- + Ten Year US TNote
- + Ten Year German Bund
- + UK Gilt

Commodities

- + Oil
- + Gold

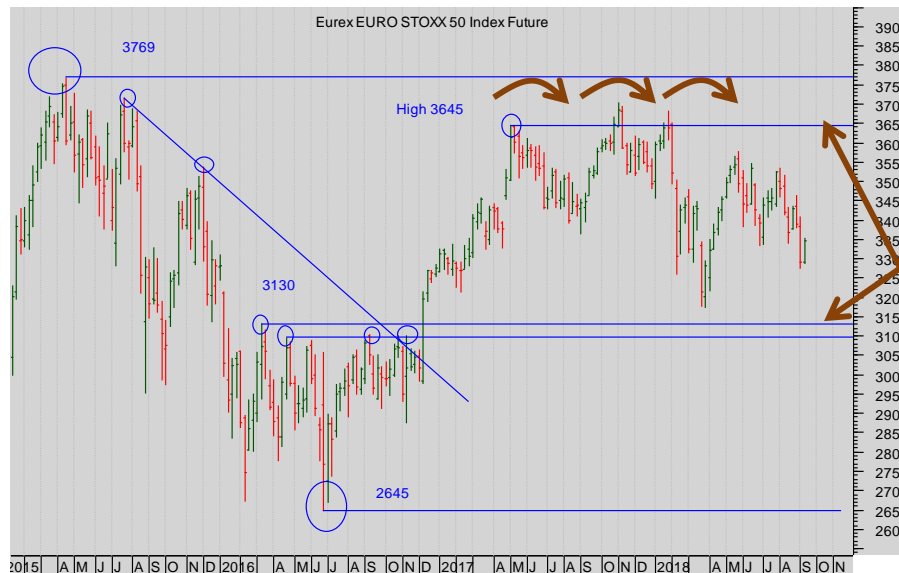
IMPLIED ASSET ALLOCATION



Eurex EuroStoxx 50 monthly continuation futures chart

The long-term condition of the market is not clear:

The market has failed to push through the old 3769 High and remains looking vulnerable.



Eurex EuroStoxx 50 weekly continuation futures chart

Altogether **this isn't clear.**

The market needs to break beneath the support from the Prior Highs at 3100 to convince the bears that the market has failed and wants to go lower.

Equally, the failure to break above the successive prior highs 3645 looks vulnerable.

More



Stocks: Eurex EuroStoxx 50

Summary

Currencies

- + Dollar Euro
- + Dollar Sterling
- + Dollar Yen
- + Sterling Euro

Stocks

- + S&P 500
- + EuroStoxx 50
- + FTSE 100
- + Nikkei 225

Bonds

- + Ten Year US TNote
- + Ten Year German Bund
- + UK Gilt

Commodities

- + Oil
- + Gold

IMPLIED ASSET ALLOCATION



Eurex EuroStoxx 50 daily Sep 18 futures chart

The band of support from the Prior Highs at 3350 has broken and so a multiple top has formed.

The bears are in charge now, there is powerful resistance above the market: 3330-3336.

The rally back is testing that resistance: watch it carefully for any signs of failure.



Stocks: Liffe FTSE 100

Summary

Currencies

- + Dollar Euro
- + Dollar Sterling
- + Dollar Yen
- + Sterling Euro

Stocks

- + S&P 500
- + EuroStoxx 50
- + **FTSE 100**
- + Nikkei 225

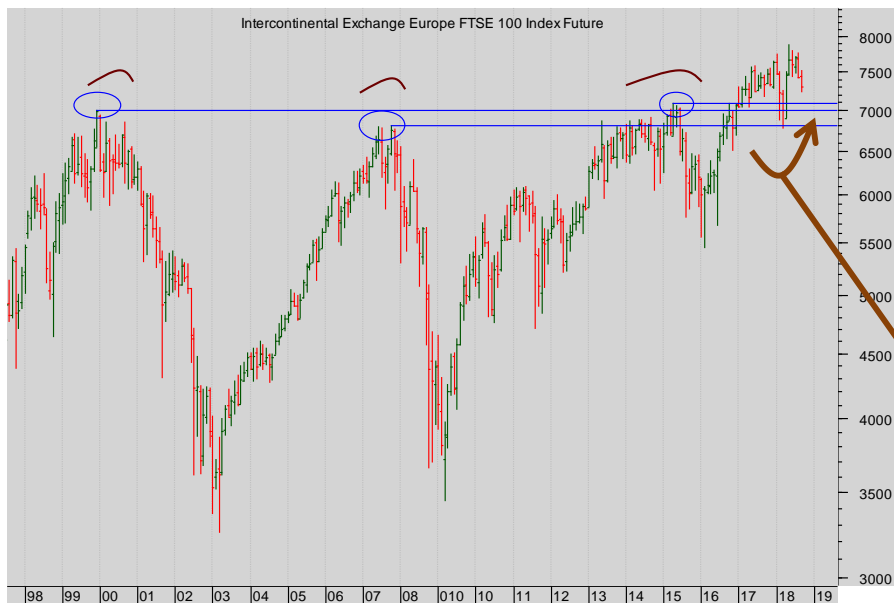
Bonds

- + Ten Year US TNote
- + Ten Year German Bund
- + UK Gilt

Commodities

- + Oil
- + Gold

IMPLIED ASSET ALLOCATION



Liffe FTSE 100 Monthly continuation futures chart

The succession of Prior Highs (6796, 6995) has been overcome, so the market remains **underpinned** in a very powerfully bullish way.

Note that the one retest of that support led to a rapid bounce.



Liffe FTSE 100 Weekly cont. futures chart

The retest and bounce from the successive levels of support from 6800 to 7100 looks **very spirited** – can the market convincingly break 7745?

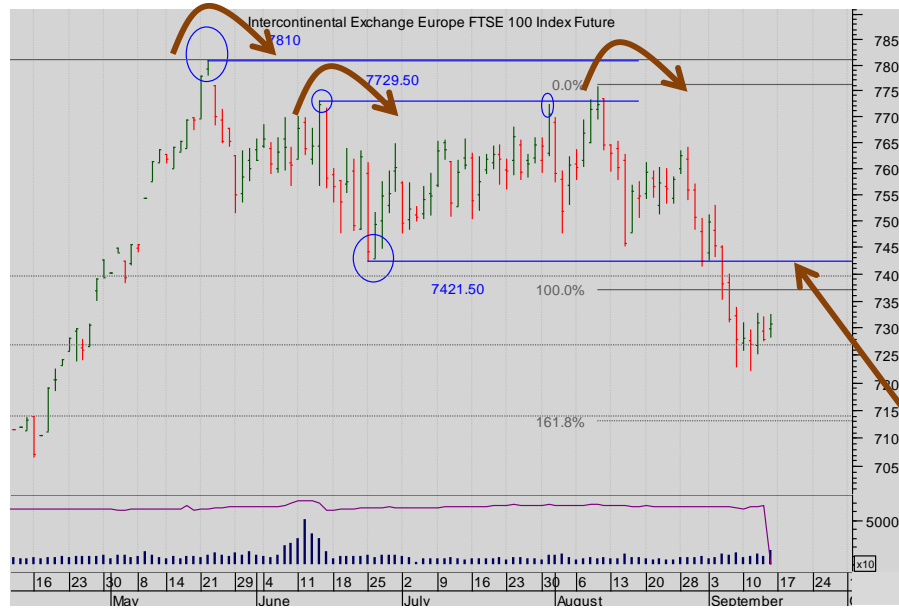
We thought it looked vulnerable and so it proved.

A retest of the multiple support around 7000 is likely.

More



Stocks: Liffe FTSE 100



Liffe FTSE 100 Jun18 daily futures chart

We thought that the third failure at the 7800 level looked anxious-making and so it has proved

The break beneath 7421 has completed a multiple top.

Expect powerful resistance at the Prior low 7421 if the market tries to rally!

Summary

Currencies

- + Dollar Euro
- + Dollar Sterling
- + Dollar Yen
- + Sterling Euro

Stocks

- + S&P 500
- + EuroStoxx 50
- + FTSE 100
- + Nikkei 225

Bonds

- + Ten Year US TNote
- + Ten Year German Bund
- + UK Gilt

Commodities

- + Oil
- + Gold

IMPLIED ASSET ALLOCATION



Summary

Currencies

- + Dollar Euro
- + Dollar Sterling
- + Dollar Yen
- + Sterling Euro

Stocks

- + S&P 500
- + EuroStoxx 50
- + FTSE 100
- + **Nikkei 225**

Bonds

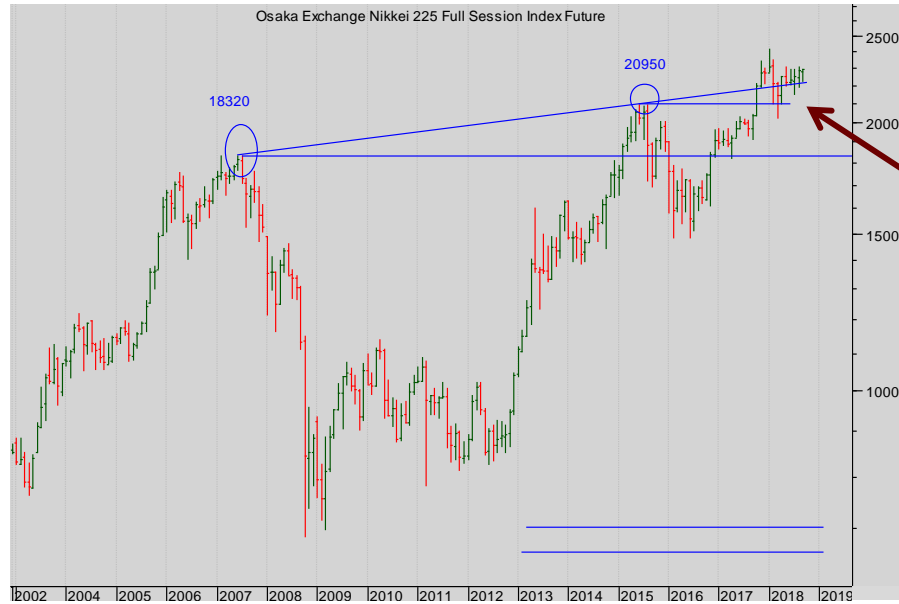
- + Ten Year US TNote
- + Ten Year German Bund
- + UK Gilt

Commodities

- + Oil
- + Gold

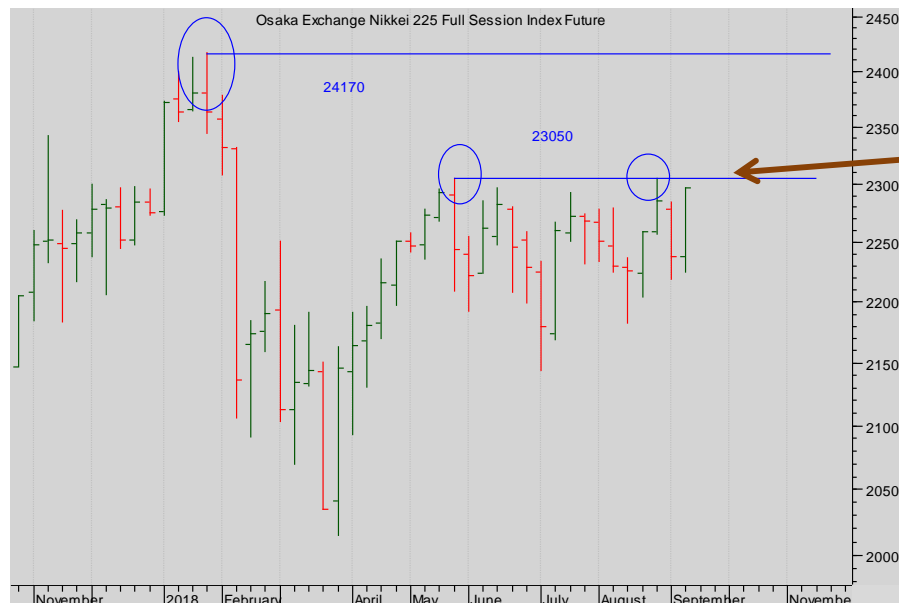
IMPLIED ASSET ALLOCATION

Stocks: OSE Nikkei 225



Nikkei 225 chart (monthly)

The market smashed up through the Prior High 20950 and then, on pulling back, has bounced, confirming the bull sentiment..



Nikkei 225 chart (WEEKLY)

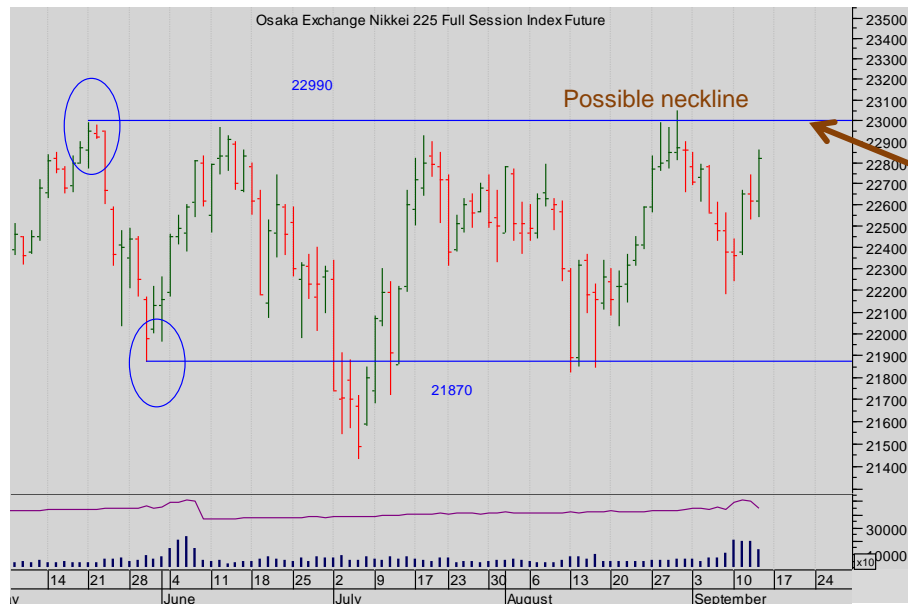
The bulls would be mightily further encouraged by a move up through 23050!

Wait for it...

More



Stocks: OSE Nikkei 225



**Nikkei 225 chart Daily
Sep 18.**

But this isn't clear.
Bulls need a break above
22990.

Wait for it ...

Summary

Currencies

- + Dollar Euro
- + Dollar Sterling
- + Dollar Yen
- + Sterling Euro

Stocks

- + S&P 500
- + EuroStoxx 50
- + FTSE 100
- + Nikkei 225

Bonds

- + Ten Year US TNote
- + Ten Year German Bund
- + UK Gilt

Commodities

- + Oil
- + Gold

IMPLIED ASSET ALLOCATION



Bonds

BONDS: Bonds were sold hard over the week. The most compelling narrative lies with the TNote which is bearish long medium and short-term. Other markets reflected that bearishness without completing compelling bearish structures.

Summary

Currencies

- + Dollar Euro
- + Dollar Sterling
- + Dollar Yen
- + Sterling Euro

Stocks

- + S&P 500
- + EuroStoxx 50
- + FTSE 100
- + Nikkei 225

Bonds

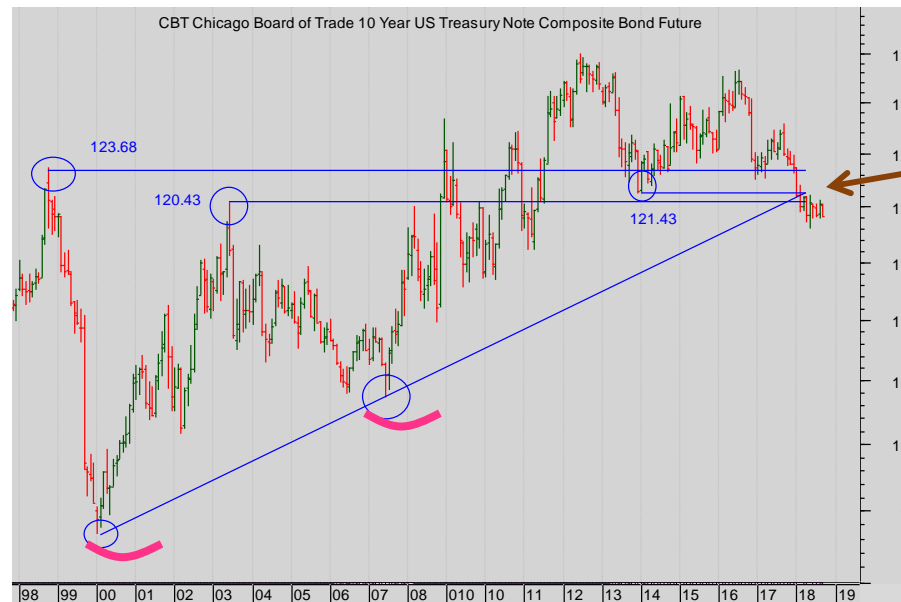
- + Ten Year US TNotes
- + Ten Year German Bund
- + UK Gilt

Commodities

- + Oil
- + Gold

IMPLIED ASSET ALLOCATION

Bonds: CBOT Ten Year Notes



CBOT Ten Year Notes monthly futures continuation chart

The long-standing diagonal trendline support has surely broken?

More



Bonds: CBOT Ten Year Notes

Summary

Currencies

- + Dollar Euro
- + Dollar Sterling
- + Dollar Yen
- + Sterling Euro

Stocks

- + S&P 500
- + EuroStoxx 50
- + FTSE 100
- + Nikkei 225

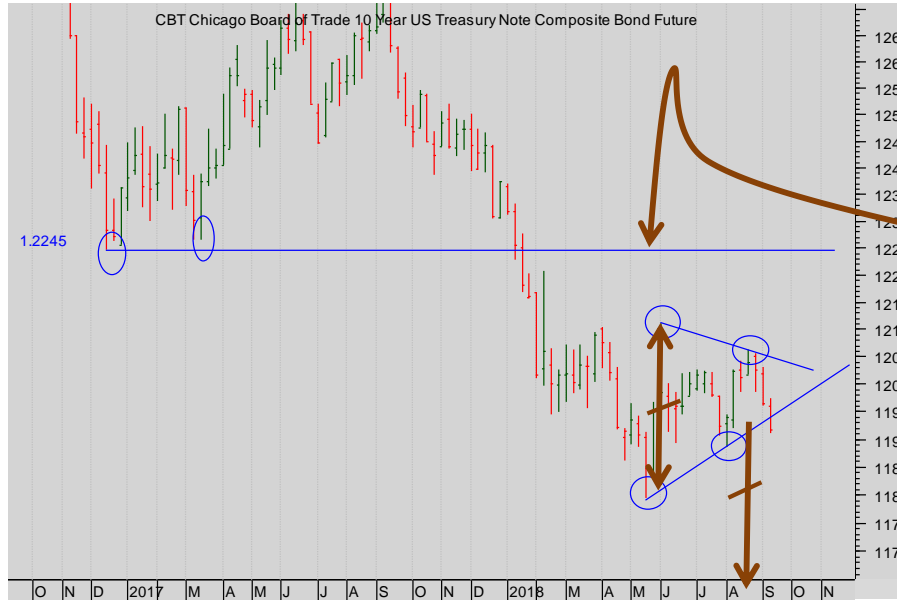
Bonds

- + Ten Year US TNotes
- + Ten Year German Bund
- + UK Gilt

Commodities

- + Oil
- + Gold

IMPLIED ASSET ALLOCATION

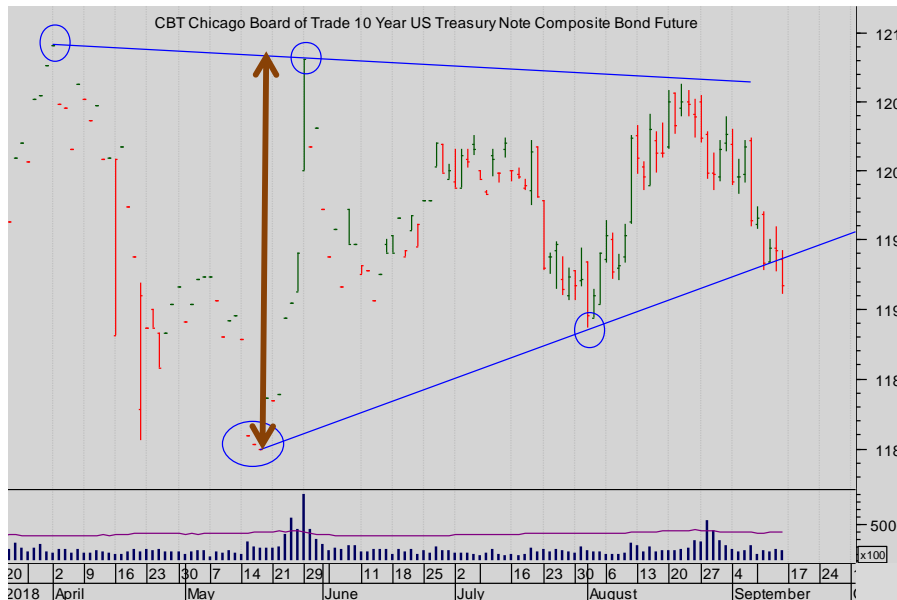


CBOT Ten Year Notes weekly futures continuation chart

Note this breakdown through Prior Lows (the band 121.39/122.45) that will now act as good resistance on any rally.

And now the completion of the bear continuation triangle.

Minimum move? Down as far as 116.50.



CBOT Ten Year Notes daily Sep18 futures chart

A large triangle has broken.

This is bearish. Again, a bear move of four big figures is in the offing.

More



Bonds: Eurex Ten Year Bund

Summary

Currencies

- + Dollar Euro
- + Dollar Sterling
- + Dollar Yen
- + Sterling Euro

Stocks

- + S&P 500
- + EuroStoxx 50
- + FTSE 100
- + Nikkei 225

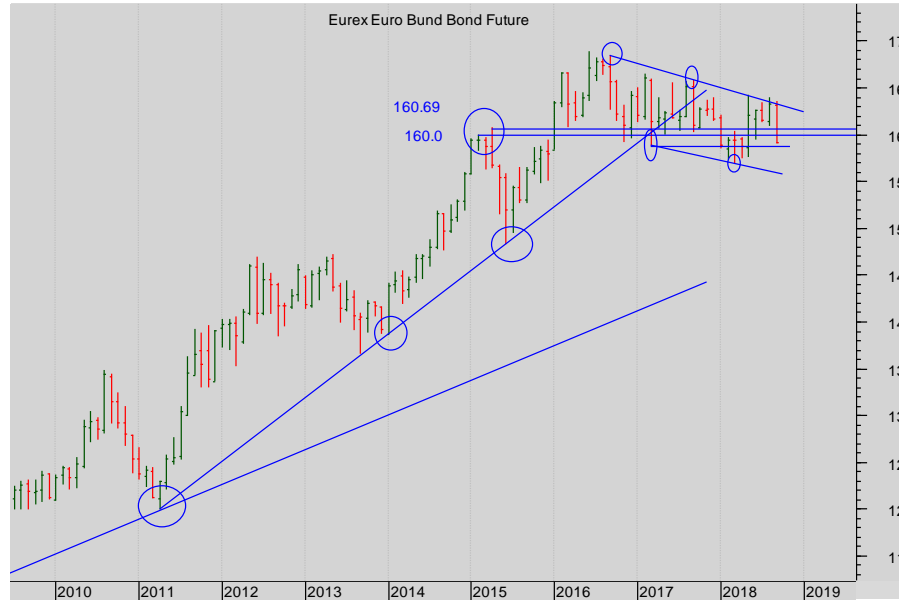
Bonds

- + Ten Year US TNote
- + Ten Year German Bund
- + UK Gilt

Commodities

- + Oil
- + Gold

IMPLIED ASSET ALLOCATION



Eurex Ten Year Bund monthly futures continuation chart

The market has found support at the Prior Highs 160.69/160 and looks set to bounce.

There is also the suspicion of a **bull falling wedge** that is close to completion.



Eurex Ten Year Bund weekly cont. futures Chart

The market has fallen away from the diagonal

Stand Back!





Bonds: Eurex Ten Year Bund

Summary

Currencies

- + Dollar Euro
- + Dollar Sterling
- + Dollar Yen
- + Sterling Euro

Stocks

- + S&P 500
- + EuroStoxx 50
- + FTSE 100
- + Nikkei 225

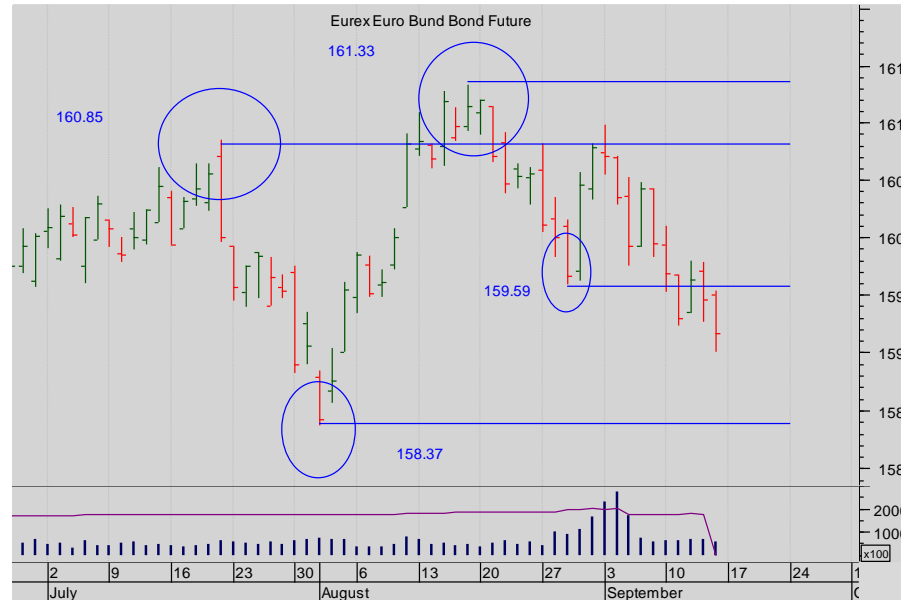
Bonds

- + Ten Year US TNote
- + Ten Year German Bund
- + UK Gilt

Commodities

- + Oil
- + Gold

IMPLIED ASSET ALLOCATION



Eurex Ten Year Bund Sep 18 Daily futures chart

This is bearish short-term, a small double top. So a move down to the recent low is likely....

Stand back.



Bonds: Liffe UK Gilt futures

Summary

Currencies

- + Dollar Euro
- + Dollar Sterling
- + Dollar Yen
- + Sterling Euro

Stocks

- + S&P 500
- + EuroStoxx 50
- + FTSE 100
- + Nikkei 225

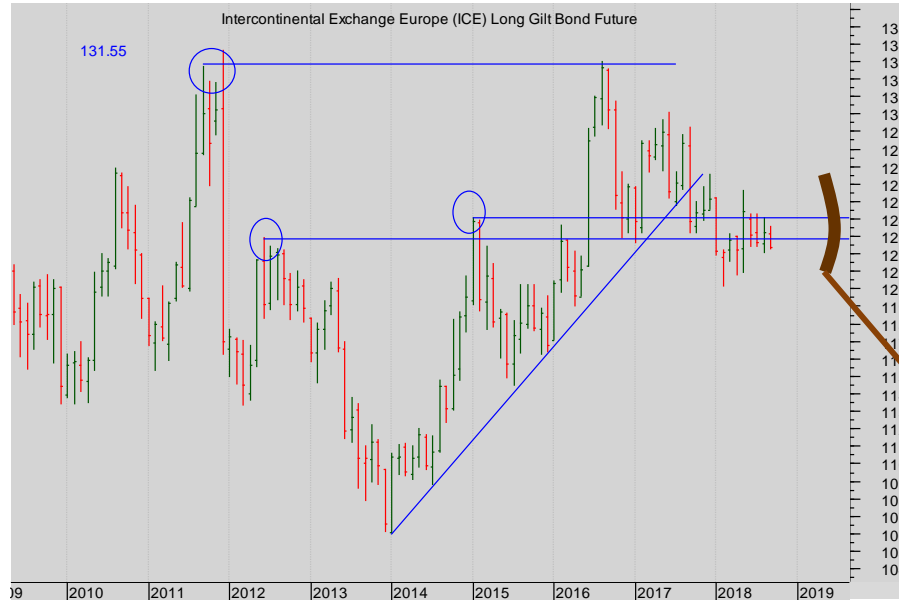
Bonds

- + Ten Year US TNote
- + Ten Year German Bund
- + UK Gilt

Commodities

- + Oil
- + Gold

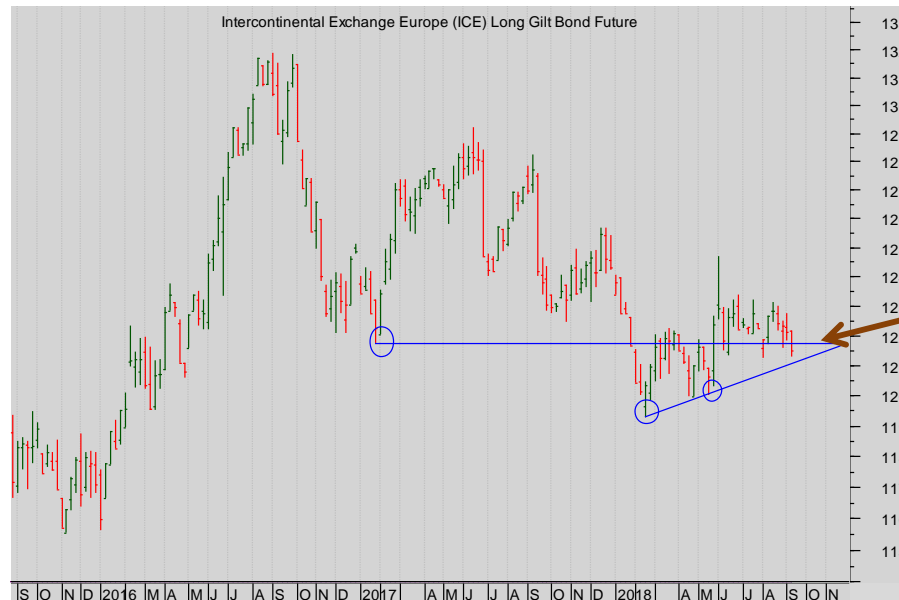
IMPLIED ASSET ALLOCATION



Liffe UK Gilt monthly futures continuation chart

1. The clear well-established long-term diagonal bull trend support that has been broken.
2. The market has fallen back to the band of support from the Prior Highs.

Look closer....



Liffe UK Gilt weekly continuation futures Chart

The trigger for the bears would be a break of the small rising diagonal confirming a push beneath the 122 low from 2016.





Bonds: Liffe UK Gilt futures

Summary

Currencies

- + Dollar Euro
- + Dollar Sterling
- + Dollar Yen
- + Sterling Euro

Stocks

- + S&P 500
- + EuroStoxx 50
- + FTSE 100
- + Nikkei 225

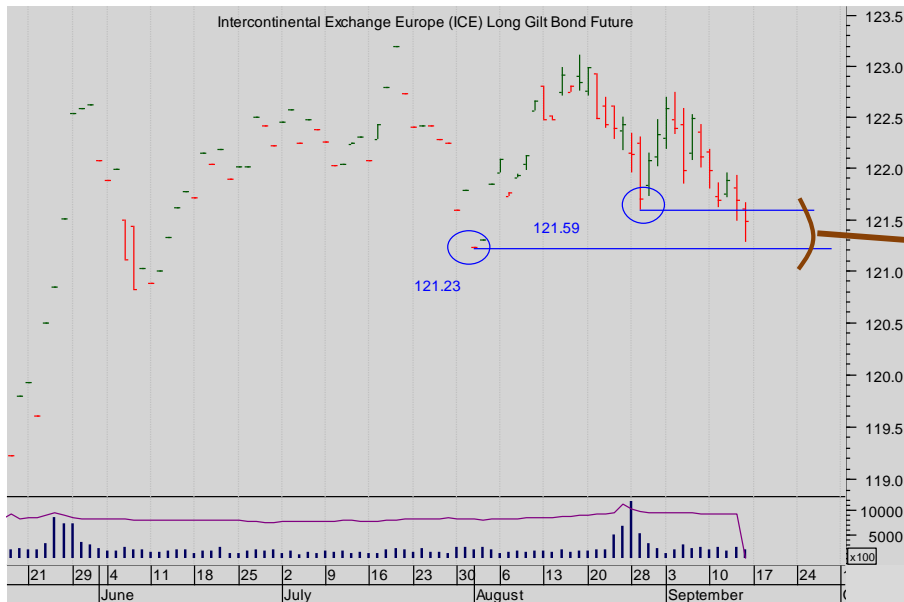
Bonds

- + Ten Year US TNote
- + Ten Year German Bund
- + UK Gilt

Commodities

- + Oil
- + Gold

IMPLIED ASSET ALLOCATION



TSE Ten Year JGB daily June 18 chart

Note the important Prior Lows.

Bears should wait for a break of those...



Commodity

COMMODITIES: The sideways price action in the Oil remains. Gold is still in the grip of a bear market, without any convincing bottom formation appearing yet.

Summary

Currencies

- + Dollar Euro
- + Dollar Sterling
- + Dollar Yen
- + Sterling Euro

Stocks

- + S&P 500
- + EuroStoxx 50
- + FTSE 100
- + Nikkei 225

Bonds

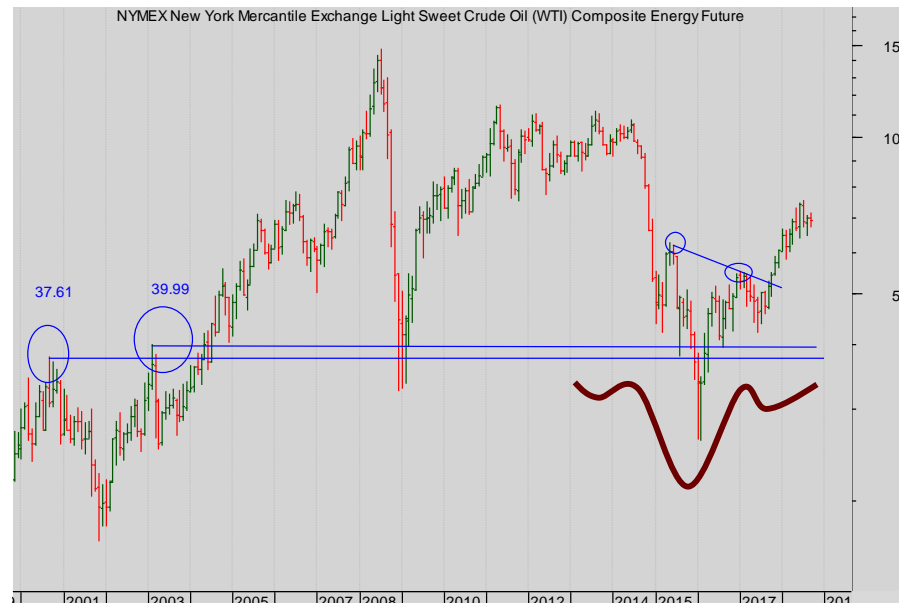
- + Ten Year US TNote
- + Ten Year German Bund
- + UK Gilt

Commodities

- + Oil
- + Gold

IMPLIED ASSET ALLOCATION

Commodities: Nymex WTI Oil



Nymex oil monthly continuation

Massive support at \$37.80

And note too the completed H&S bull reversal

Minimum move? Over \$100.

More



Summary

Currencies

- + Dollar Euro
- + Dollar Sterling
- + Dollar Yen
- + Sterling Euro

Stocks

- + S&P 500
- + EuroStoxx 50
- + FTSE 100
- + Nikkei 225

Bonds

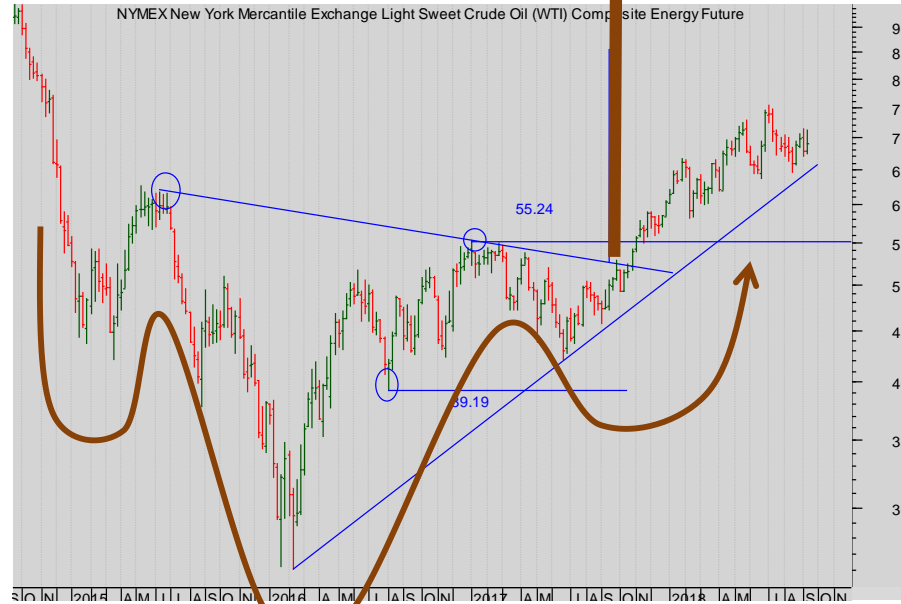
- + Ten Year US TNote
- + Ten Year German Bund
- + UK Gilt

Commodities

- + Oil
- + Gold

IMPLIED ASSET ALLOCATION

Commodities: Nymex WTI Oil



Nymex oil weekly continuation

The full splendour of the bull H&S pattern.

And the rising diagonal support....

Nymex oil daily Sep18 futures

That trading range looks solid short-term.



Summary

Currencies

- + Dollar Euro
- + Dollar Sterling
- + Dollar Yen
- + Sterling Euro

Stocks

- + S&P 500
- + EuroStoxx 50
- + FTSE 100
- + OSE Nikkei 225

Bonds

- + Ten Year US TNote
- + Ten Year German Bund
- + UK Gilt

Commodities

- + Oil
- + Gold

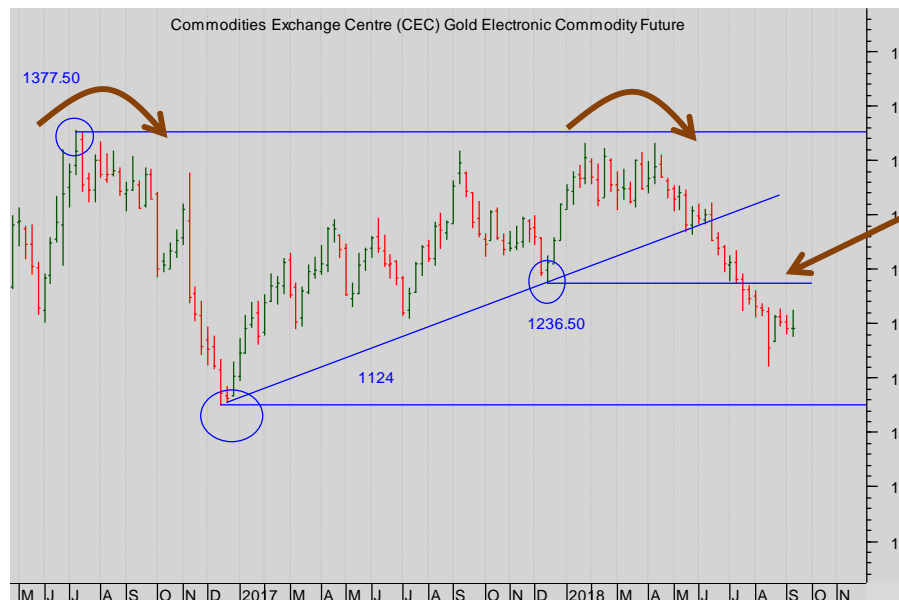
IMPLIED ASSET ALLOCATION

Commodities: Comex Gold



Comex Gold Monthly cont futures chart

The long-term chart shows a clear bounce from the long-term support from the Prior High (and Fibonacci) at 1034.



Comex Gold Weekly futures chart

NOTE the breaking of that support from the rising diagonal enthrusing the bears.

The bears remain in charge.



Summary

Currencies

- + Dollar Euro
- + Dollar Sterling
- + Dollar Yen
- + Sterling Euro

Stocks

- + S&P 500
- + EuroStoxx 50
- + FTSE 100
- + Nikkei 225

Bonds

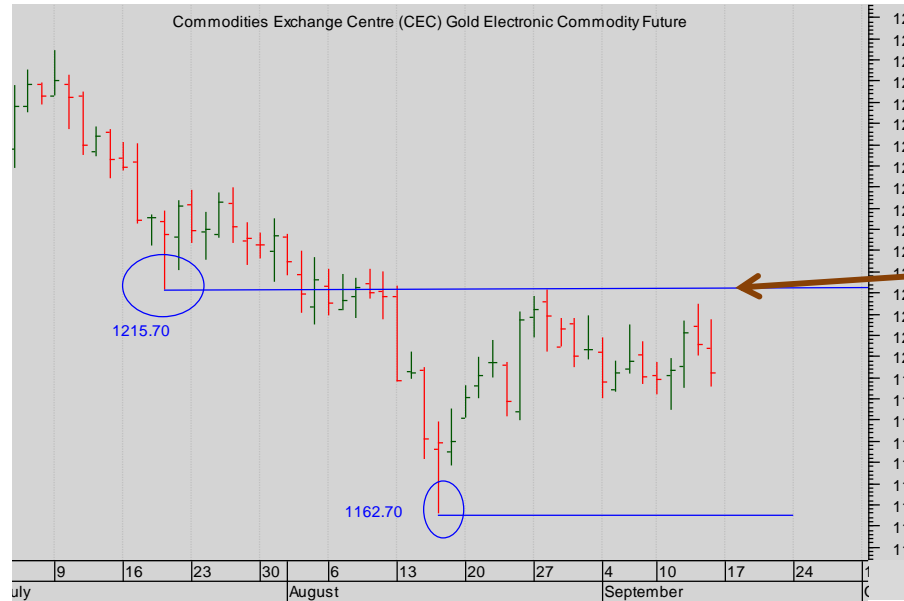
- + Ten Year US TNote
- + Ten Year German Bund
- + UK Gilt

Commodities

- + Oil
- + Gold

IMPLIED ASSET ALLOCATION

Commodities: Comex Gold



Comex Gold daily Sep 2018 futures chart

The trend is well-set.

So we remain bears while the first resistance from that low 1215 remains intact.



Summary

Summary

Currencies

- + Dollar Euro
- + Dollar Sterling
- + Dollar Yen
- + Sterling Euro

Stocks

- + S&P 500
- + EuroStoxx 50
- + FTSE 100
- + Nikkei 225

Bonds

- + Ten Year US TNote
- + Ten Year German Bund
- + UK Gilt

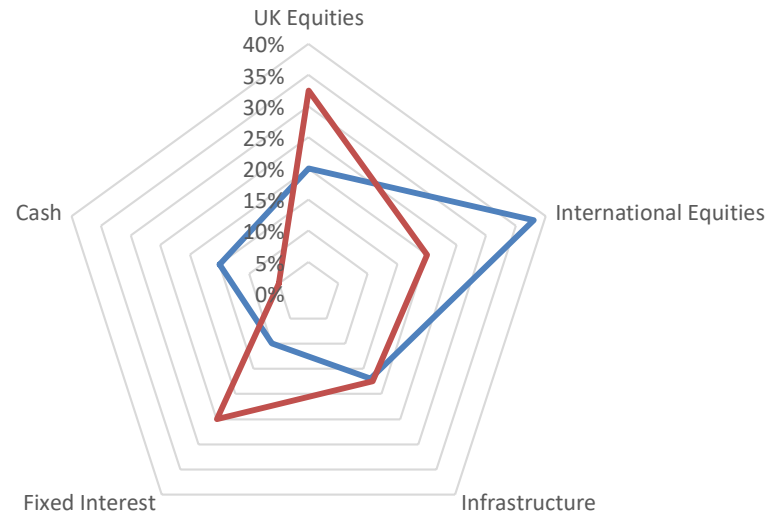
Commodities

- + Oil
- + Gold

Seven Days Ahead Balanced Risk IMPLIED Asset Allocation

v

MSCI Balanced Risk Asset Allocation



More



the technical analyst

AWARDS 2012

FINALIST BEST INDEPENDENT RESEARCH HOUSE

The material and information set out in this research is not intended to be a quote of an offer to buy or sell any financial products. Any expression of opinion is based on sources believed to be reasonably reliable but is not guaranteed as to accuracy or completeness.

The material and information herein is general and for informational purposes only. Although Seven Days Ahead endeavours to provide useful information they make no guarantee as to the accuracy or reliability of the research.

The derivative market comprises volatility and considerable risks. To the maximum extent permitted by law no responsibility or liability can be accepted by Seven Days Ahead, any company or employee within its group for any action taken as a result of the information contained in this presentation. You are requested not to rely on any representation in this research and to seek specific advice from your accountant, legal adviser or financial services adviser when dealing with specific circumstances.

Seven Days Ahead is regulated by the UK Financial Services Authority.

[Back to main menu](#)