



the technical analyst

AWARDS 2012

FINALIST BEST INDEPENDENT RESEARCH HOUSE

Summary

Currencies

- + Dollar Euro
- + Dollar Sterling
- + Dollar Yen
- + Sterling Euro

Stocks

- + S&P 500
- + EuroStoxx 50
- + FTSE 100
- + Nikkei 225

Bonds

- + Ten Year US TNote
- + Ten Year German Bund
- + UK Gilt

Commodities

- + Oil
- + Gold

IMPLIED ASSET ALLOCATION

Disclaimer



Multi-asset technical strategies

Week of 30th December 2020

Mark Sturdy

Authorised and regulated
by the FCA



summary

Very powerful signals arise when the charts of any one asset are aligned in all three time frames - see highlights

Summary

Currencies

- + Dollar Euro
- + Dollar Sterling
- + Dollar Yen
- + Sterling Euro

Long-term **BULL** Euro

Long-term FLAT Sterling
Long-term FLAT Yen
Long-term FLAT Euro

Medium-term **BULL** Euro

Medium-term FLAT Sterling
Medium-term **BULL** Yen
Medium-term FLAT Euro

Short-term **BULL** Euro

Short-term FLAT Sterling
Short-term **BULL** Yen
Short-term FLAT Euro

Stocks

- + S&P 500
- + EuroStoxx 50
- + FTSE 100
- + Nikkei 225

Long-term **BULL**

Long-term FLAT
Long-term FLAT

Medium-term **BULL**

Medium-term FLAT
Medium-term **BULL**

Short-term **BULL**

Short-term **BULL**
Short-term FLAT

Long-term **BULL**

Medium-term **BULL**

Short-term **BULL**

Bonds

- + Ten Year yield US TNote
- + Ten Year yield German Bund
- + Ten Year yield UK Gilt

Long-term FLAT
Long-term FLAT
Long-term FLAT

Medium-term FLAT
Medium-term FLAT
Medium-term FLAT

Short-term FLAT
Short-term FLAT
Short-term FLAT

Commodities

- + Oil
- + Gold

Long-term **BULL**
Long-term FLAT

Medium-term **BULL**
Medium-term **BULL**

Short-term FLAT
Short-term FLAT

IMPLIED ASSET ALLOCATION

More



Currencies: Dollar Euro

CURRENCIES:

The Euro has begun to surge against the Dollar. The break of the long-term strengthening Dollar trend from 2008 is clear and important. A slight doubt remains over the recent failure of the market to get above 1.2 (in early 2018). If that were to break the Dollar bears would really bare their teeth and drive it lower still. The absence of decisive price action in the Dollar Sterling and Sterling Euro is notable and fascinating!

Summary

Currencies

- + Dollar Euro
- + Dollar Sterling
- + Dollar Yen
- + Sterling Euro

Stocks

- + S&P 500
- + EuroStoxx 50
- + FTSE 100
- + Nikkei 225

Bonds

- + Ten Year US TNote
- + Ten Year German Bund
- + UK Gilt

Commodities

- + Oil
- + Gold

IMPLIED ASSET ALLOCATION



Dollar Euro monthly spot cash chart

These powerful resistances remain above the market at 1.15. But the deep penetration of recent months + **the break of the 2007 downtrend** suggests a weakening Dollar is likely to continue ...

More



Summary

Currencies

- + Dollar Euro
- + Dollar Sterling
- + Dollar Yen
- + Sterling Euro

Stocks

- + S&P 500
- + EuroStoxx 50
- + FTSE 100
- + Nikkei 225

Bonds

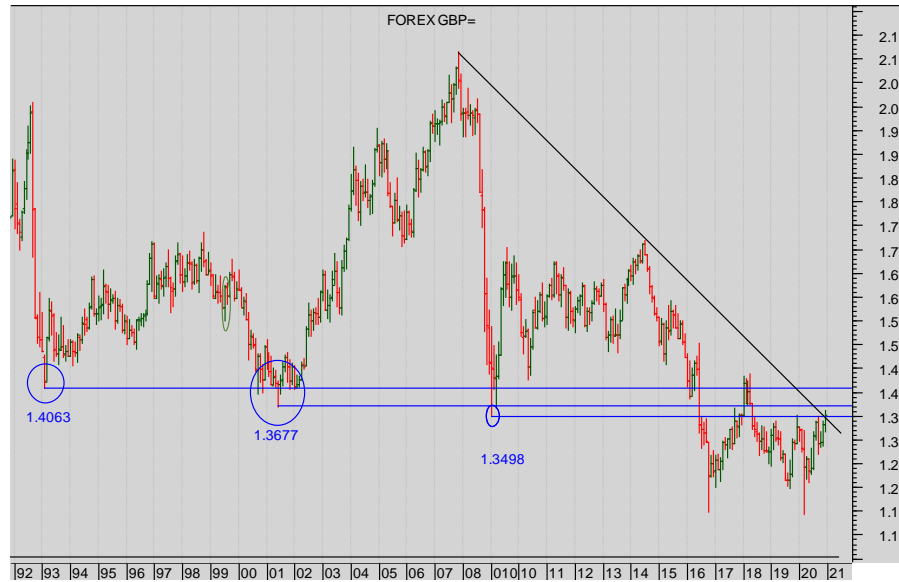
- + Ten Year US TNote
- + Ten Year German Bund
- + UK Gilt

Commodities

- + Oil
- + Gold

IMPLIED ASSET ALLOCATION

Currencies: Dollar Sterling



Dollar Sterling Monthly spot cash chart

All the Prior Pivotal lows of 1993, 2001, 2008 and 2016 have formed a Multiple Top - but the sideways price action beneath 1.35 is now pressing against the diagonal downtrend resistance ... yet still below powerful resistance from the horizontals...



Dollar Sterling Monthly spot cash **LINE CHART** based on closes

This doesn't add much – the resistance above the market at 1.4063 remains impressive – throws the diagonal downtrend resistance only established at two places, into **relative unimportance**.

More



Summary

Currencies

- + Dollar Euro
- + Dollar Sterling
- + Dollar Yen
- + Sterling Euro

Stocks

- + S&P 500
- + EuroStoxx 50
- + FTSE 100
- + Nikkei 225

Bonds

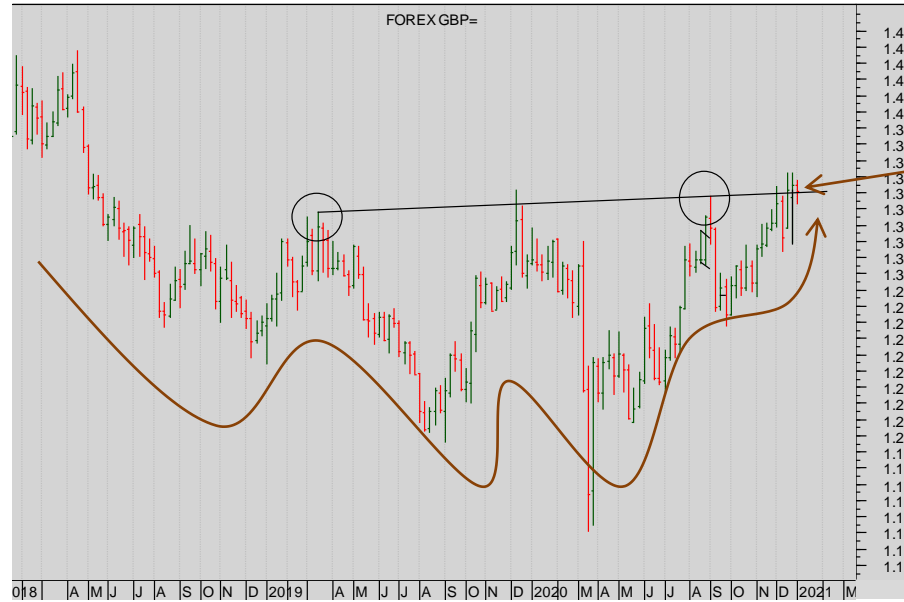
- + Ten Year US TNote
- + Ten Year German Bund
- + UK Gilt

Commodities

- + Oil
- + Gold

IMPLIED ASSET ALLOCATION

Currencies: Dollar Sterling



Dollar Sterling weekly spot cash chart

This has **good bull potential**

Note the repeated failures of the market at the 1.3383 boundary....
As with the monthly chart, **a push up through 1.3498 would complete a complex H&S reversal**.....

Wait for the break....



Dollar Sterling daily spot cash chart

The hesitation at the Prior High has been puzzling and cautionary to Sterling Bulls.....

Stand back and watch.



Summary

Currencies

- + Dollar Euro
- + Dollar Sterling
- + Dollar Yen
- + Sterling Euro

Stocks

- + S&P 500
- + EuroStoxx 50
- + FTSE 100
- + Nikkei 225

Bonds

- + Ten Year US TNote
- + Ten Year German Bund
- + UK Gilt

Commodities

- + Oil
- + Gold

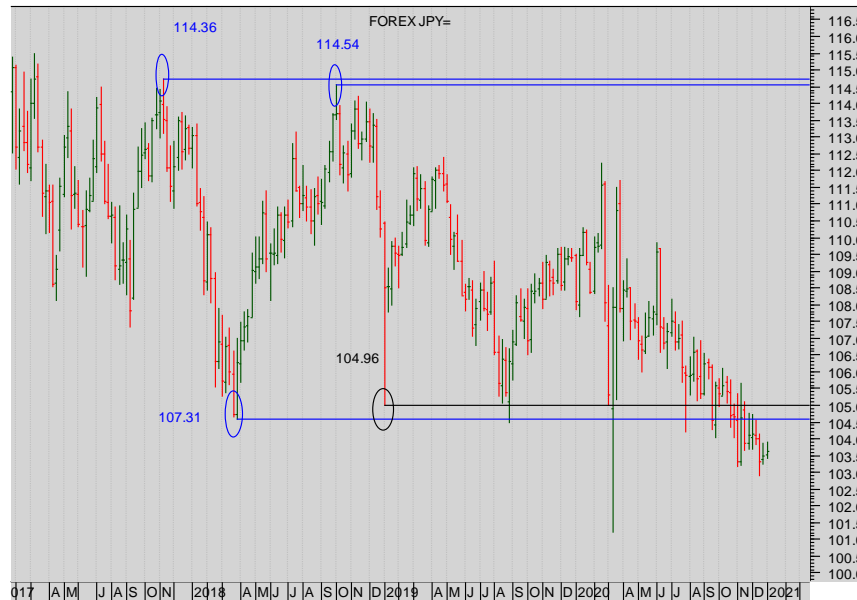
IMPLIED ASSET ALLOCATION

Currencies: Dollar Yen



Dollar Yen monthly spot cash chart

It's not clear.



Dollar Yen weekly spot cash chart

This is now clearer: note the slow motion breakdown through this now sustained it suggests a much stronger Yen.

And resistance above the market now sits at 104.50-105

More



Summary

Currencies

- + Dollar Euro
- + Dollar Sterling
- + Dollar Yen
- + Sterling Euro

Stocks

- + S&P 500
- + EuroStoxx 50
- + FTSE 100
- + Nikkei 225

Bonds

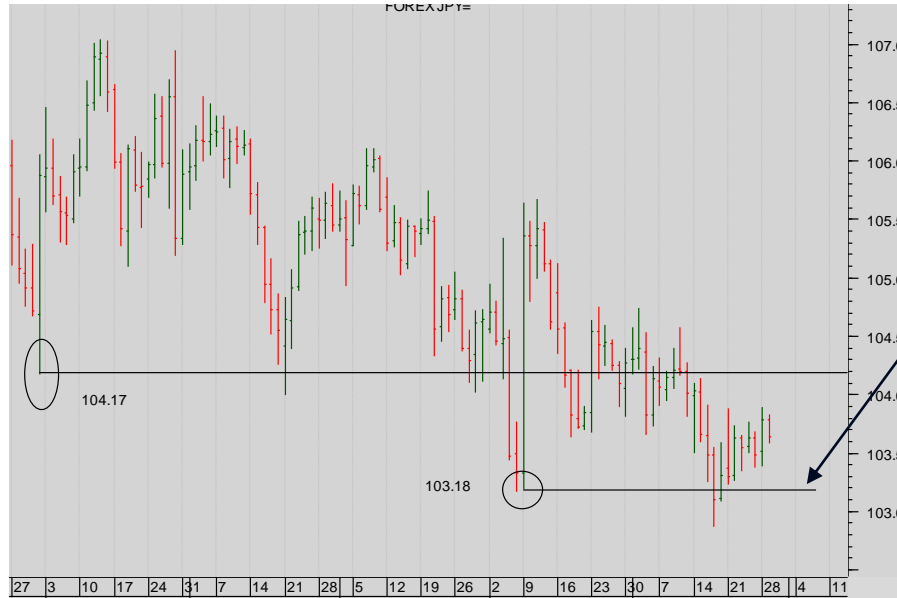
- + Ten Year US TNote
- + Ten Year German Bund
- + UK Gilt

Commodities

- + Oil
- + Gold

IMPLIED ASSET ALLOCATION

Currencies: Dollar Yen



Dollar Yen daily spot cash chart

Short-term, it's not clear.
The volatility is disturbing.

An unambiguous break beneath
103.18 would help.



Currencies: Sterling Euro

Summary

Currencies

- + Dollar Euro
- + Dollar Sterling
- + Dollar Yen
- + Sterling Euro

Stocks

- + S&P 500
- + EuroStoxx 50
- + FTSE 100
- + Nikkei 225

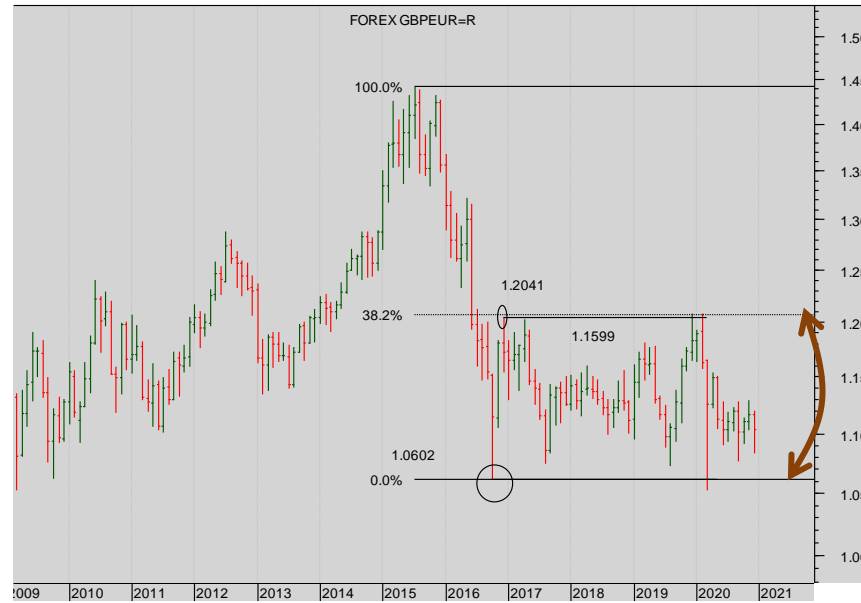
Bonds

- + Ten Year US TNote
- + Ten Year German Bund
- + UK Gilt

Commodities

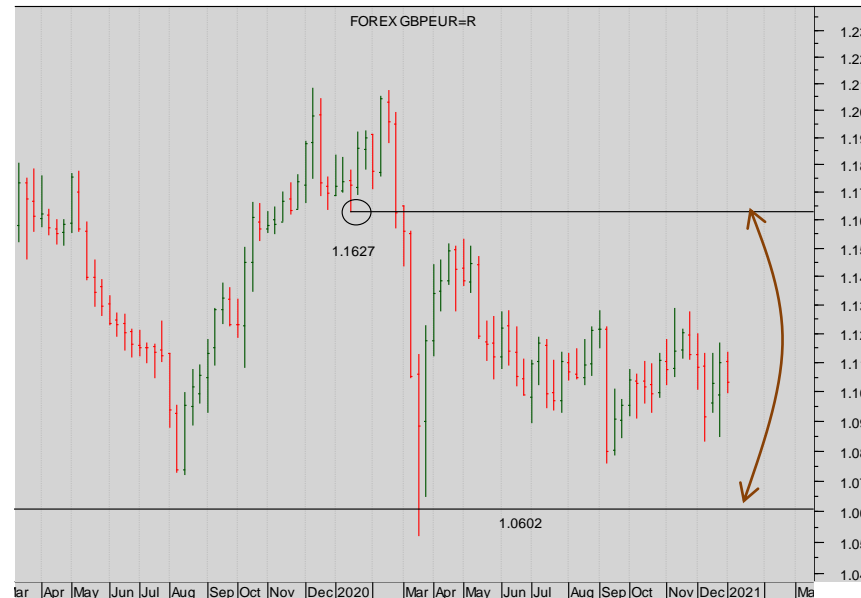
- + Oil
- + Gold

IMPLIED ASSET ALLOCATION



Sterling Euro monthly spot cash chart

The market remains in the broad trading range.



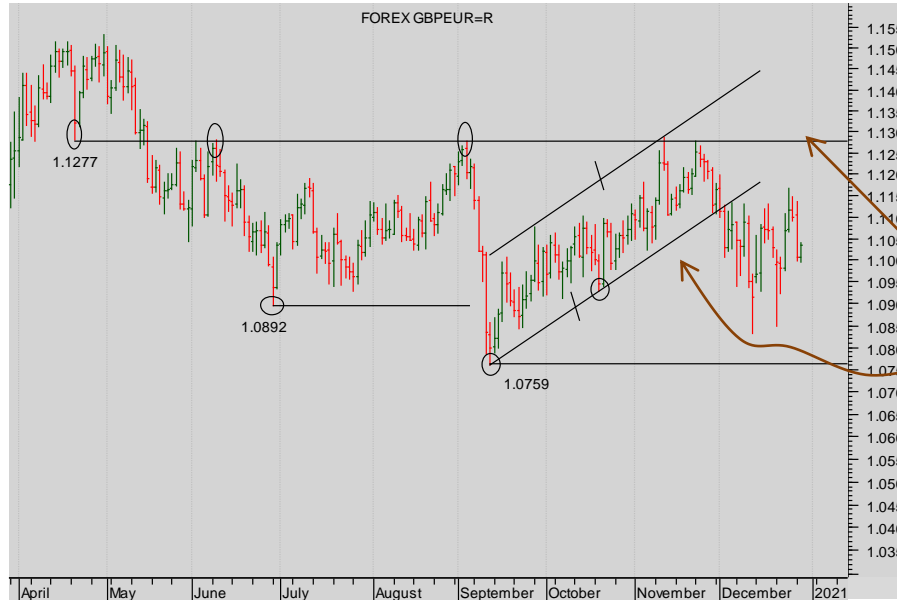
Sterling Euro weekly spot cash chart

Inside the range: there is no clarity.

More



Currencies: Sterling Euro



Sterling Euro daily spot cash chart

Note the clear resistance at the 1.1277 level... a break up through that would get the Sterling bulls going.

Note too the steep short-term diagonal trendline support smashed ...

Stand back for clarity.

Summary

Currencies

- + Dollar Euro
- + Dollar Sterling
- + Dollar Yen
- + Sterling Euro

Stocks

- + S&P 500
- + EuroStoxx 50
- + FTSE 100
- + Nikkei 225

Bonds

- + Ten Year US TNote
- + Ten Year German Bund
- + UK Gilt

Commodities

- + Oil
- + Gold

IMPLIED ASSET ALLOCATION



Stocks: CME S&P

STOCKS:

The S&P and Japan are roaring away. EuroStoxx is poised to drive up through important levels (but hasn't done so yet) FTSE too is being dragged better – but into powerful resistance.

Summary

Currencies

- + Dollar Euro
- + Dollar Sterling
- + Dollar Yen
- + Sterling Euro

Stocks

- + S&P 500
- + EuroStoxx 50
- + FTSE 100
- + Nikkei 225

Bonds

- + Ten Year US TNote
- + Ten Year German Bund
- + UK Gilt

Commodities

- + Oil
- + Gold

IMPLIED ASSET ALLOCATION



CME S&P 500 monthly cont. futures chart

The market has driven above the Old high of 3397 – **and closed above that level.**

The next bull leg is beginning.

Powerful support now established at 3397.50

More



Stocks: CME S&P 500

Summary

Currencies

- + Dollar Euro
- + Dollar Sterling
- + Dollar Yen
- + Sterling Euro

Stocks

- + S&P 500
- + EuroStoxx 50
- + FTSE 100
- + Nikkei 225

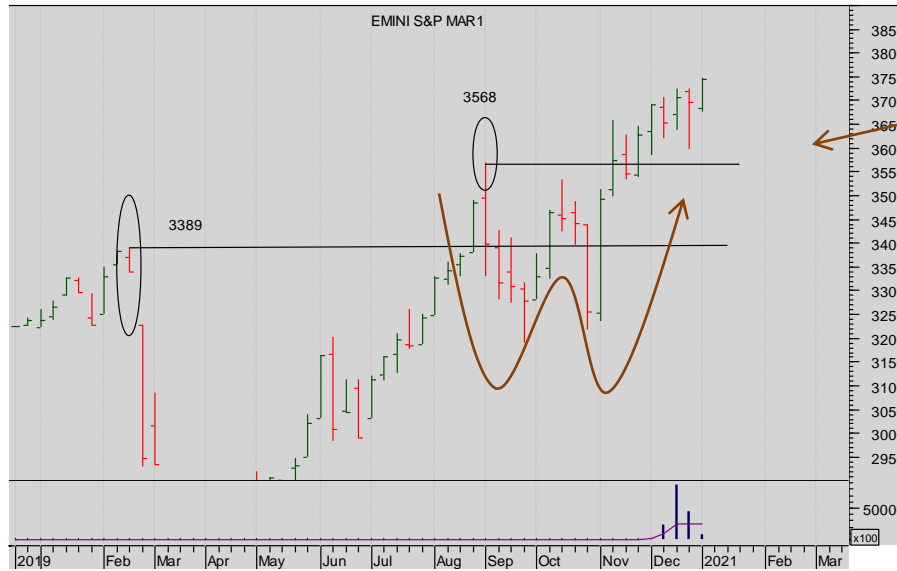
Bonds

- + Ten Year US TNote
- + Ten Year German Bund
- + UK Gilt

Commodities

- + Oil
- + Gold

IMPLIED ASSET ALLOCATION

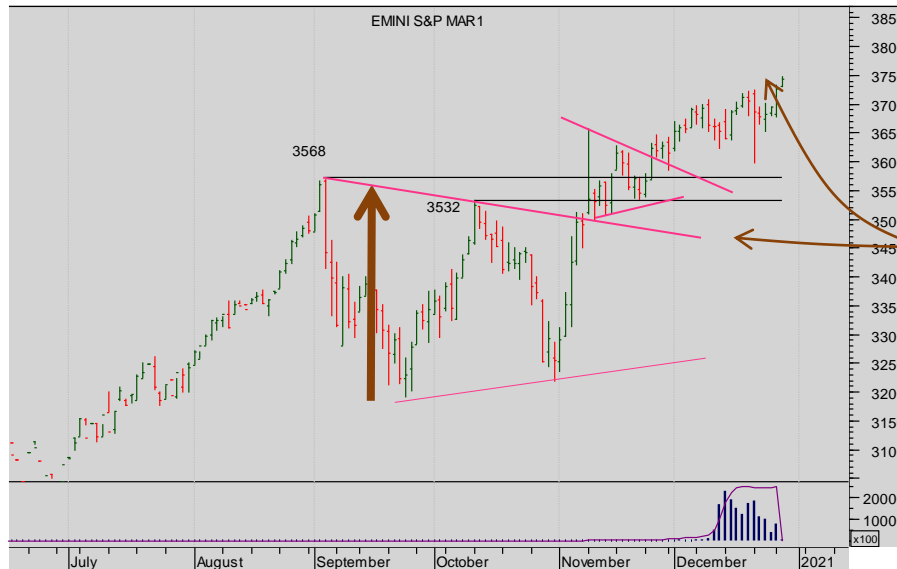


CME S&P 500 cont. weekly cont. chart

The catalyst for the break above 3388 was a bull continuation triangle/ double Bottom that has **completed**...

Minimum move? 3900.

We are bulls.



CME S&P 500 daily DEC 2020 chart

It's a bull market.

Two triangles have completed and are **both driving the market higher**.

More



Stocks: Eurex EuroStoxx 50

Summary

Currencies

- + Dollar Euro
- + Dollar Sterling
- + Dollar Yen
- + Sterling Euro

Stocks

- + S&P 500
- + EuroStoxx 50
- + FTSE 100
- + Nikkei 225

Bonds

- + Ten Year US TNote
- + Ten Year German Bund
- + UK Gilt

Commodities

- + Oil
- + Gold

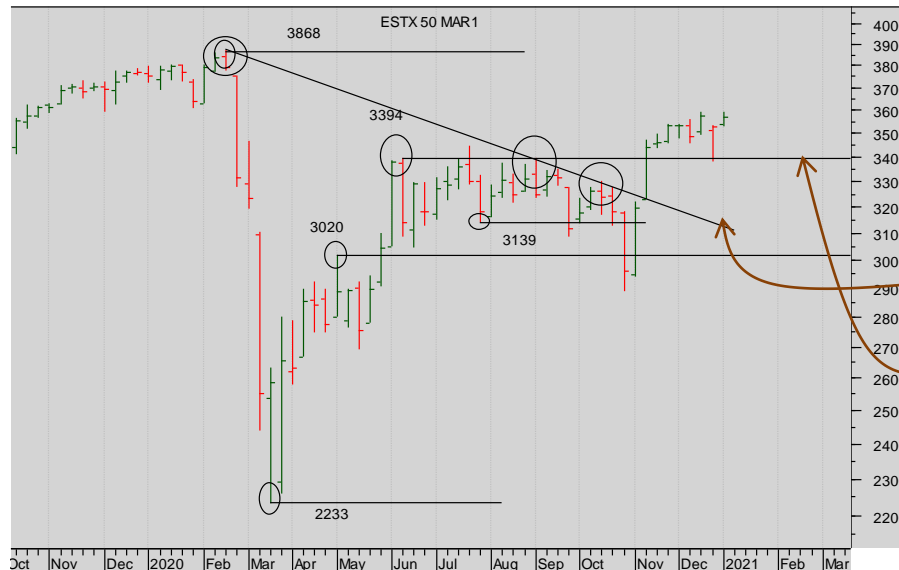
IMPLIED ASSET ALLOCATION



Eurex EuroStoxx 50 monthly continuation futures chart

1. The triple failure of the market at 3700 forced the sell off.
2. The Monthly Key Reversal of the market was the immediate bear catalyst
3. Yet there was no confirmed clear monthly close beneath the Prior Low range of 2645-2895

So back within a trading range.



Eurex EuroStoxx 50 weekly continuation futures chart

This suggests there is more to come on the upside because:

1. There is a breach of the well-established falling diagonal
2. and a push above the Prior High 3394.

More



Stocks: Eurex EuroStoxx 50

Summary

Currencies

- + Dollar Euro
- + Dollar Sterling
- + Dollar Yen
- + Sterling Euro

Stocks

- + S&P 500
- + EuroStoxx 50
- + FTSE 100
- + Nikkei 225

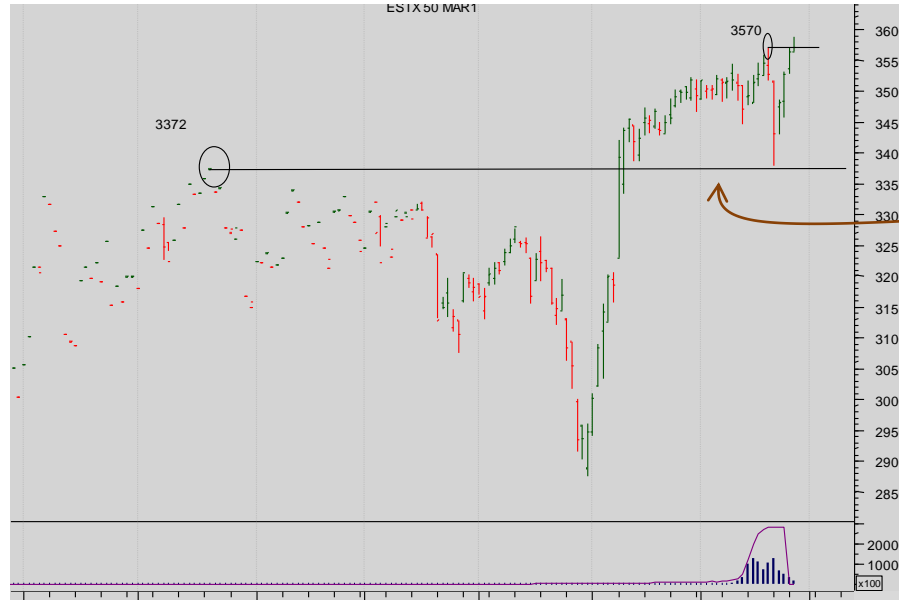
Bonds

- + Ten Year US TNote
- + Ten Year German Bund
- + UK Gilt

Commodities

- + Oil
- + Gold

IMPLIED ASSET ALLOCATION



Eurex EuroStoxx 50 daily Dec 19 futures chart

The market has pushed through the near high, paused, retested it and then held above.

It looks strong and underpinned.



Summary

Currencies

- + Dollar Euro
- + Dollar Sterling
- + Dollar Yen
- + Sterling Euro

Stocks

- + S&P 500
- + EuroStoxx 50
- + **FTSE 100**
- + Nikkei 225

Bonds

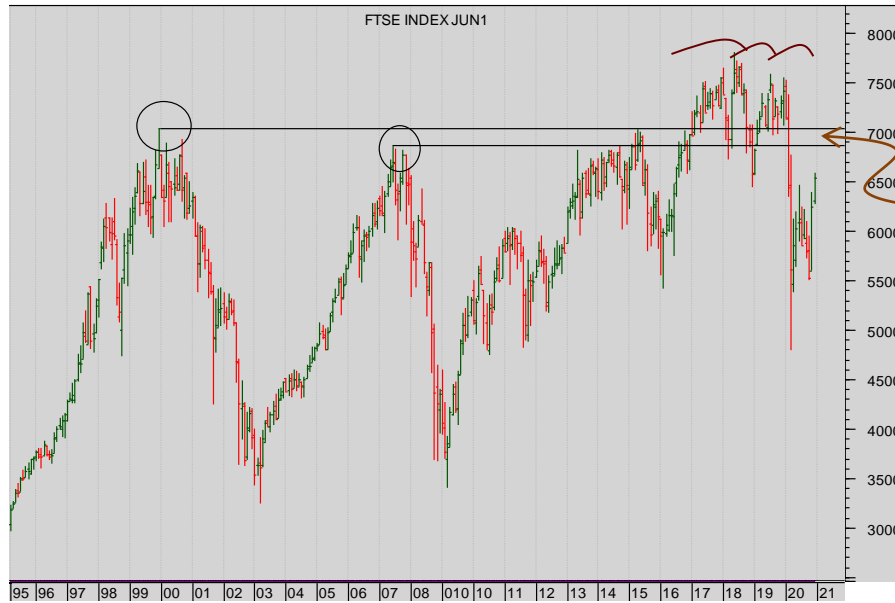
- + Ten Year US TNote
- + Ten Year German Bund
- + UK Gilt

Commodities

- + Oil
- + Gold

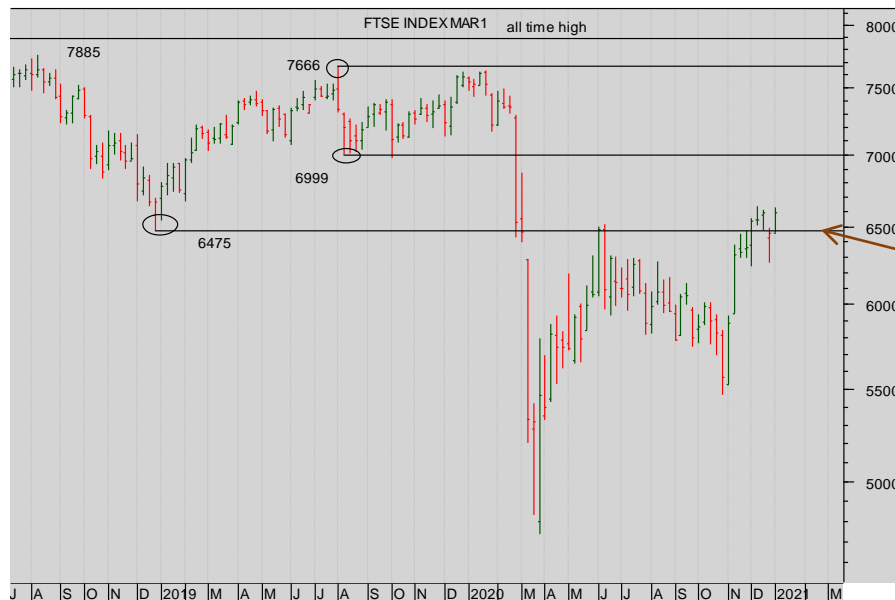
IMPLIED ASSET ALLOCATION

Stocks: Liffe FTSE 100



Liffe FTSE 100 Monthly continuation futures chart

There is now massive resistance above the market at 6475 and very little support.



Liffe FTSE 100 Weekly cont. futures chart

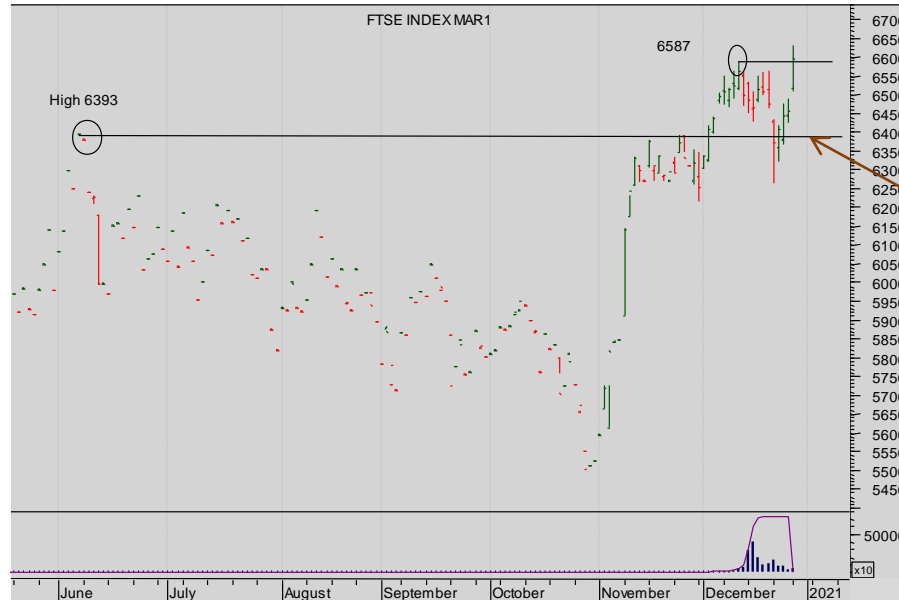
A bull flag has completed and is driving the market better .

But resistance has begun at the 6475 Prior Low – there is a band of resistance between here and 6999.

More



Stocks: Liffe FTSE 100



Liffe FTSE 100 Mar 21 daily futures chart

Now we have a clear break above the Prior High (in June) and more recent Prior Highs too!

And another break above the recent high at 6587...

The bulls are in charge.

Summary

Currencies

- + Dollar Euro
- + Dollar Sterling
- + Dollar Yen
- + Sterling Euro

Stocks

- + S&P 500
- + EuroStoxx 50
- + **FTSE 100**
- + Nikkei 225

Bonds

- + Ten Year US TNote
- + Ten Year German Bund
- + UK Gilt

Commodities

- + Oil
- + Gold

IMPLIED ASSET ALLOCATION



Summary

Currencies

- + Dollar Euro
- + Dollar Sterling
- + Dollar Yen
- + Sterling Euro

Stocks

- + S&P 500
- + EuroStoxx 50
- + FTSE 100
- + **Nikkei 225**

Bonds

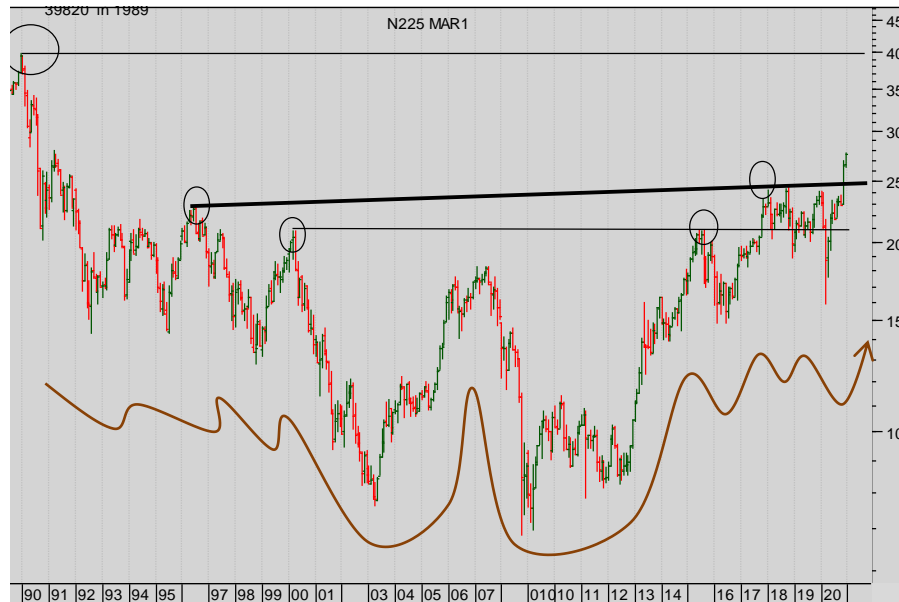
- + Ten Year US TNote
- + Ten Year German Bund
- + UK Gilt

Commodities

- + Oil
- + Gold

IMPLIED ASSET ALLOCATION

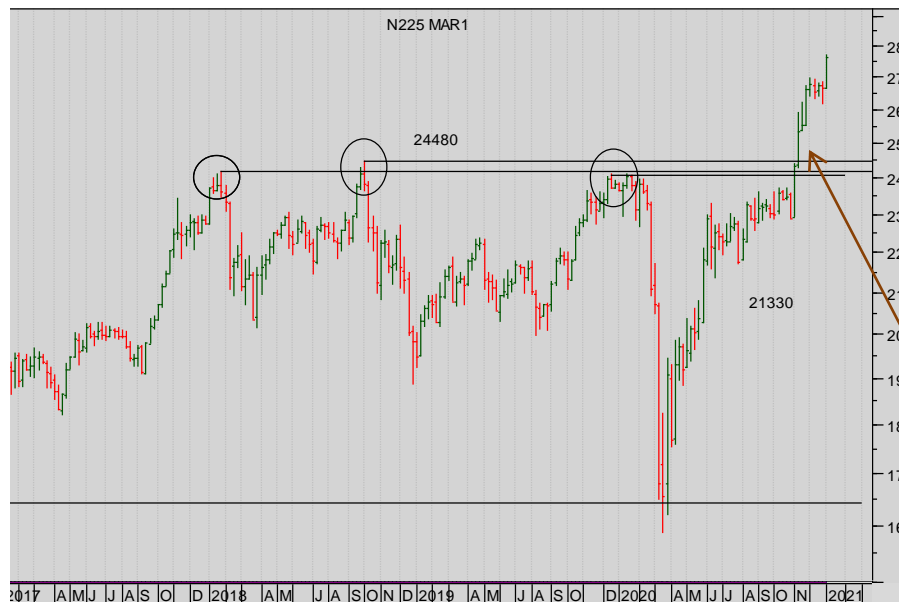
Stocks: OSE Nikkei 225



Nikkei 225 chart (monthly)

The close above here **on the month** is very bullish.

It completes a complex but identifiable Double Headed Head and Shoulders Reversal - a very large one - **with a minimum move up to 40000 or so (measured on a linear chart.)**



Nikkei 225 chart (WEEKLY)

The market has surged through the longer-term highs at 24480.

The break (and weekly close) above those supports (now) is massively bullish.

Support on any pull-back lies beneath t 24500

More



Stocks: OSE Nikkei 225

Summary

Currencies

- + Dollar Euro
- + Dollar Sterling
- + Dollar Yen
- + Sterling Euro

Stocks

- + S&P 500
- + EuroStoxx 50
- + FTSE 100
- + Nikkei 225

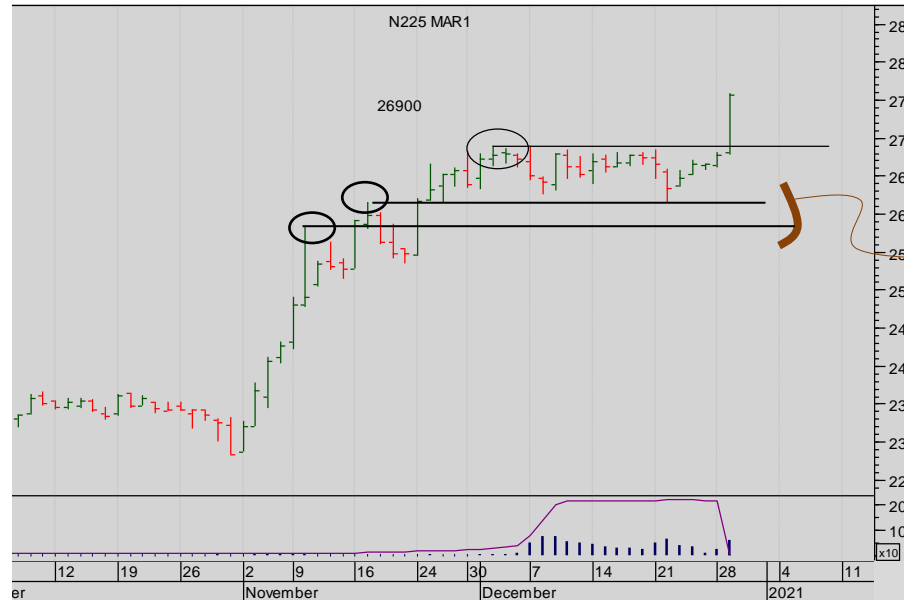
Bonds

- + Ten Year US TNote
- + Ten Year German Bund
- + UK Gilt

Commodities

- + Oil
- + Gold

IMPLIED ASSET ALLOCATION



Nikkei 225 chart Daily Dec 2020.

Note that the first short-term support from the Prior Highs has held and bounced the market better.

The push up through the recent high at 26900 creates another higher support on any pull-back...

So the market ratchets higher and higher...



Bonds

BONDS:

Still we wait for clarity in any of these markets. Still there are clear and decisive levels to watch – and the markets are close to those levels right now in multiple time-frames...

Summary

Currencies

- + Dollar Euro
- + Dollar Sterling
- + Dollar Yen
- + Sterling Euro

Stocks

- + S&P 500
- + EuroStoxx 50
- + FTSE 100
- + Nikkei 225

Bonds

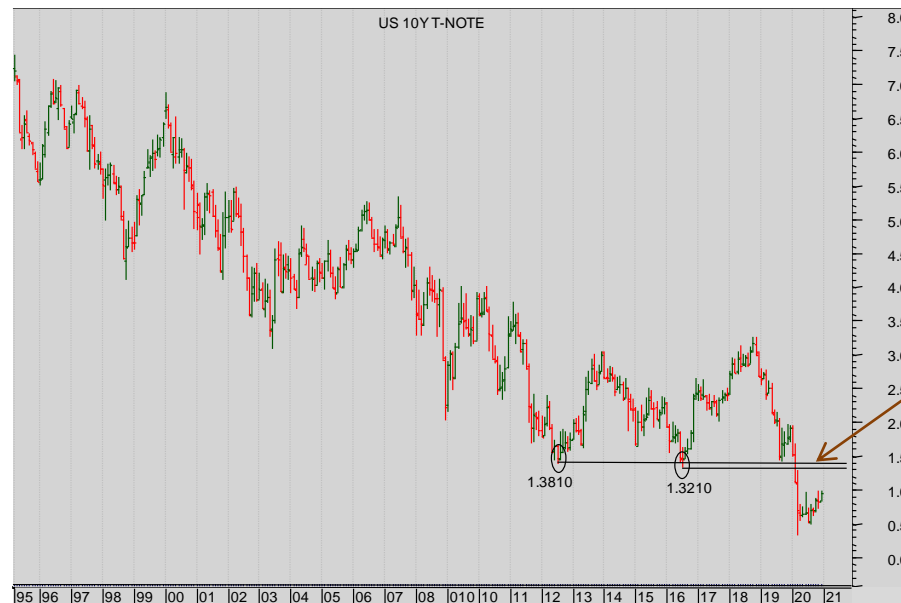
- + Ten Year US TNotes
- + Ten Year German Bund
- + UK Gilt

Commodities

- + Oil
- + Gold

IMPLIED ASSET ALLOCATION

Bonds: US Ten Year Notes (Yield)



US Ten Year Notes (Yield) monthly chart

The long-run bear trend : the recent surge has driven the market through the Level achieved in 2012 and 2016 –all-time Prior LOWs.

There is now powerful resistance above the market at 1.32.

The market looks set for a retracement to test resistance at 1.32/8.

More



Summary

Currencies

- + Dollar Euro
- + Dollar Sterling
- + Dollar Yen
- + Sterling Euro

Stocks

- + S&P 500
- + EuroStoxx 50
- + FTSE 100
- + Nikkei 225

Bonds

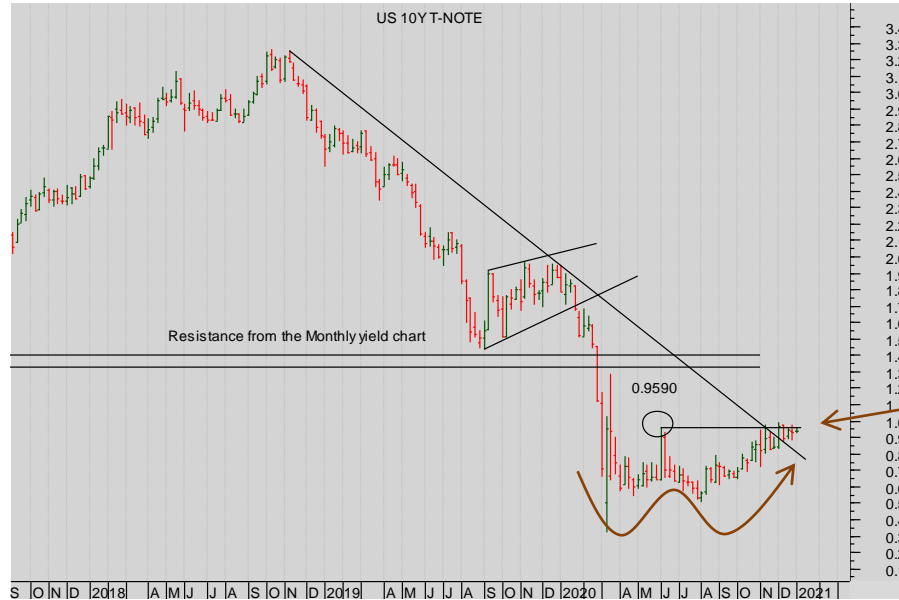
- + Ten Year US TNotes
- + Ten Year German Bund
- + UK Gilt

Commodities

- + Oil
- + Gold

IMPLIED ASSET ALLOCATION

Bonds: US Ten Year Notes (Yield)

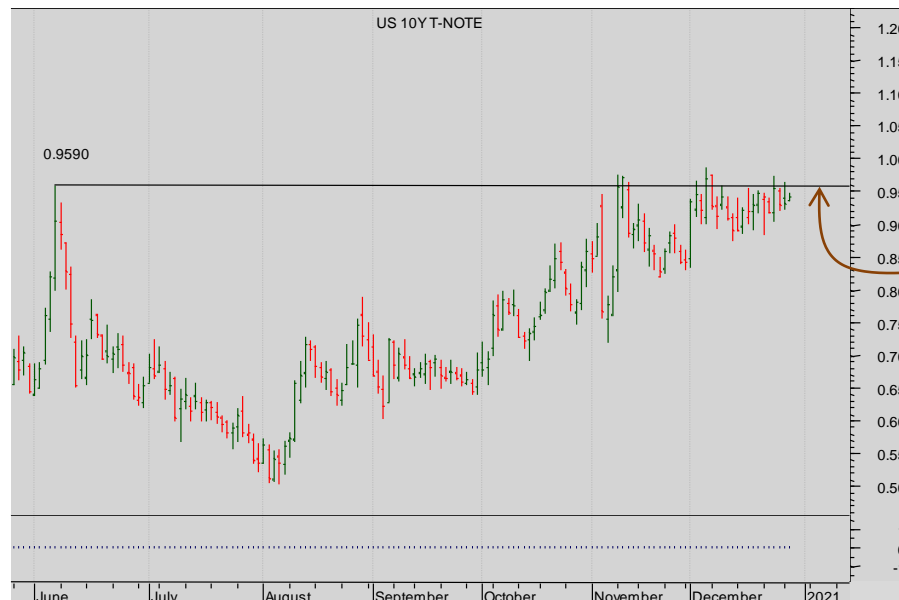


US Ten Year Notes (Yield) weekly chart

The accelerating bear trend (falling rates) from 2018 has paused this year - note the intersection of the Prior High at 0.9590 and the downtrend resistance .

A break up through 0.9590 would complete both a Double Bottom and break the downtrend resistance from 2018...

Watch and wait.



US Ten Year Notes (Yield) daily chart

In detail, the importance of the Prior Highs is clear. Wait for a clear break above before buying.

More



Summary

Currencies

- + Dollar Euro
- + Dollar Sterling
- + Dollar Yen
- + Sterling Euro

Stocks

- + S&P 500
- + EuroStoxx 50
- + FTSE 100
- + Nikkei 225

Bonds

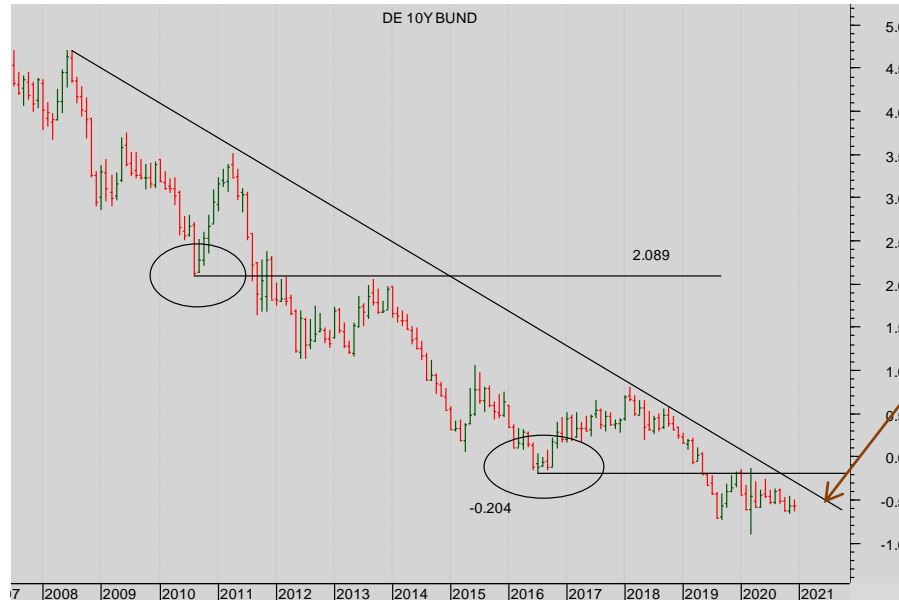
- + Ten Year US TNote
- + Ten Year German Bund
- + UK Gilt

Commodities

- + Oil
- + Gold

IMPLIED ASSET ALLOCATION

Bonds: German Bund yield chart



Bund monthly yield chart

The long-term bear trend from 1980 and the nearer term bear trend from 2008.

Note how close we are to the shorter steeper trend from 2008.



Bund weekly yield chart

Here is another bear trend from 2018 established at successive points.

The horizontal resistance above the market at -0.2 dominates the chart as well.

...look closer.

More



Bonds: German Bund yield chart



Bund daily yield chart

Is this a continuation bear wedge?
Wait for a clear break of the falling diagonal.

Summary

Currencies

- + Dollar Euro
- + Dollar Sterling
- + Dollar Yen
- + Sterling Euro

Stocks

- + S&P 500
- + EuroStoxx 50
- + FTSE 100
- + Nikkei 225

Bonds

- + Ten Year US TNote
- + Ten Year German Bund
- + UK Gilt

Commodities

- + Oil
- + Gold

IMPLIED ASSET ALLOCATION



Bonds: UK Gilt yield chart



Gilt monthly yield chart

The market long-term bear trend.

We are far from breaking the diagonal downtrend resistance.

Summary

Currencies

- + Dollar Euro
- + Dollar Sterling
- + Dollar Yen
- + Sterling Euro

Stocks

- + S&P 500
- + EuroStoxx 50
- + FTSE 100
- + Nikkei 225

Bonds

- + Ten Year US TNote
- + Ten Year German Bund
- + UK Gilt

Commodities

- + Oil
- + Gold

IMPLIED ASSET ALLOCATION

Gilt weekly yield chart

The attempt to break back above the 0.34% resistance (an H&S Reversal as the catalyst) failed.

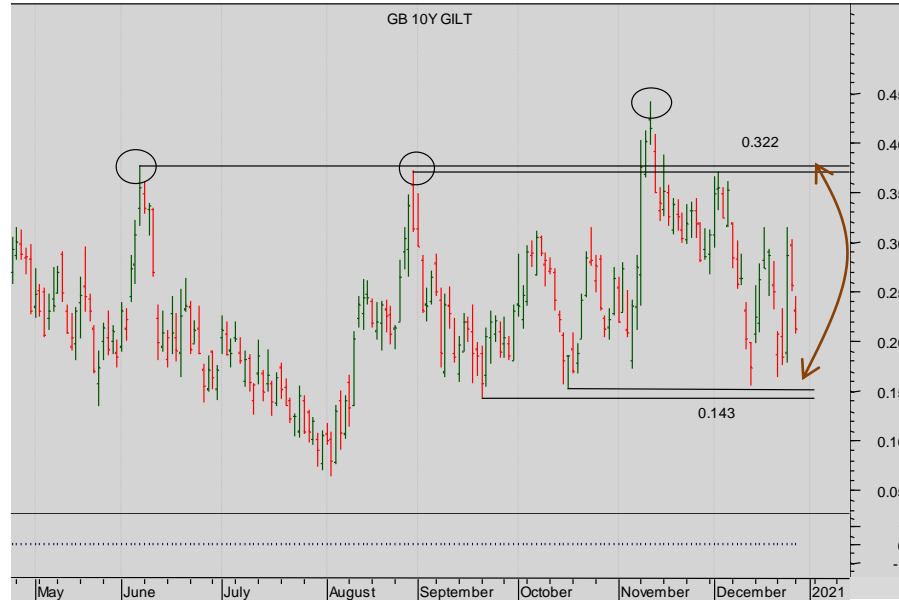


1. The steeper diagonal trendline resistance from 2018 was smashed, BUT IT PROVED TO BE A FALSE BREAK as the market fell back through it.
2. The sideways price action beneath the resistance from the Low at 0.34% is not clear...

More



Bonds: UK Gilt yield chart



Gilt daily yield chart

Stand back , watch the trading range, and await clarity.

Summary

Currencies

- + Dollar Euro
- + Dollar Sterling
- + Dollar Yen
- + Sterling Euro

Stocks

- + S&P 500
- + EuroStoxx 50
- + FTSE 100
- + Nikkei 225

Bonds

- + Ten Year US TNote
- + Ten Year German Bund
- + **UK Gilt**

Commodities

- + Oil
- + Gold

IMPLIED ASSET ALLOCATION



Summary

Currencies

- + Dollar Euro
- + Dollar Sterling
- + Dollar Yen
- + Sterling Euro

Stocks

- + S&P 500
- + EuroStoxx 50
- + FTSE 100
- + Nikkei 225

Bonds

- + Ten Year US TNote
- + Ten Year German Bund
- + UK Gilt

Commodities

- + Oil
- + Gold

IMPLIED ASSET ALLOCATION

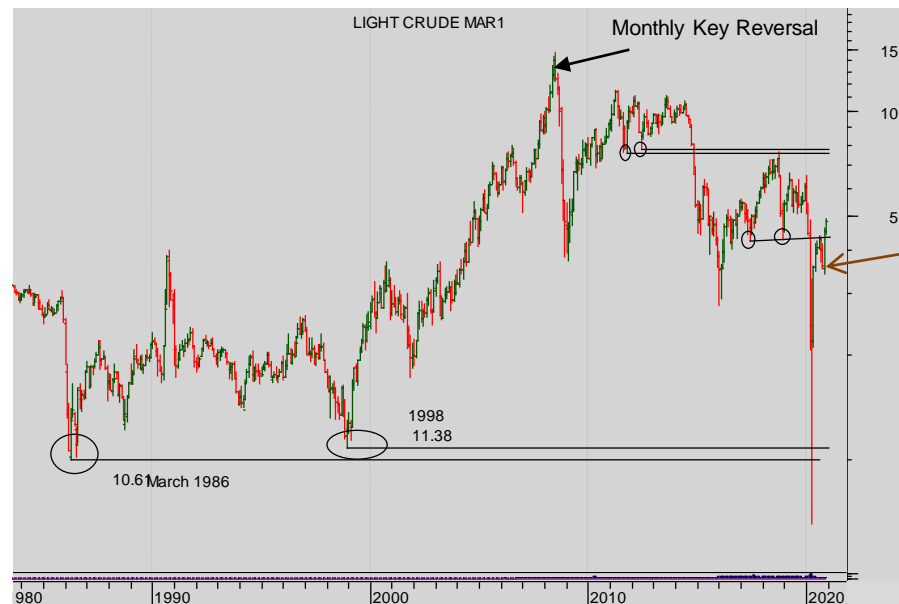
Commodity

COMMODITIES:

Oil's bullish monthly reversal signal still dominates. The medium-term resistances are clear but countered (surely more than) by a solidly-constructed medium-term bull trend from April.

The pause in Gold since August at a long-term reversal level is entirely to be expected. It's not clear how it will be resolved. All time frames are unclear: stand back!

Commodities: Nymex WTI Oil



Nymex oil monthly continuation

On the bounce, there was powerful resistance at Prior low band at \$44.50-47.50.

Note the completion of a monthly Key Reversal that has send the market up through the Neckline resistance.

More



Summary

Currencies

- + Dollar Euro
- + Dollar Sterling
- + Dollar Yen
- + Sterling Euro

Stocks

- + S&P 500
- + EuroStoxx 50
- + FTSE 100
- + Nikkei 225

Bonds

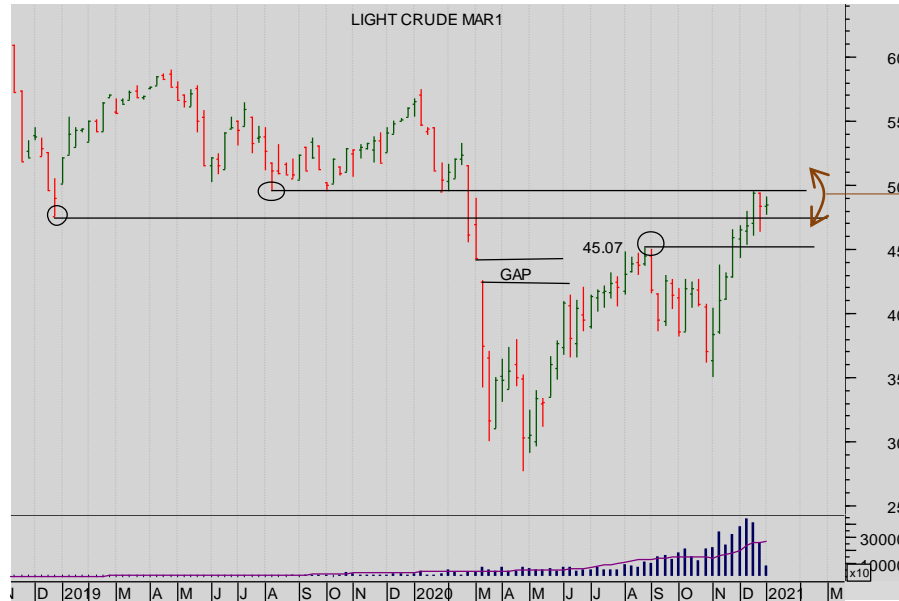
- + Ten Year US TNote
- + Ten Year German Bund
- + UK Gilt

Commodities

- + Oil
- + Gold

IMPLIED ASSET ALLOCATION

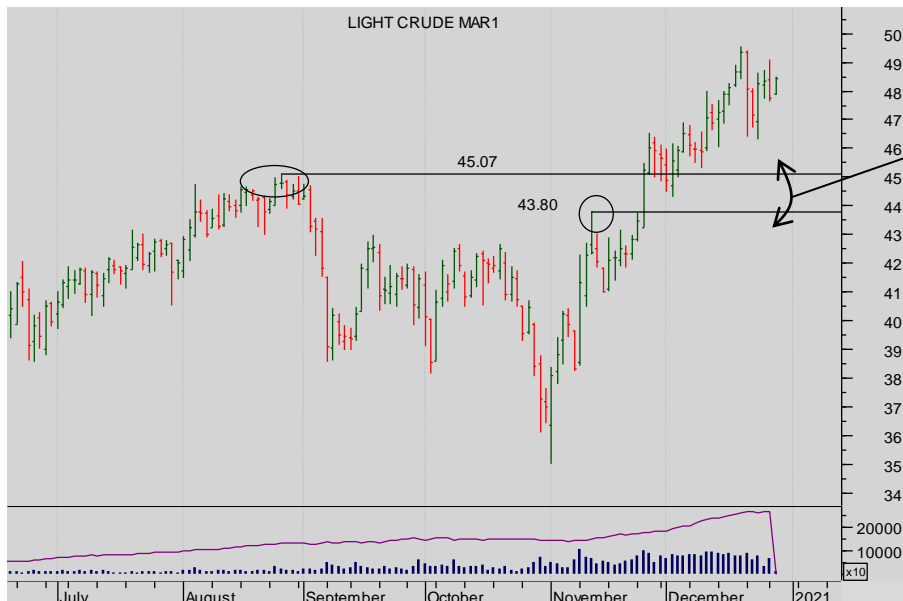
Commodities: Nymex WTI Oil



Nymex oil weekly continuation

But ... There is a band of resistance above that may cause the market to struggle.

In this time frame the market looks **bullish** but **without great impetus**.



Nymex oil daily Dec 2020 futures

The Prior Highs 45.07 – 43.80 are a strong band of good support and **endorsing the bull trend**.



Summary

Currencies

- + Dollar Euro
- + Dollar Sterling
- + Dollar Yen
- + Sterling Euro

Stocks

- + S&P 500
- + EuroStoxx 50
- + FTSE 100
- + OSE Nikkei 225

Bonds

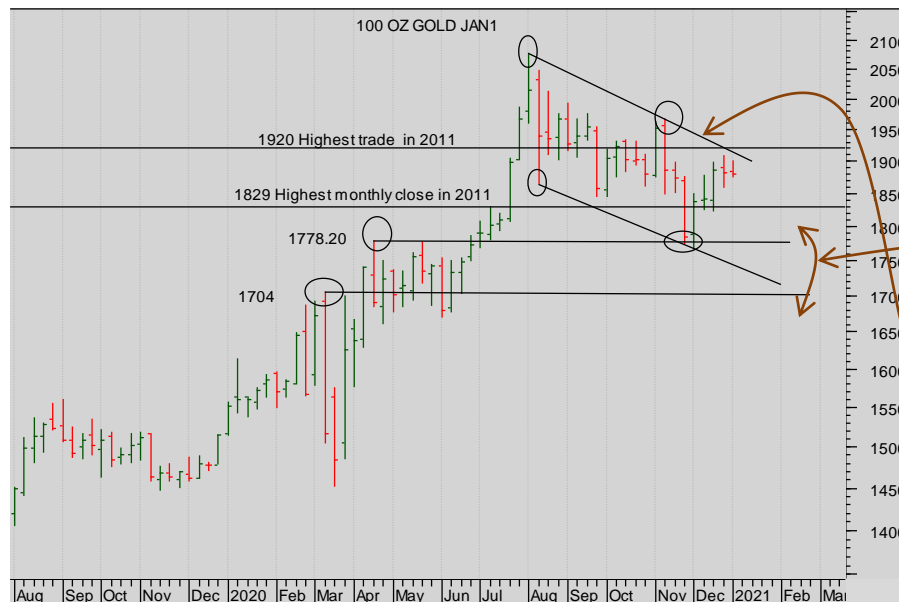
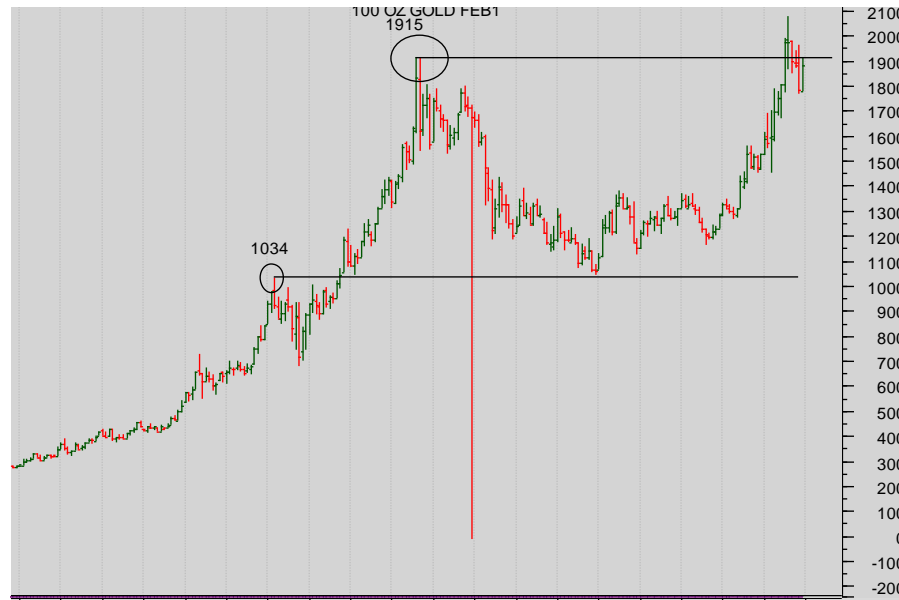
- + Ten Year US TNote
- + Ten Year German Bund
- + UK Gilt

Commodities

- + Oil
- + Gold

IMPLIED ASSET ALLOCATION

Commodities: Comex Gold



Nymex Gold Monthly

Will the pause at the Prior High resolve itself into

- a reversal pattern or
- a continuation pattern?

Nymex Gold weekly

In the weekly chart the weekly supports at 1704 and 1778 are a band of support...

There is a possible flag or continuation wedge pattern developing?

Watch the upper diagonal closely.



Commodities: Comex Gold

Summary

Currencies

- + Dollar Euro
- + Dollar Sterling
- + Dollar Yen
- + Sterling Euro

Stocks

- + S&P 500
- + EuroStoxx 50
- + FTSE 100
- + Nikkei 225

Bonds

- + Ten Year US TNote
- + Ten Year German Bund
- + UK Gilt

Commodities

- + Oil
- + Gold

IMPLIED ASSET ALLOCATION



Nymex Gold Dec 2020 Daily

The support from Prior Highs has held.

Stand back.



Summary

Summary

Currencies

- + Dollar Euro
- + Dollar Sterling
- + Dollar Yen
- + Sterling Euro

Stocks

- + S&P 500
- + EuroStoxx 50
- + FTSE 100
- + Nikkei 225

Bonds

- + Ten Year US TNote
- + Ten Year German Bund
- + UK Gilt

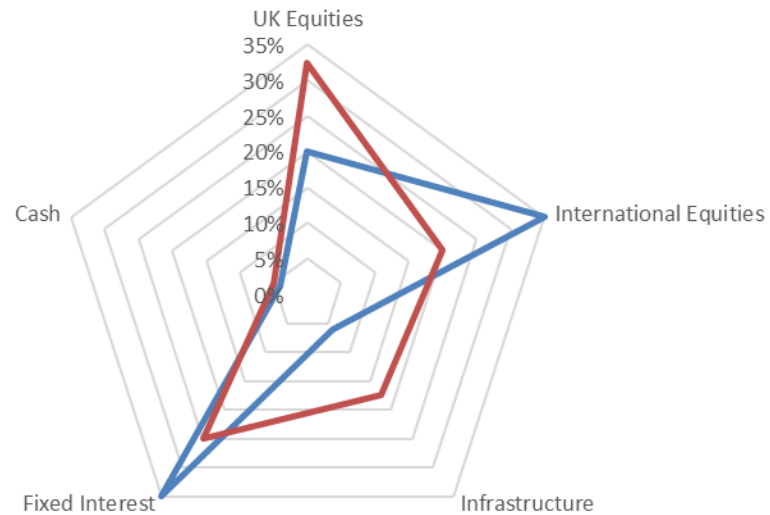
Commodities

- + Oil
- + Gold

Seven Days Ahead Balanced Risk IMPLIED Asset Allocation

v

MSCI Balanced Risk Asset Allocation



More



the technical analyst

AWARDS 2012

FINALIST BEST INDEPENDENT RESEARCH HOUSE

The material and information set out in this research is not intended to be a quote of an offer to buy or sell any financial products. Any expression of opinion is based on sources believed to be reasonably reliable but is not guaranteed as to accuracy or completeness.

The material and information herein is general and for informational purposes only. Although Seven Days Ahead endeavours to provide useful information they make no guarantee as to the accuracy or reliability of the research.

The derivative market comprises volatility and considerable risks. To the maximum extent permitted by law no responsibility or liability can be accepted by Seven Days Ahead, any company or employee within its group for any action taken as a result of the information contained in this presentation. You are requested not to rely on any representation in this research and to seek specific advice from your accountant, legal adviser or financial services adviser when dealing with specific circumstances.

Seven Days Ahead is regulated by the UK Financial Conduct Authority.

[Back to main menu](#)