



the technical analyst

AWARDS 2012

FINALIST BEST INDEPENDENT RESEARCH HOUSE

Summary

Currencies

- + Dollar Euro
- + Dollar Sterling
- + Dollar Yen
- + Sterling Euro

Stocks

- + S&P 500
- + EuroStoxx 50
- + FTSE 100
- + Nikkei 225

Bonds

- + Ten Year US TNote
- + Ten Year German Bund
- + UK Gilt

Commodities

- + Oil
- + Gold

IMPLIED ASSET ALLOCATION

Disclaimer



Multi-asset technical strategies

Week of 24th August 2021

Mark Sturdy

Authorised and regulated
by the FCA



summary

Very powerful signals arise when the charts of any one asset are aligned in all three time frames - see highlights

Summary

Currencies

- + Dollar Euro
- + Dollar Sterling
- + Dollar Yen
- + Sterling Euro

Long-term **BEAR** Euro
Long-term **BEAR** Sterling
Long-term **BEAR** Yen
Long-term FLAT Euro

Medium-term **BEAR** Euro
Medium-term **BEAR** Sterling
Medium-term **BEAR** Yen
Medium-term **BEAR** Euro

Short-term FLAT Euro
Short-term FLAT Sterling
Short-term **BULL** Yen
Short-term FLAT Euro

Stocks

- + S&P 500
- + EuroStoxx 50
- + FTSE 100
- + Nikkei 225

Long-term **BULL**
Long-term **BULL**
Long-term FLAT
Long-term **BULL**

Medium-term **BULL**
Medium-term **BULL**
Medium-term **BULL**
Medium-term **BULL**

Short-term **BULL**
Short-term **BULL**
Short-term FLAT
Short-term **BULL**

Bonds

- + Ten Year yield US TNote
- + Ten Year yield German Bund
- + Ten Year yield UK Gilt

Long-term FLAT
Long-term **BULL**
Long-term **BULL**

Medium-term FLAT
Medium-term FLAT
Medium-term FLAT

Short-term **BEAR**
Short-term **BEAR**
Short-term **BEAR**

Commodities

- + Oil
- + Gold

Long-term FLAT
Long-term FLAT

Medium-term FLAT
Medium-term **BULL**

Short-term **BEAR**
Short-term FLAT

IMPLIED ASSET ALLOCATION

More



Currencies: Dollar Euro

CURRENCIES:

The Dollar looks strong against the Euro – the market is set to drive further there with a completed H&S pattern. But Sterling is less weak for the moment. The Yen is unclear.

Summary

Currencies

- + Dollar Euro
- + Dollar Sterling
- + Dollar Yen
- + Sterling Euro

Stocks

- + S&P 500
- + EuroStoxx 50
- + FTSE 100
- + Nikkei 225

Bonds

- + Ten Year US TNote
- + Ten Year German Bund
- + UK Gilt

Commodities

- + Oil
- + Gold

IMPLIED ASSET ALLOCATION



Dollar Euro monthly spot cash chart

These powerful resistances above the market at 1.15 have been deeply penetrated

1. As a result, the market has broken the DIAGONAL strengthening Dollar trend from 2008.
2. But there is no weakening Dollar trend in place **until a break up through THE HORIZONTAL RESISTANCES UP TO 1.24.**

More



Currencies: Dollar Euro

Summary

Currencies

- + Dollar Euro
- + Dollar Sterling
- + Dollar Yen
- + Sterling Euro

Stocks

- + S&P 500
- + EuroStoxx 50
- + FTSE 100
- + Nikkei 225

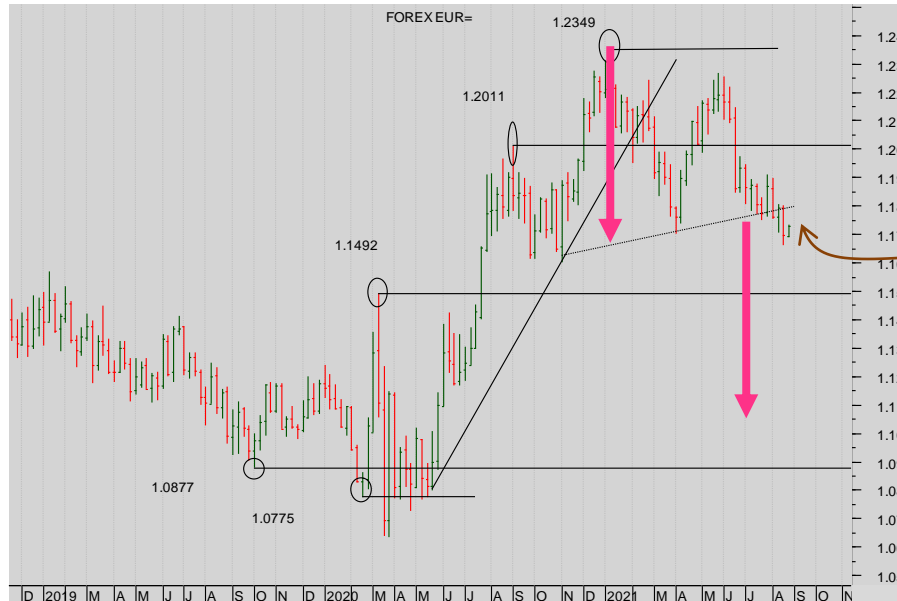
Bonds

- + Ten Year US TNote
- + Ten Year German Bund
- + UK Gilt

Commodities

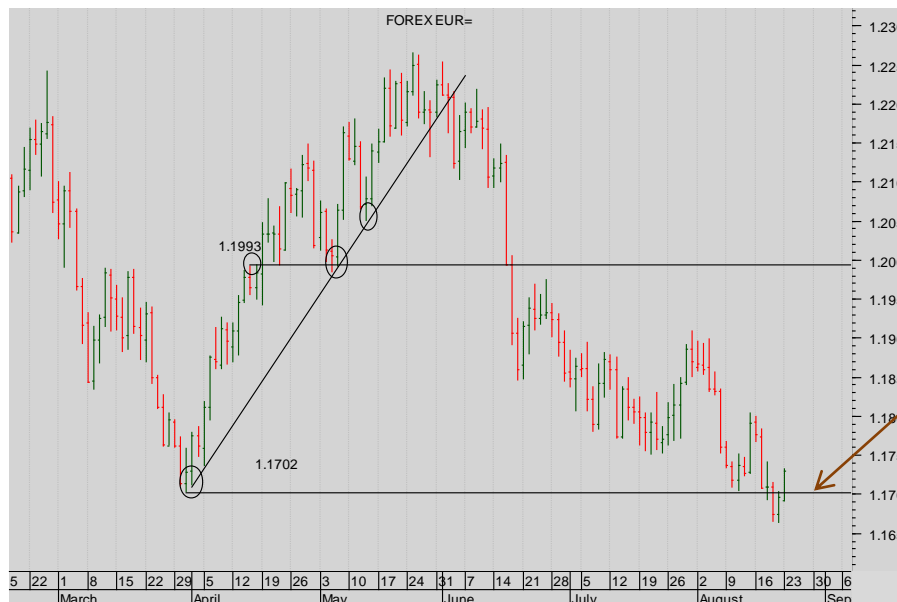
- + Oil
- + Gold

IMPLIED ASSET ALLOCATION



Dollar Euro weekly spot cash chart

Medium-term, this looks like a H&S top... minimum move? Down as far as 1.11 minimum.



Dollar Euro spot cash chart daily chart...

But the short-term trigger for selling the Euro should be a breakdown through the Prior Low of 1.1702 in the day chart.

Wait for that.



Currencies: Dollar Sterling

Summary

Currencies

- + Dollar Euro
- + Dollar Sterling
- + Dollar Yen
- + Sterling Euro

Stocks

- + S&P 500
- + EuroStoxx 50
- + FTSE 100
- + Nikkei 225

Bonds

- + Ten Year US TNote
- + Ten Year German Bund
- + UK Gilt

Commodities

- + Oil
- + Gold

IMPLIED ASSET ALLOCATION



Dollar Sterling Monthly spot cash chart

The sideways price action beneath 1.35 broke the diagonal Sterling downtrend resistance and forged ahead.

But note that the horizontal resistances the market ... have not yet been breached.

The Sterling bulls need a break above the Prior High @1.4376.



Dollar Sterling Monthly spot cash LINE CHART based on closes

Note the simultaneous completion of a BULL H&S (double headed) reversal pattern and the breaking of the DIAGONAL downtrend resistance...

The minimum move suggested is up to the 1.4240 Prior Low and Horizontal resistance .

That has been **achieved**.

Note well that a break of 1.42 would complete a Double Bottom reversal and **send the market higher still**. **BUT FOR THE MOMENT THE RESISTANCE THERE IS INTACT**

More



Summary

Currencies

- + Dollar Euro
- + Dollar Sterling
- + Dollar Yen
- + Sterling Euro

Stocks

- + S&P 500
- + EuroStoxx 50
- + FTSE 100
- + Nikkei 225

Bonds

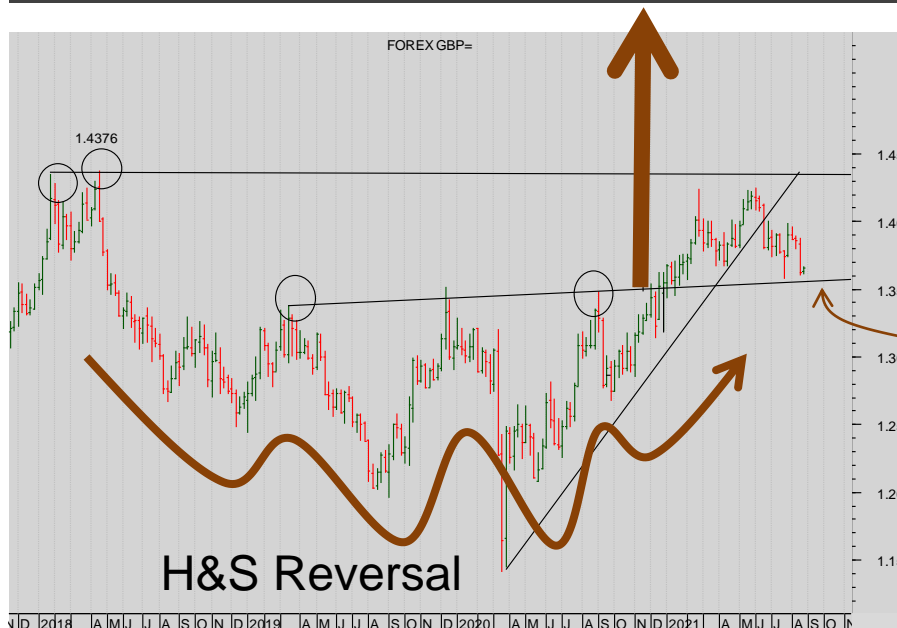
- + Ten Year US TNote
- + Ten Year German Bund
- + UK Gilt

Commodities

- + Oil
- + Gold

IMPLIED ASSET ALLOCATION

Currencies: Dollar Sterling



Dollar Sterling weekly spot cash chart

Here is the detail of the complex bull H&S reversal that is driving Sterling better. The Minimum move? About 1.50....

In the meantime the support is the Neckline at 1.36 or so...



Dollar Sterling daily spot cash chart

Watch the line of support from the Prior highs beneath the market at 1.3482.



Currencies: Dollar Yen

Summary

Currencies

- + Dollar Euro
- + Dollar Sterling
- + Dollar Yen
- + Sterling Euro

Stocks

- + S&P 500
- + EuroStoxx 50
- + FTSE 100
- + Nikkei 225

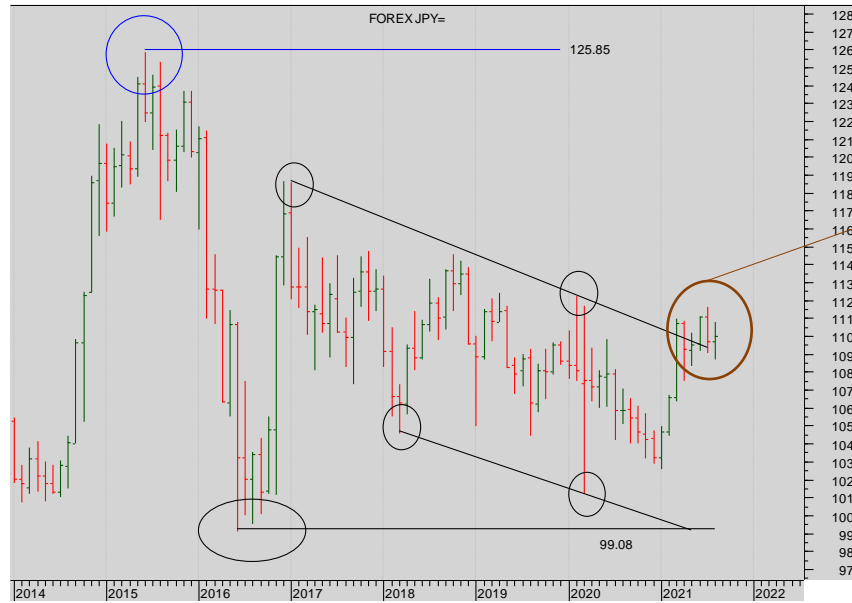
Bonds

- + Ten Year US TNote
- + Ten Year German Bund
- + UK Gilt

Commodities

- + Oil
- + Gold

IMPLIED ASSET ALLOCATION



Dollar Yen monthly spot cash chart

The bull falling wedge COMPLETED?

The Dollar bulls had a completion of the wedge to gain momentum **but the market is dithering still.**
- it's unclear.



Dollar Yen weekly spot cash chart

Not clear, stand back!
A successful push beyond the 110.96 High is a prerequisite for the monthly chart to get going and confirm a completed bull wedge.

More



Currencies: Dollar Yen



Dollar Yen daily spot cash chart

The Dollar failed to get and stay above 110.96....

Stand aside.

Summary

Currencies

- + Dollar Euro
- + Dollar Sterling
- + Dollar Yen
- + Sterling Euro

Stocks

- + S&P 500
- + EuroStoxx 50
- + FTSE 100
- + Nikkei 225

Bonds

- + Ten Year US TNote
- + Ten Year German Bund
- + UK Gilt

Commodities

- + Oil
- + Gold

IMPLIED ASSET ALLOCATION



Summary

Currencies

- + Dollar Euro
- + Dollar Sterling
- + Dollar Yen
- + Sterling Euro

Stocks

- + S&P 500
- + EuroStoxx 50
- + FTSE 100
- + Nikkei 225

Bonds

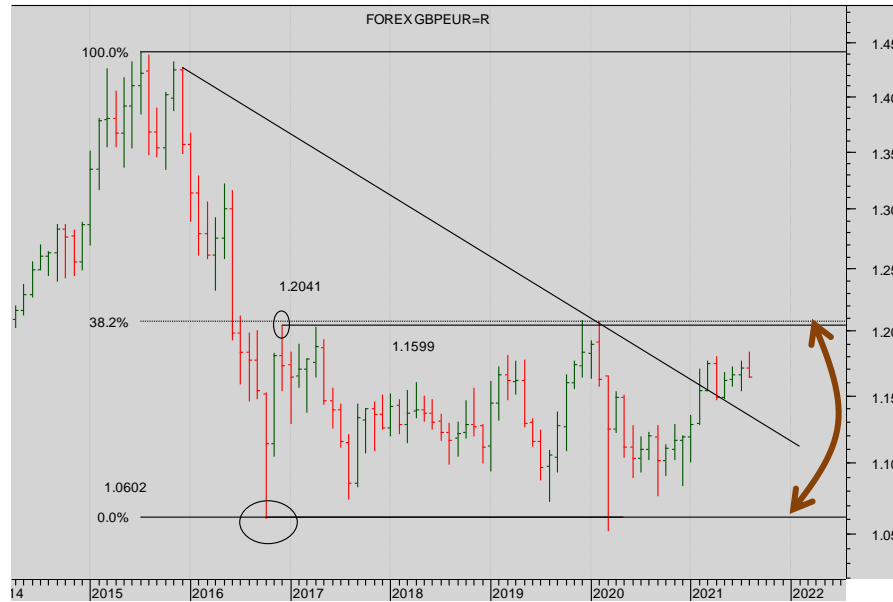
- + Ten Year US TNote
- + Ten Year German Bund
- + UK Gilt

Commodities

- + Oil
- + Gold

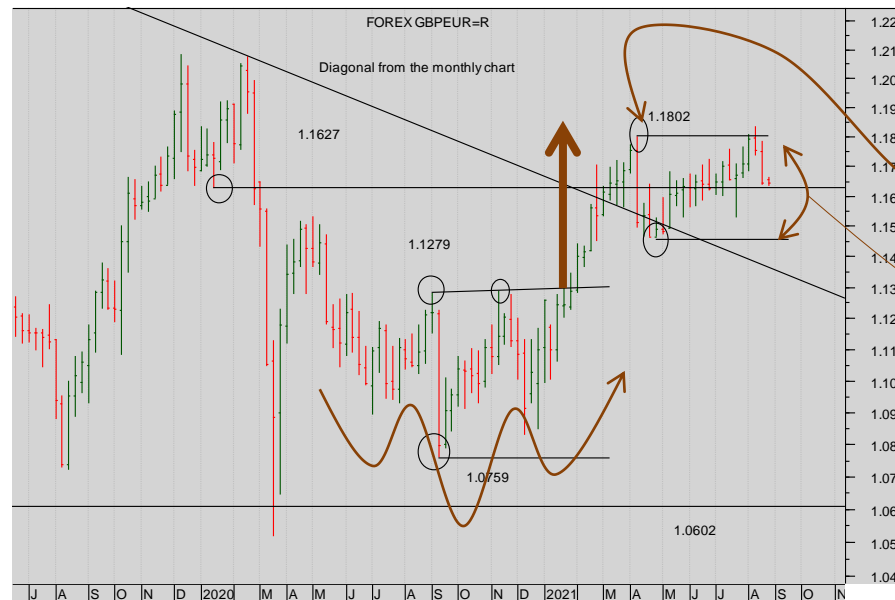
IMPLIED ASSET ALLOCATION

Currencies: Sterling Euro



Sterling Euro monthly spot cash chart

The market remains in the broad trading range.



Sterling Euro weekly spot cash chart

We thought there was more to go for Sterling but the recent **Weekly Key reversal** should be worrying for the bulls.

Stand aside. Wait for a break of the small range.

More



Summary

Currencies

- + Dollar Euro
- + Dollar Sterling
- + Dollar Yen
- + Sterling Euro

Stocks

- + S&P 500
- + EuroStoxx 50
- + FTSE 100
- + Nikkei 225

Bonds

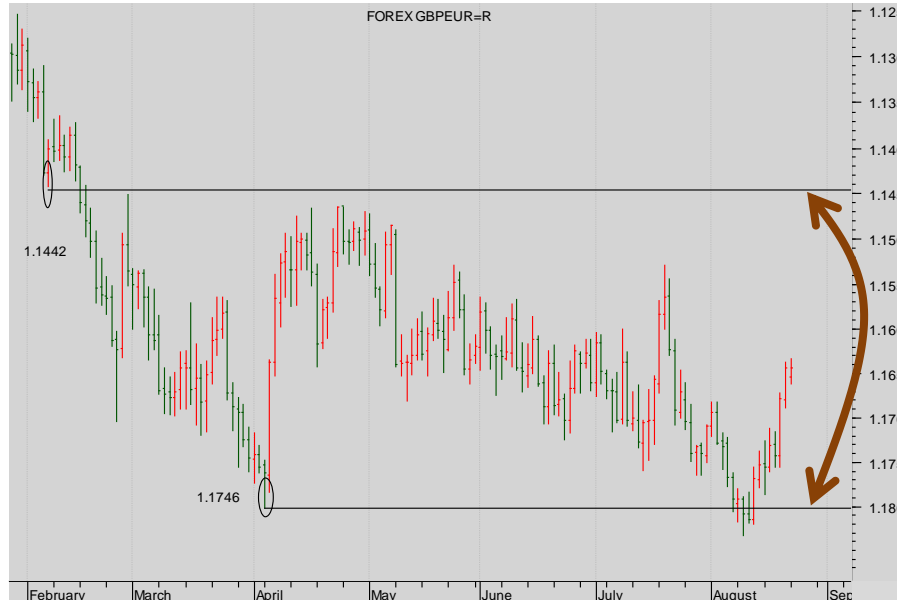
- + Ten Year US TNote
- + Ten Year German Bund
- + UK Gilt

Commodities

- + Oil
- + Gold

IMPLIED ASSET ALLOCATION

Currencies: Sterling Euro



Sterling Euro daily spot cash chart

The opportunity to break the small range was spurned.

Stand back and watch the range.



Stocks: CME S&P

STOCKS:

We remain fierce advocates for the continued bullishness of the S&P and the Eurostoxx. Others we are less sure about, FTSE remains a laggard. The Nikkei is testing support and close to a fresh sell signal.

Summary

Currencies

- + Dollar Euro
- + Dollar Sterling
- + Dollar Yen
- + Sterling Euro

Stocks

- + S&P 500
- + EuroStoxx 50
- + FTSE 100
- + Nikkei 225

Bonds

- + Ten Year US TNote
- + Ten Year German Bund
- + UK Gilt

Commodities

- + Oil
- + Gold

IMPLIED ASSET ALLOCATION



CME S&P 500 monthly cont. futures chart

The market has driven above the Old high of 3397 – so the the next bull leg has begun.

First support now at 3397.50

More



Stocks: CME S&P 500

Summary

Currencies

- + Dollar Euro
- + Dollar Sterling
- + Dollar Yen
- + Sterling Euro

Stocks

- + S&P 500
- + EuroStoxx 50
- + FTSE 100
- + Nikkei 225

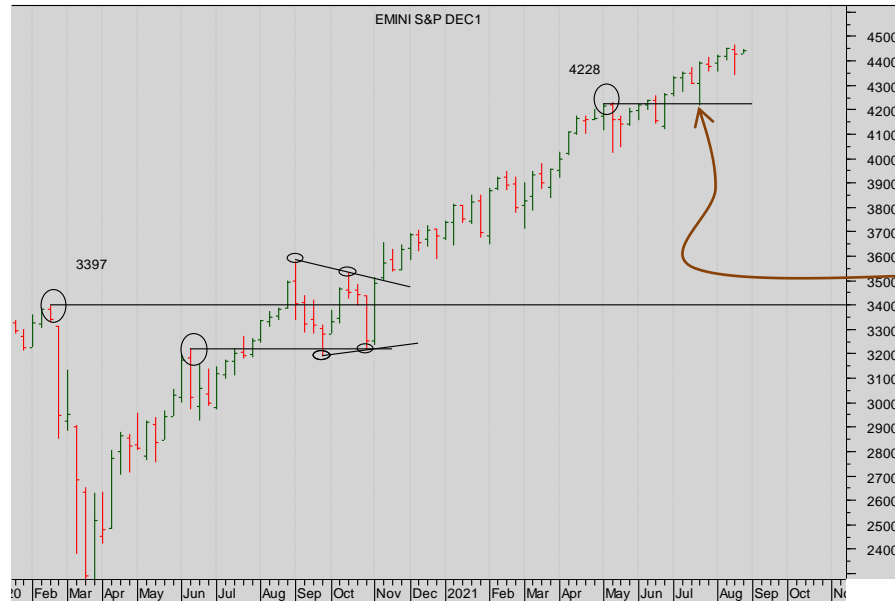
Bonds

- + Ten Year US TNote
- + Ten Year German Bund
- + UK Gilt

Commodities

- + Oil
- + Gold

IMPLIED ASSET ALLOCATION

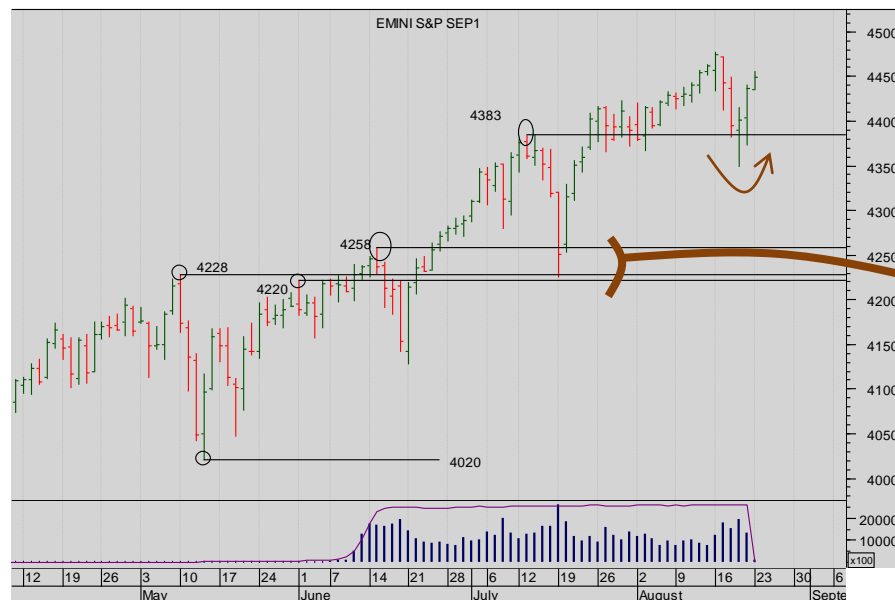


CME S&P 500 cont. weekly cont. chart

The weekly Key Reversal was a **false signal**.

And note the recent bounce off the Prior High of 4228.

The market looks well set-up.



CME S&P 500 daily Sep 2021 chart

Note the very recent breakup through and then bounce off the Prior Highs now **underpins the market**.

This bounce was very bullish.

More



Summary

Currencies

- + Dollar Euro
- + Dollar Sterling
- + Dollar Yen
- + Sterling Euro

Stocks

- + S&P 500
- + EuroStoxx 50
- + FTSE 100
- + Nikkei 225

Bonds

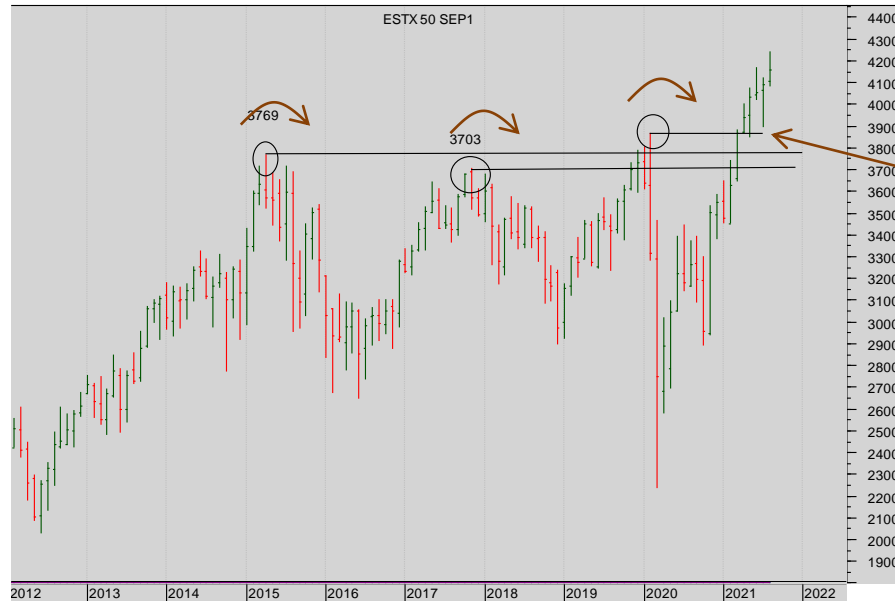
- + Ten Year US TNote
- + Ten Year German Bund
- + UK Gilt

Commodities

- + Oil
- + Gold

IMPLIED ASSET ALLOCATION

Stocks: Eurex EuroStoxx 50

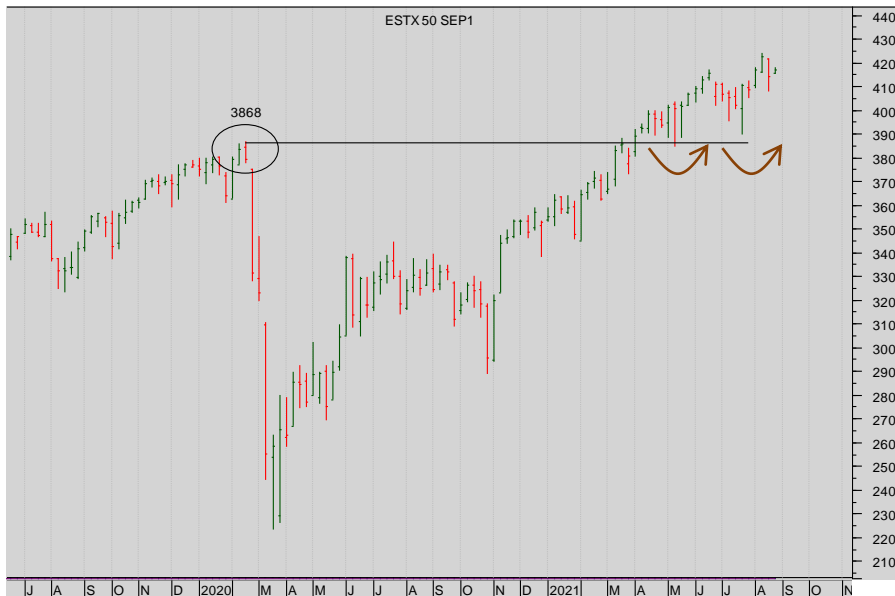


Eurex EuroStoxx 50 monthly continuation futures chart

The market has now broken out
Note the most recent monthly close above 3868.

Prior Highs establish powerful support beneath the market and so sets up **the next bull leg.**

This is a very bullish pattern.



Eurex EuroStoxx 50 weekly Sep 21 futures chart

First obvious support at 3868 from which the market has bounced twice.

It's very bullish.

More



Stocks: Eurex EuroStoxx 50



Eurex EuroStoxx 50 daily Sep 21 futures chart

This is more complex: the attempt in July to break down failed. But the prior highs are not powerfully structuring the market. There is a good deal of price volatility which means it is not easy to time the entry and exit to markets.

Summary

Currencies

- + Dollar Euro
- + Dollar Sterling
- + Dollar Yen
- + Sterling Euro

Stocks

- + S&P 500
- + EuroStoxx 50
- + FTSE 100
- + Nikkei 225

Bonds

- + Ten Year US TNote
- + Ten Year German Bund
- + UK Gilt

Commodities

- + Oil
- + Gold

IMPLIED ASSET ALLOCATION



Summary

Currencies

- + Dollar Euro
- + Dollar Sterling
- + Dollar Yen
- + Sterling Euro

Stocks

- + S&P 500
- + EuroStoxx 50
- + **FTSE 100**
- + Nikkei 225

Bonds

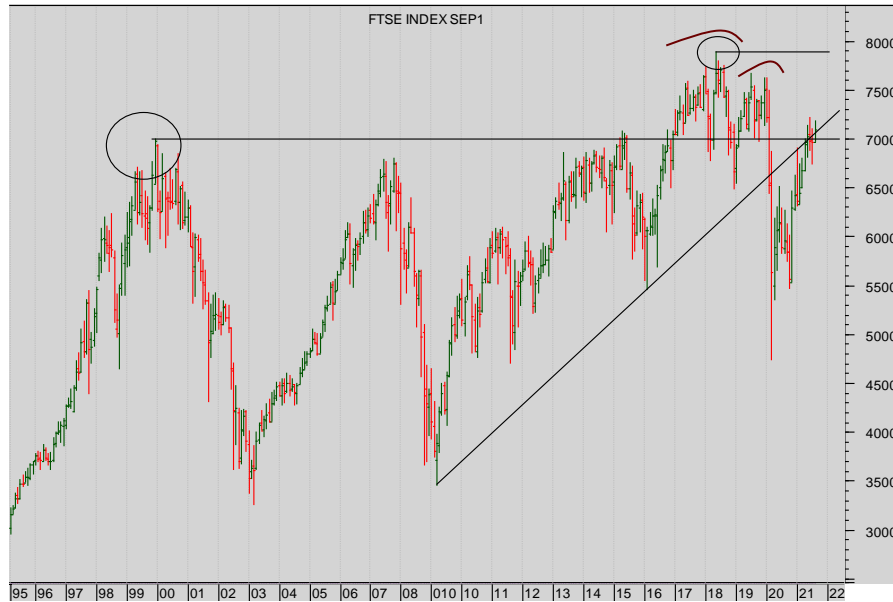
- + Ten Year US TNote
- + Ten Year German Bund
- + UK Gilt

Commodities

- + Oil
- + Gold

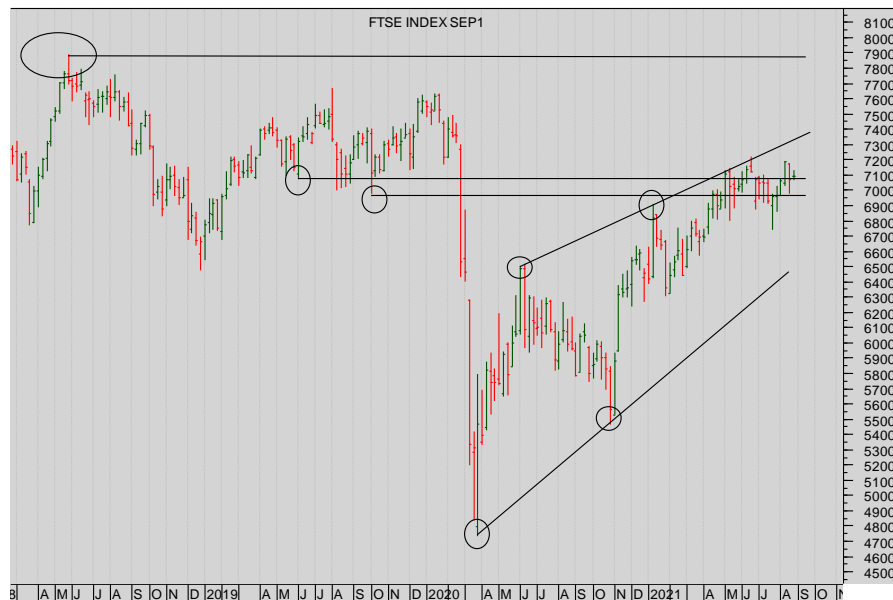
IMPLIED ASSET ALLOCATION

Stocks: Liffe FTSE 100



Liffe FTSE 100 Monthly continuation futures chart

The market bounced into the massive overhead resistance above the market at 6475 but so far **has been unable to break up through those levels.**



Liffe FTSE 100 Weekly cont. futures chart

The market has re-penetrated the band of resistance from the Prior Lows.

The bulls are poised to break through the recent Prior High at about 7200. BUT THEY HAVEN'T DONE IT YET.

Look more closely.

More



Stocks: Liffe FTSE 100

Summary

Currencies

- + Dollar Euro
- + Dollar Sterling
- + Dollar Yen
- + Sterling Euro

Stocks

- + S&P 500
- + EuroStoxx 50
- + FTSE 100
- + Nikkei 225

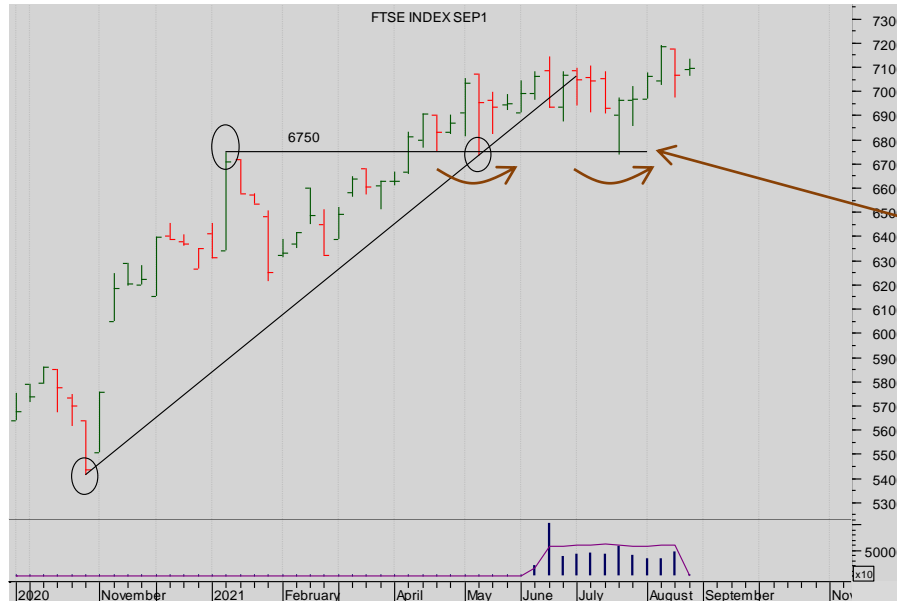
Bonds

- + Ten Year US TNote
- + Ten Year German Bund
- + UK Gilt

Commodities

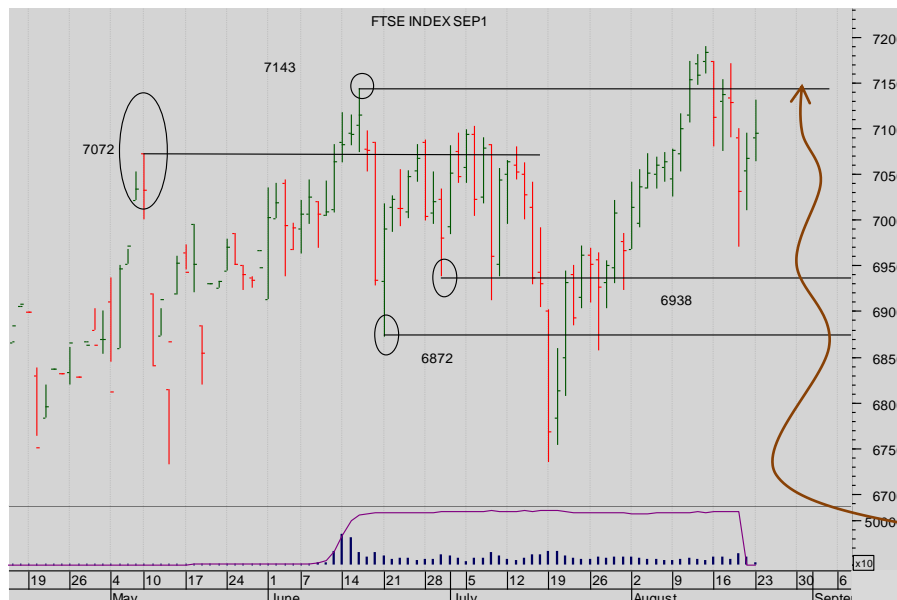
- + Oil
- + Gold

IMPLIED ASSET ALLOCATION



Liffe FTSE 100 **Sep 21** weekly futures chart

This looks good - the successive bounces off the 6750 Prior High are very **impressive** AND **BULLISH**.



Liffe FTSE 100 **Sep 21** daily futures chart

Note that in this short-term day chart, the push beneath the Prior Lows was not sustained.

The bounce up through the band of resistance from those lows was **impressive!**

But the market has not established itself above 7143. Wait for a confirmed break of the 7143 High.



Summary

Currencies

- + Dollar Euro
- + Dollar Sterling
- + Dollar Yen
- + Sterling Euro

Stocks

- + S&P 500
- + EuroStoxx 50
- + FTSE 100
- + Nikkei 225

Bonds

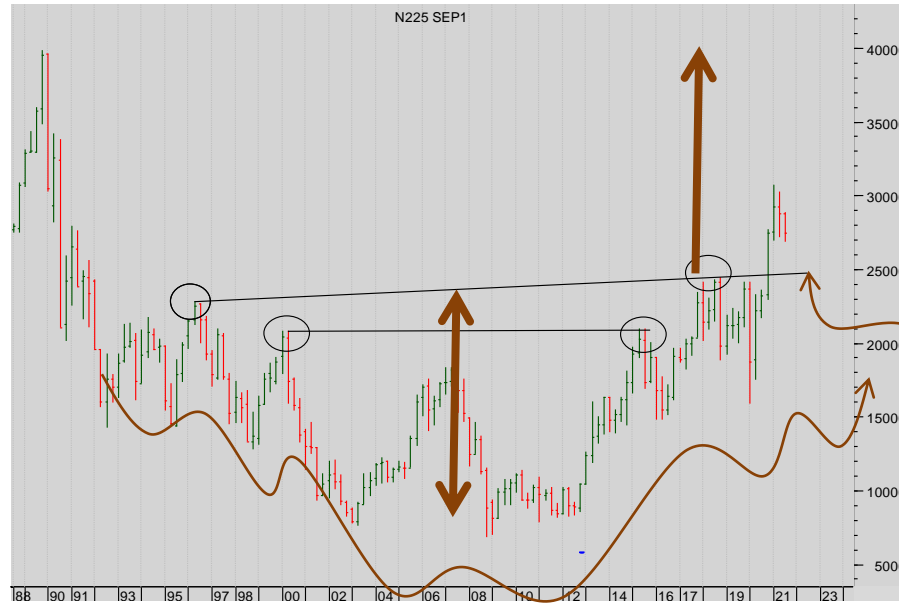
- + Ten Year US TNote
- + Ten Year German Bund
- + UK Gilt

Commodities

- + Oil
- + Gold

IMPLIED ASSET ALLOCATION

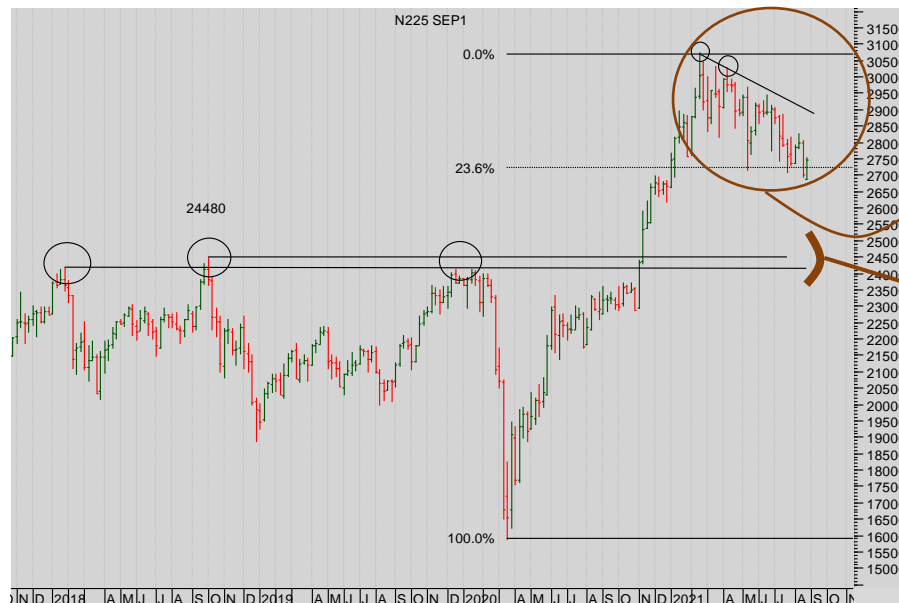
Stocks: OSE Nikkei 225



Nikkei 225 chart (Quarterly)

The market has completed a complex but identifiable Double Headed Head and Shoulders Reversal - a very large one - with a minimum move up to 40000 or so (measured on a linear chart.)

On any pull back the support lies beneath at the Neckline.



Nikkei 225 chart (WEEKLY)

The pause and pull-back since the beginning of the year is marked but does not reveal a clear reversal!

First important support at 24480

Look closer.

More



Summary

Currencies

- + Dollar Euro
- + Dollar Sterling
- + Dollar Yen
- + Sterling Euro

Stocks

- + S&P 500
- + EuroStoxx 50
- + FTSE 100
- + **Nikkei 225**

Bonds

- + Ten Year US TNote
- + Ten Year German Bund
- + UK Gilt

Commodities

- + Oil
- + Gold

IMPLIED ASSET ALLOCATION

Stocks: OSE Nikkei 225



Nikkei 225 chart Daily Sep 2021.

It's not clear.

Wait for a break of the range.



Bonds

BONDS:

We remain price bulls and yield bears of these markets - the short-term price charts are especially clear.

Summary

Currencies

- + Dollar Euro
- + Dollar Sterling
- + Dollar Yen
- + Sterling Euro

Stocks

- + S&P 500
- + EuroStoxx 50
- + FTSE 100
- + Nikkei 225

Bonds

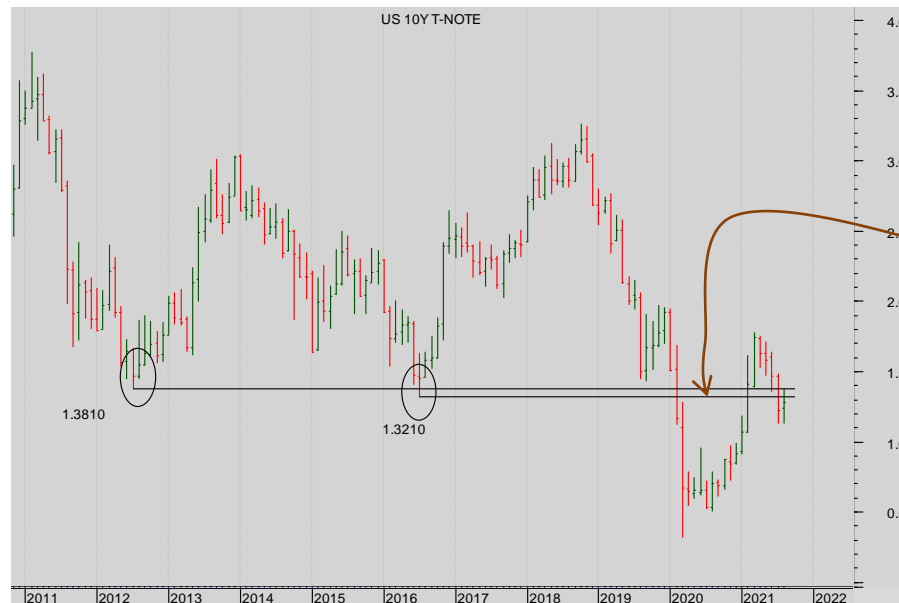
- + Ten Year US TNotes
- + Ten Year German Bund
- + UK Gilt

Commodities

- + Oil
- + Gold

IMPLIED ASSET ALLOCATION

Bonds: US Ten Year Notes (Yield)



US Ten Year Notes (Yield) monthly chart

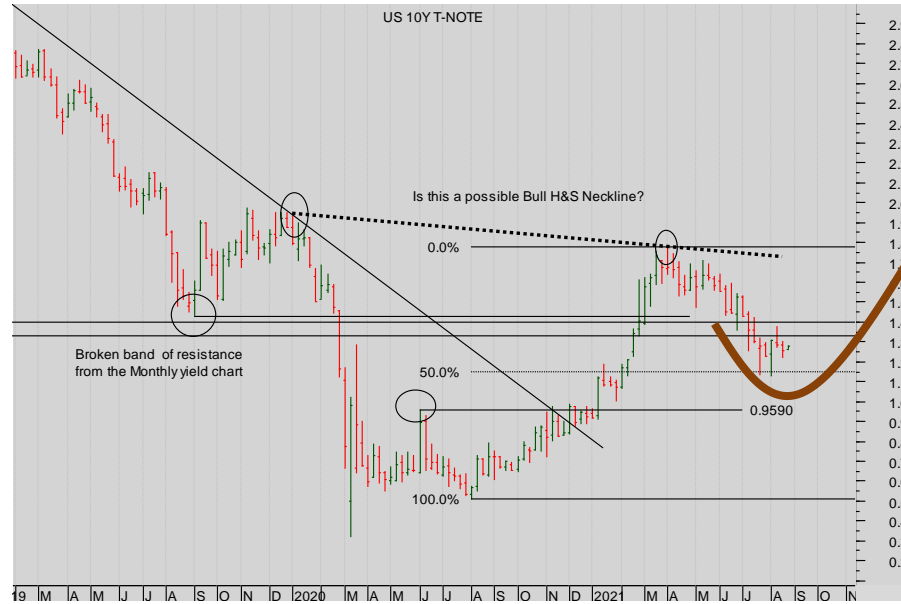
The market drove back up THROUGH that powerful resistance above the market at 1.32/8.

But the retracement back through that same level robs the chart of clarity

More



Bonds: US Ten Year Notes (Yield)



US Ten Year Notes (Yield) weekly chart

Note the retracement is to a Fibonacci 50% support from which the market has bounced.

Might that be the support that builds a second shoulder of a H&S bull pattern? We'll see. ...

Summary

Currencies

- + Dollar Euro
- + Dollar Sterling
- + Dollar Yen
- + Sterling Euro

Stocks

- + S&P 500
- + EuroStoxx 50
- + FTSE 100
- + Nikkei 225

Bonds

- + Ten Year US TNotes
- + Ten Year German Bund
- + UK Gilt

Commodities

- + Oil
- + Gold

IMPLIED ASSET ALLOCATION



US Ten Year Notes Sept 2021 Futures price daily chart

But short term, there is still a bull market in bonds, 133.20 Prior High looks to be important support ...

More



Summary

Currencies

- + Dollar Euro
- + Dollar Sterling
- + Dollar Yen
- + Sterling Euro

Stocks

- + S&P 500
- + EuroStoxx 50
- + FTSE 100
- + Nikkei 225

Bonds

- + Ten Year US TNote
- + Ten Year German Bund
- + UK Gilt

Commodities

- + Oil
- + Gold

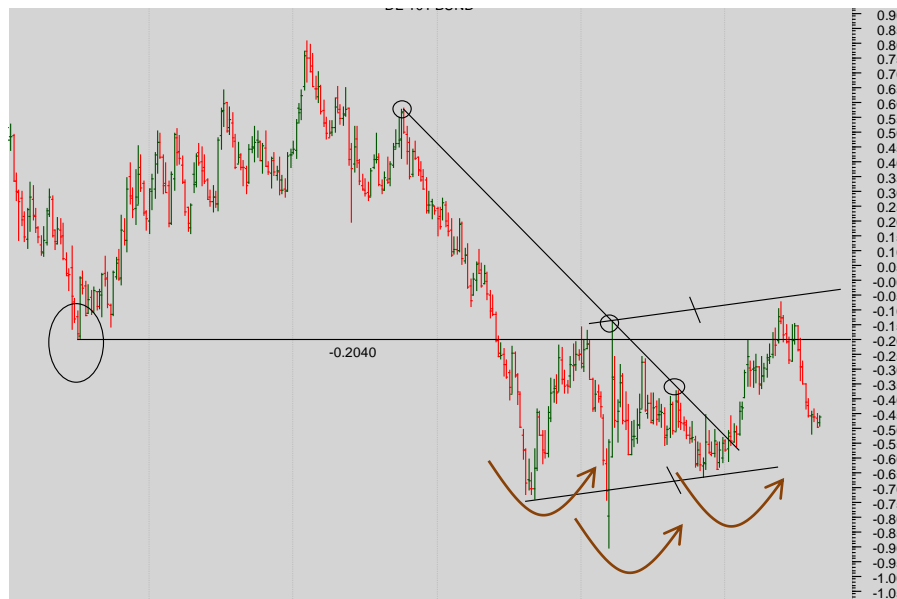
IMPLIED ASSET ALLOCATION

Bonds: German Bund yield chart



Bund monthly yield chart

This was a major penetration but there was no monthly close to establish a break of resistance at 0.204



Bund weekly yield chart

We had a confirmed **weekly** break of that resistance.

Note too that a Triple Bottom was completed. So we were yield bulls.

But now looks closely at the pull back – through Prior High support, back into a parallel trading range.

Stand back.

More



Bonds: German Bund yield chart



Bund daily Sep 21 futures price chart

The Bund price has developed a strong rally.

No weakness discernible there!

Watch the support at 176.28

Summary

Currencies

- + Dollar Euro
- + Dollar Sterling
- + Dollar Yen
- + Sterling Euro

Stocks

- + S&P 500
- + EuroStoxx 50
- + FTSE 100
- + Nikkei 225

Bonds

- + Ten Year US TNote
- + Ten Year German Bund
- + UK Gilt

Commodities

- + Oil
- + Gold

IMPLIED ASSET ALLOCATION



Bonds: UK Gilt yield chart



Gilt monthly yield chart

The market long-term bear trend.

We attacked the diagonal downtrend resistance but so far without convincing success.



Gilt weekly yield chart

The recent sideways drift and retracement opens the possibility of the creation of a second shoulder in a large bull H&S pattern....

But there's nothing there at the moment for the Yield bulls or Price bears to get hold of. (yet note the slight pause at the gap support ...)

Summary

Currencies

- + Dollar Euro
- + Dollar Sterling
- + Dollar Yen
- + Sterling Euro

Stocks

- + S&P 500
- + EuroStoxx 50
- + FTSE 100
- + Nikkei 225

Bonds

- + Ten Year US TNote
- + Ten Year German Bund
- + UK Gilt

Commodities

- + Oil
- + Gold

IMPLIED ASSET ALLOCATION

More



Summary

Currencies

- + Dollar Euro
- + Dollar Sterling
- + Dollar Yen
- + Sterling Euro

Stocks

- + S&P 500
- + EuroStoxx 50
- + FTSE 100
- + Nikkei 225

Bonds

- + Ten Year US TNote
- + Ten Year German Bund
- + UK Gilt

Commodities

- + Oil
- + Gold

IMPLIED ASSET ALLOCATION

Bonds: UK Gilt yield chart



Gilt daily Futures Sep 21 chart

Since May a short-term Price rally has developed, to be sure - but rather less convincing than the TNote and the Bund.

It's not clear.



Commodity

COMMODITIES:

Oil looks set to go further to the downside as there is now good resistance above that market now. Gold is clearly reluctant to go lower but bull need to wait for a clear signal before buying.

Summary

Currencies

- + Dollar Euro
- + Dollar Sterling
- + Dollar Yen
- + Sterling Euro

Stocks

- + S&P 500
- + EuroStoxx 50
- + FTSE 100
- + Nikkei 225

Bonds

- + Ten Year US TNote
- + Ten Year German Bund
- + UK Gilt

Commodities

- + Oil
- + Gold

IMPLIED ASSET ALLOCATION

Commodities: Nymex WTI Oil



Nymex oil quarterly continuation

Watch the approach to:

- (1) the falling diagonal above the market.
- (2) The Prior High at 76.72

The market has paused there.

More



Summary

Currencies

- + Dollar Euro
- + Dollar Sterling
- + Dollar Yen
- + Sterling Euro

Stocks

- + S&P 500
- + EuroStoxx 50
- + FTSE 100
- + Nikkei 225

Bonds

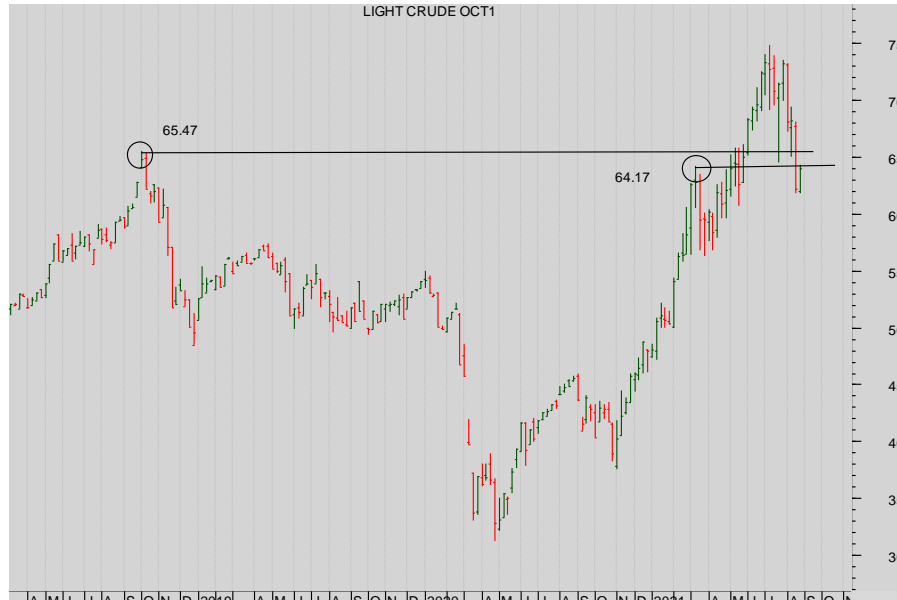
- + Ten Year US TNote
- + Ten Year German Bund
- + UK Gilt

Commodities

- + Oil
- + Gold

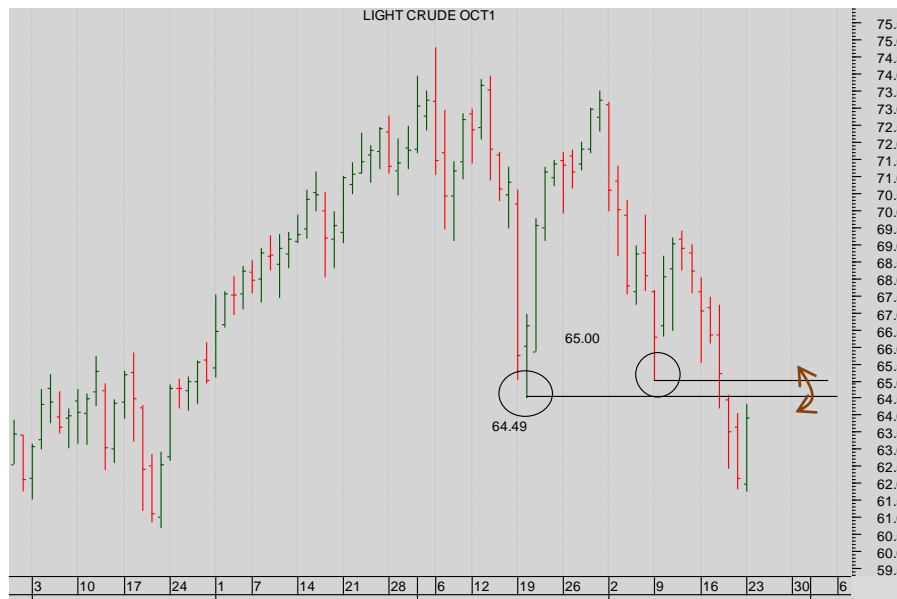
IMPLIED ASSET ALLOCATION

Commodities: Nymex WTI Oil



Nymex oil weekly Oct 2021

The market's retracement has smashed substantial support at the two Prior Highs at 65.



Nymex oil daily Oct 2021 futures

That retracement looks set up to be sold hard with the band of resistance from the two Prior Highs close above.



Summary

Currencies

- + Dollar Euro
- + Dollar Sterling
- + Dollar Yen
- + Sterling Euro

Stocks

- + S&P 500
- + EuroStoxx 50
- + FTSE 100
- + OSE Nikkei 225

Bonds

- + Ten Year US TNote
- + Ten Year German Bund
- + UK Gilt

Commodities

- + Oil
- + Gold

IMPLIED ASSET ALLOCATION

Commodities: Comex Gold



Nymex Gold Monthly

The dither at the Prior High was entirely predicatable.



Nymex Gold Oct 21 weekly

The support from the Prior High is impressive.



Commodities: Comex Gold

Summary

Currencies

- + Dollar Euro
- + Dollar Sterling
- + Dollar Yen
- + Sterling Euro

Stocks

- + S&P 500
- + EuroStoxx 50
- + FTSE 100
- + Nikkei 225

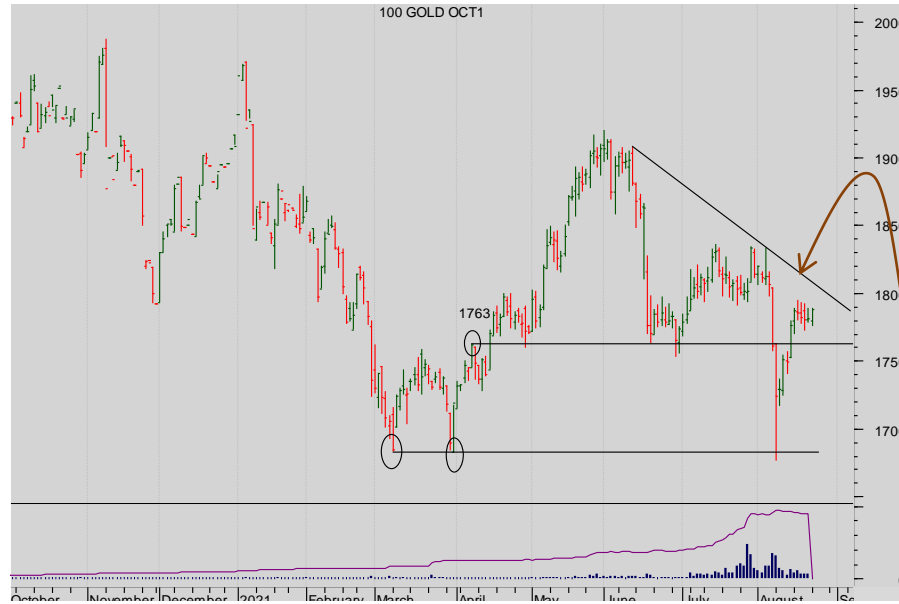
Bonds

- + Ten Year US TNote
- + Ten Year German Bund
- + UK Gilt

Commodities

- + Oil
- + Gold

IMPLIED ASSET ALLOCATION



Nymex Gold Aug 2021 Daily

We see the bounce where the market bounced from before, but bulls will want to the market break the falling diagonal before getting excited



Summary

Summary

Currencies

- + Dollar Euro
- + Dollar Sterling
- + Dollar Yen
- + Sterling Euro

Stocks

- + S&P 500
- + EuroStoxx 50
- + FTSE 100
- + Nikkei 225

Bonds

- + Ten Year US TNote
- + Ten Year German Bund
- + UK Gilt

Commodities

- + Oil
- + Gold

Seven Days Ahead Balanced Risk IMPLIED Asset Allocation

v

MSCI Balanced Risk Asset Allocation



More



the technical analyst

AWARDS 2012

FINALIST BEST INDEPENDENT RESEARCH HOUSE

The material and information set out in this research is not intended to be a quote of an offer to buy or sell any financial products. Any expression of opinion is based on sources believed to be reasonably reliable but is not guaranteed as to accuracy or completeness.

The material and information herein is general and for informational purposes only. Although Seven Days Ahead endeavours to provide useful information they make no guarantee as to the accuracy or reliability of the research.

The derivative market comprises volatility and considerable risks. To the maximum extent permitted by law no responsibility or liability can be accepted by Seven Days Ahead, any company or employee within its group for any action taken as a result of the information contained in this presentation. You are requested not to rely on any representation in this research and to seek specific advice from your accountant, legal adviser or financial services adviser when dealing with specific circumstances.

Seven Days Ahead is regulated by the UK Financial Conduct Authority.

[Back to main menu](#)