



Subscribe: 07849922573

msturdy@sevendaysahead.com

Sevendaysahead.com

Summary

Currencies

- + Dollar Euro
- + Dollar Sterling
- + Dollar Yen
- + Sterling Euro

Stocks

- + S&P 500
- + EuroStoxx 50
- + FTSE 100
- + Nikkei 225

Bonds

- + Ten Year US TNote
- + Ten Year German Bund
- + UK Gilt

Commodities

- + Oil
- + Gold

IMPLIED ASSET ALLOCATION

Disclaimer



Multi-asset technical strategies

Week of 11th October 2022

Mark Sturdy

Authorised and regulated
by the FCA



summary

Very powerful signals arise when the charts of any one asset are aligned in all three time frames - see highlights

Summary

Currencies

- + Dollar Euro
- + Dollar Sterling
- + Dollar Yen
- + Sterling Euro

Long-term BEAR Euro	Medium-term BEAR Euro	Short-term BEAR Euro
Long-term BEAR Sterling	Medium-term FLAT Sterling	Short-term FLAT Sterling
Long-term BEAR Yen	Medium-term BEAR Yen	Short-term BEAR Yen
Long-term FLAT Euro	Medium-term FLAT Euro	Short-term FLAT Euro

Stocks

- + S&P 500
- + EuroStoxx 50
- + FTSE 100
- + Nikkei 225

Long-term BEAR	Medium-term BEAR	Short-term BEAR
Long-term BEAR	Medium-term BEAR	Short-term FLAT
Long-term FLAT	Medium-term FLAT	Short-term FLAT
Long-term BULL	Medium-term FLAT	Short-term BEAR

Bonds

- + Ten Year yield US TNote
- + Ten Year yield German Bund
- + Ten Year yield UK Gilt

Long-term BULL	Medium-term BULL	Short-term BULL
Long-term BULL	Medium-term BULL	Short-term BULL
Long-term BULL	Medium-term FLAT	Short-term FLAT

Commodities

- + Oil
- + Gold

Long-term BULL	Medium-term FLAT	Short-term FLAT
Long-term BEAR	Medium-term BEAR	Short-term BEAR

IMPLIED ASSET ALLOCATION

More



Currencies: Dollar Euro

CURRENCIES:

Still the Dollar powers ahead against all currencies in most time frames: the acceleration of the weakening of Sterling was temporary but remains the direction of travel. Note again the relative solidity of the Sterling Euro cross rate.

Summary

Currencies

- + Dollar Euro
- + Dollar Sterling
- + Dollar Yen
- + Sterling Euro

Stocks

- + S&P 500
- + EuroStoxx 50
- + FTSE 100
- + Nikkei 225

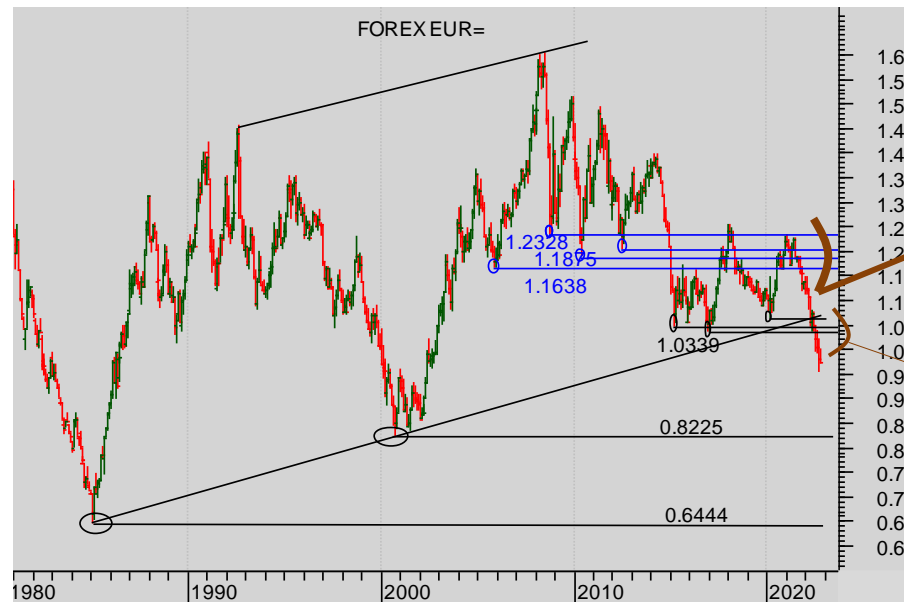
Bonds

- + Ten Year US TNote
- + Ten Year German Bund
- + UK Gilt

Commodities

- + Oil
- + Gold

IMPLIED ASSET ALLOCATION



Dollar Euro monthly spot cash chart

These powerful horizontal resistances have repelled the Euro bulls

Now the market has broken beneath the band 1.0339 - 1.1095 and at the same time has broken out of the bull channel

This is a major breakdown with very powerful resistance above at 1.04.

More



Summary

Currencies

- + Dollar Euro
- + Dollar Sterling
- + Dollar Yen
- + Sterling Euro

Stocks

- + S&P 500
- + EuroStoxx 50
- + FTSE 100
- + Nikkei 225

Bonds

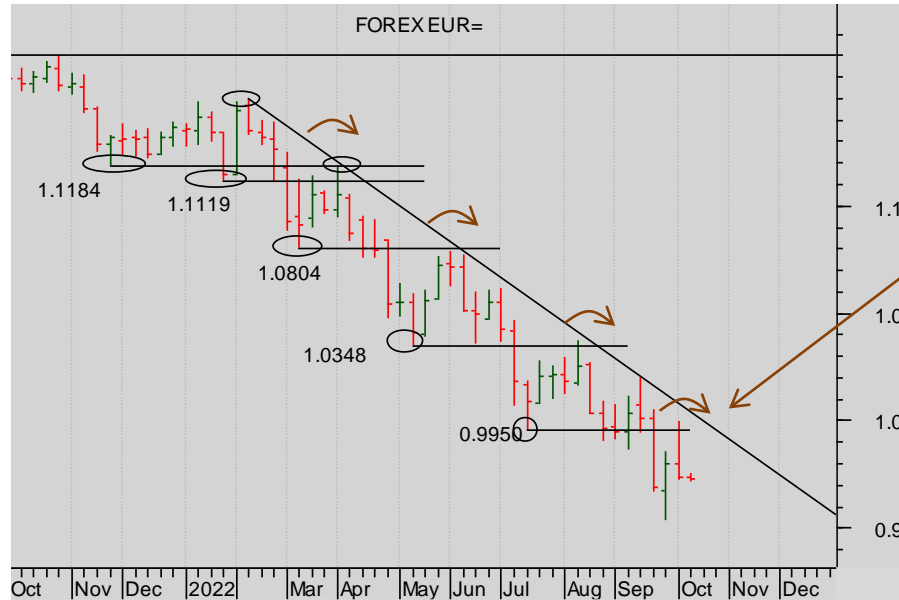
- + Ten Year US TNote
- + Ten Year German Bund
- + UK Gilt

Commodities

- + Oil
- + Gold

IMPLIED ASSET ALLOCATION

Currencies: Dollar Euro

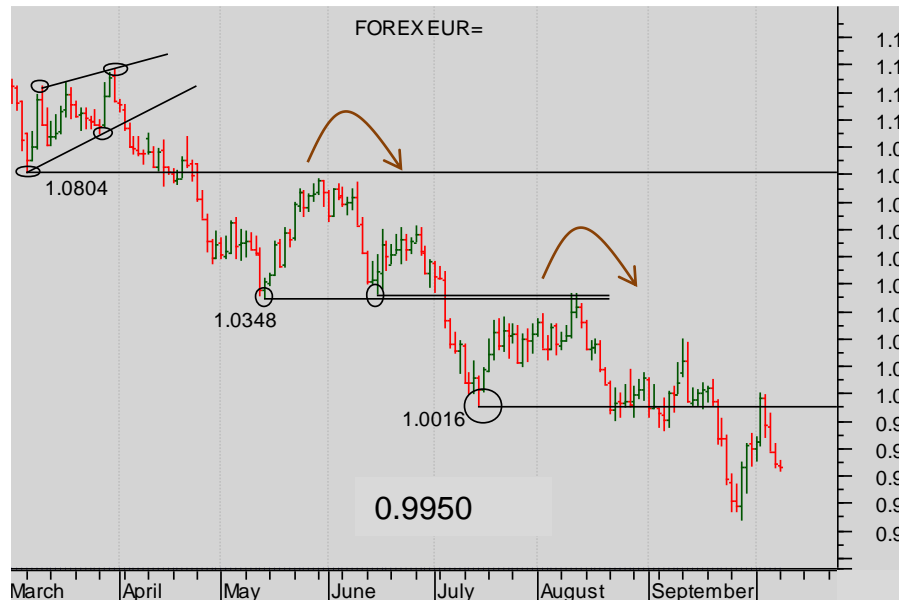


Dollar Euro weekly spot cash chart

This well-established bear trend.

Note how the market has failed successively to rally up through the Prior Lows resistance - ratcheting the trend still lower...

Add on the break beneath 0.9950



Dollar Euro spot cash chart daily chart...

In detail :

Successive Prior lows are driving the market lower.

The bears are in charge.



Summary

Currencies

- + Dollar Euro
- + Dollar Sterling
- + Dollar Yen
- + Sterling Euro

Stocks

- + S&P 500
- + EuroStoxx 50
- + FTSE 100
- + Nikkei 225

Bonds

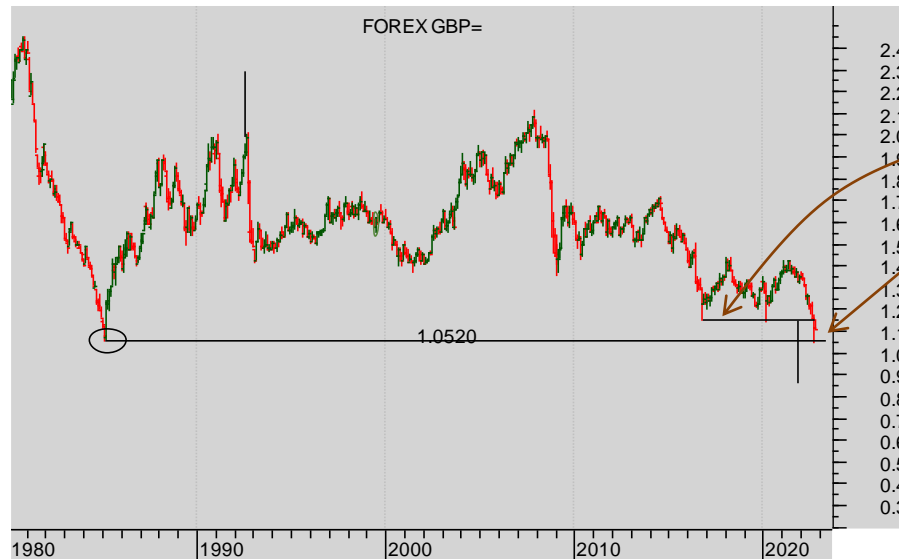
- + Ten Year US TNote
- + Ten Year German Bund
- + UK Gilt

Commodities

- + Oil
- + Gold

IMPLIED ASSET ALLOCATION

Currencies: Dollar Sterling

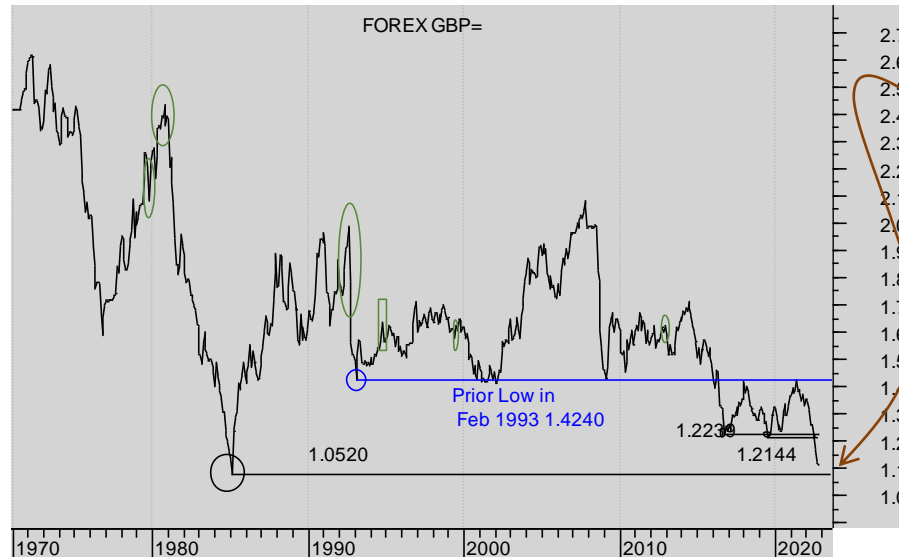


Dollar Sterling Monthly spot cash chart

The break beneath 1.1450 looks important.

But, equally, so is the low 1.0520....but that has yet to break.

Dollar Sterling Monthly spot cash LINE CHART based on closes



Now look for a confirmed break of the lows ...

the close at the end of the month was well above.

(If it had broken, the bears really would be in charge.)

More



Summary

Currencies

- + Dollar Euro
- + Dollar Sterling
- + Dollar Yen
- + Sterling Euro

Stocks

- + S&P 500
- + EuroStoxx 50
- + FTSE 100
- + Nikkei 225

Bonds

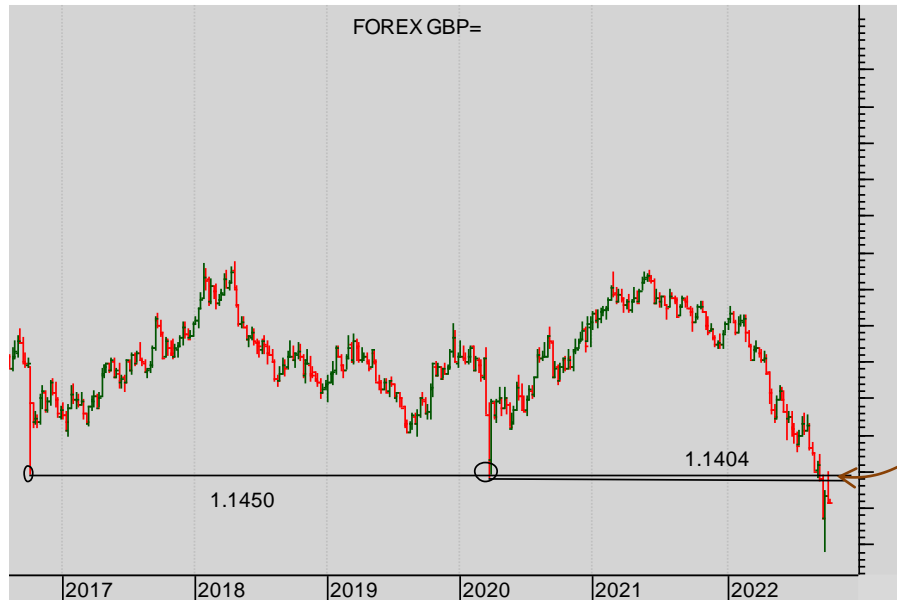
- + Ten Year US TNote
- + Ten Year German Bund
- + UK Gilt

Commodities

- + Oil
- + Gold

IMPLIED ASSET ALLOCATION

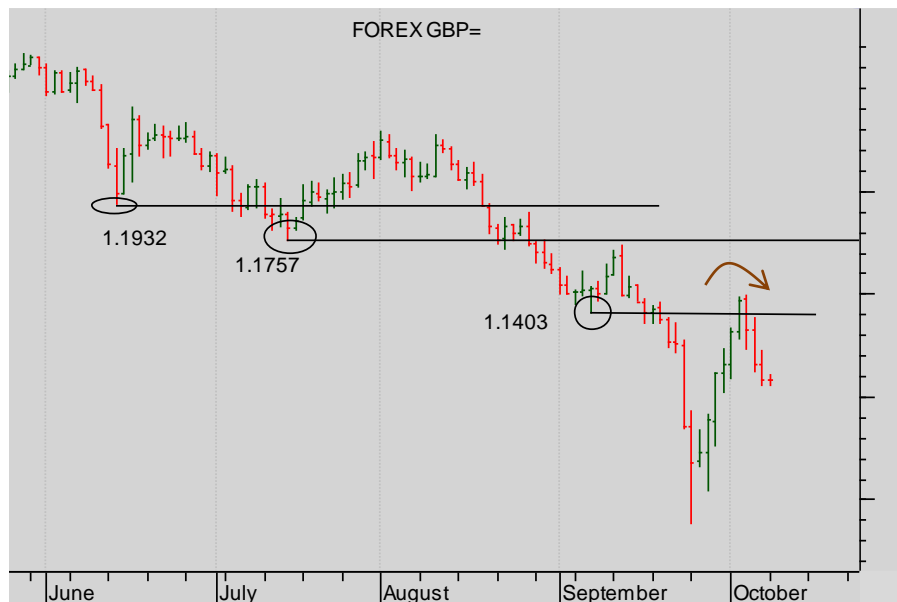
Currencies: Dollar Sterling



Dollar Sterling weekly spot cash chart

The medium-term bear trend is firmly in place.

Note NOW the importance of the Prior Low RESISTANCE at 1.1404.



Dollar Sterling daily spot cash chart

Short-term, there is a breakdown beneath the Prior Lows – establishing successive resistances above the market...



Currencies: Dollar Yen

Summary

Currencies

- + Dollar Euro
- + Dollar Sterling
- + Dollar Yen
- + Sterling Euro

Stocks

- + S&P 500
- + EuroStoxx 50
- + FTSE 100
- + Nikkei 225

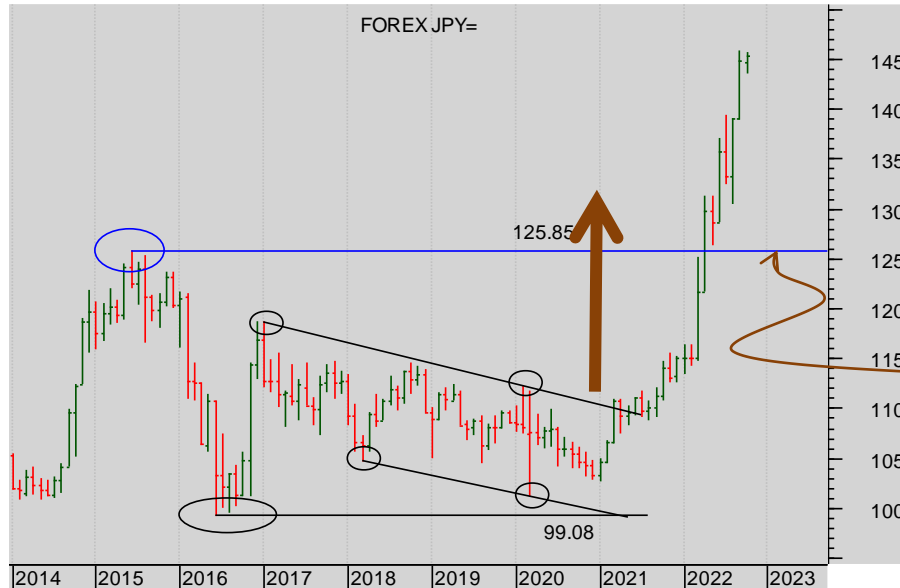
Bonds

- + Ten Year US TNote
- + Ten Year German Bund
- + UK Gilt

Commodities

- + Oil
- + Gold

IMPLIED ASSET ALLOCATION

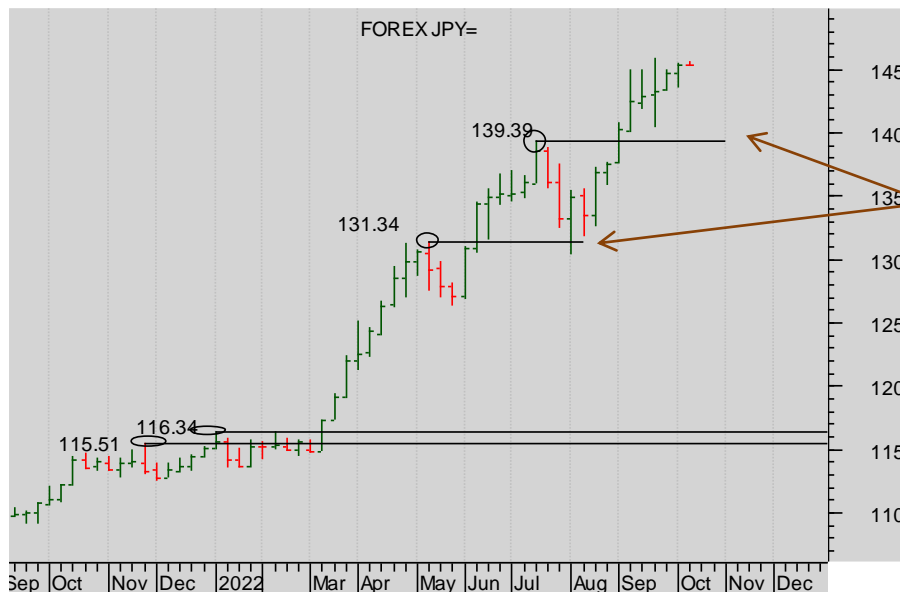


Dollar Yen monthly spot cash chart

The bull falling wedge continuation pattern COMPLETED in 2021 and encouraged the long-term Dollar bulls.

When the Yen weakened through the old 2015 high, that accelerated the trend

(and establishing good support beneath the market at 125.85)



Dollar Yen weekly spot cash chart

The recent pauses Created successive supports at 131.34 and 139.39.

The dollar Bulls are in full cry.

More



Summary

Currencies

- + Dollar Euro
- + Dollar Sterling
- + Dollar Yen
- + Sterling Euro

Stocks

- + S&P 500
- + EuroStoxx 50
- + FTSE 100
- + Nikkei 225

Bonds

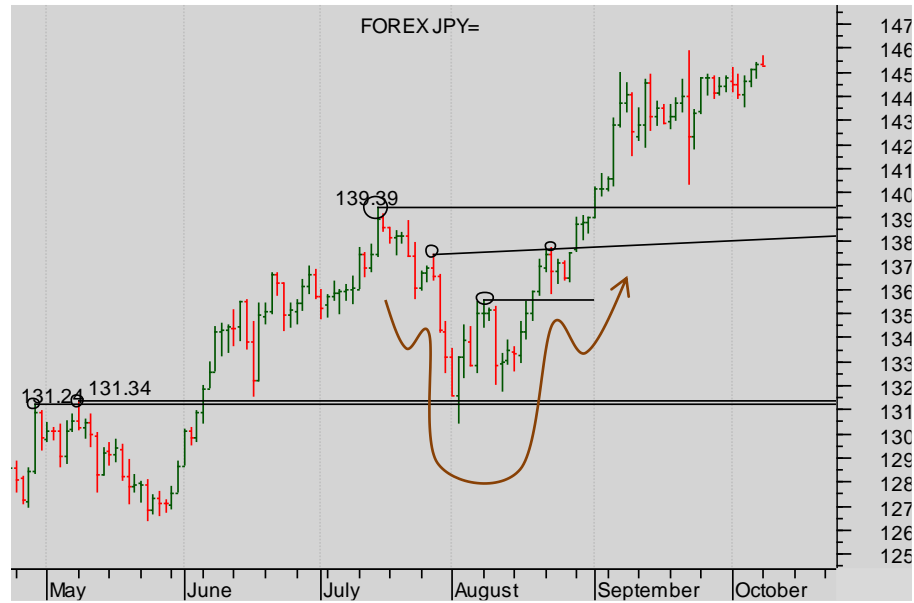
- + Ten Year US TNote
- + Ten Year German Bund
- + UK Gilt

Commodities

- + Oil
- + Gold

IMPLIED ASSET ALLOCATION

Currencies: Dollar Yen



Dollar Yen daily spot cash chart

Note the good structural support at the successive Prior Highs –

and the completion of a H&S reversal that drove the market higher still.



Summary

Currencies

- + Dollar Euro
- + Dollar Sterling
- + Dollar Yen
- + Sterling Euro

Stocks

- + S&P 500
- + EuroStoxx 50
- + FTSE 100
- + Nikkei 225

Bonds

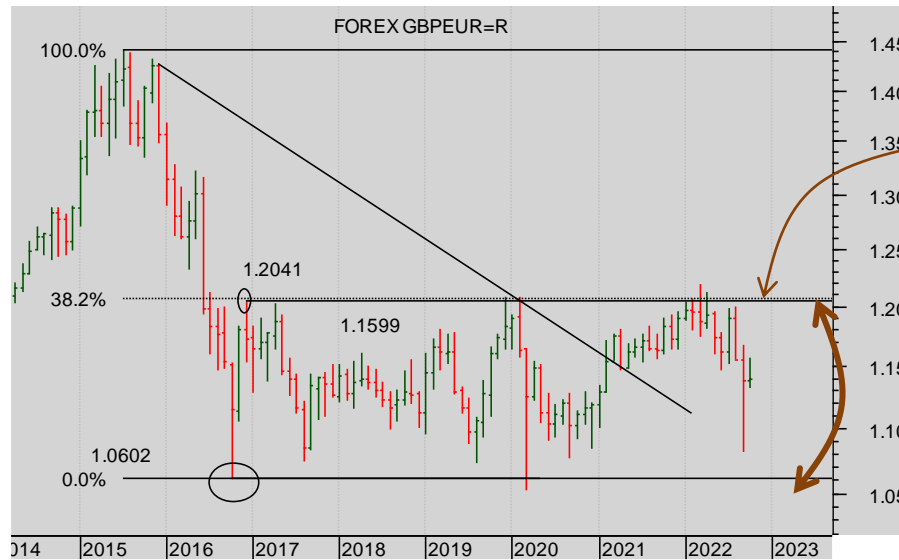
- + Ten Year US TNote
- + Ten Year German Bund
- + UK Gilt

Commodities

- + Oil
- + Gold

IMPLIED ASSET ALLOCATION

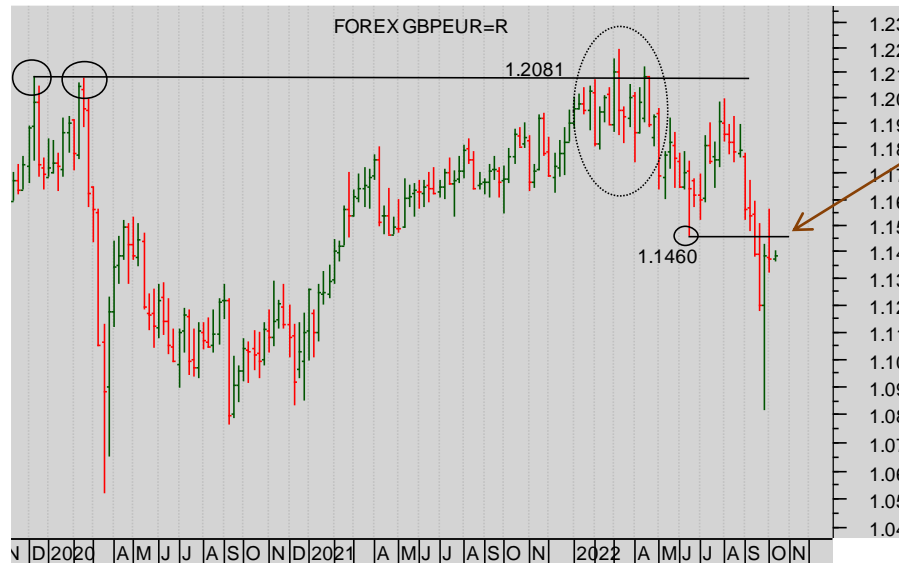
Currencies: Sterling Euro



Sterling Euro monthly spot cash chart

The attempted breakup through the 1.2041 top of the range FAILED.

The market remains within the range since 2016.



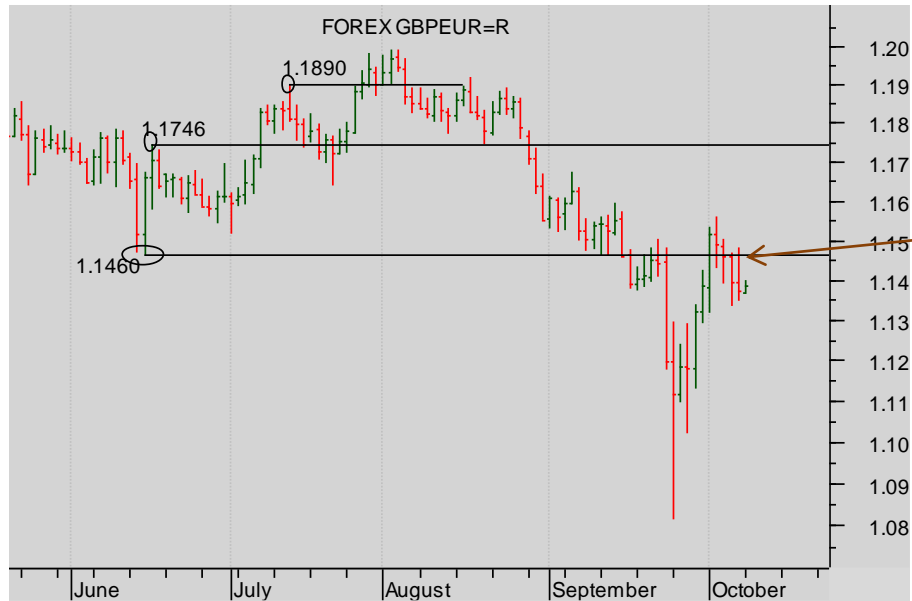
Sterling Euro weekly spot cash chart

Note the sharp two-week fall beneath the Prior Low... That is now powerful resistance...

More



Currencies: Sterling Euro



Sterling Euro daily spot cash chart

The market broke down through the Prior Low 1.1460... And looks like testing the downside again to see where the support comes in. .

Summary

Currencies

- + Dollar Euro
- + Dollar Sterling
- + Dollar Yen
- + **Sterling Euro**

Stocks

- + S&P 500
- + EuroStoxx 50
- + FTSE 100
- + Nikkei 225

Bonds

- + Ten Year US TNote
- + Ten Year German Bund
- + UK Gilt

Commodities

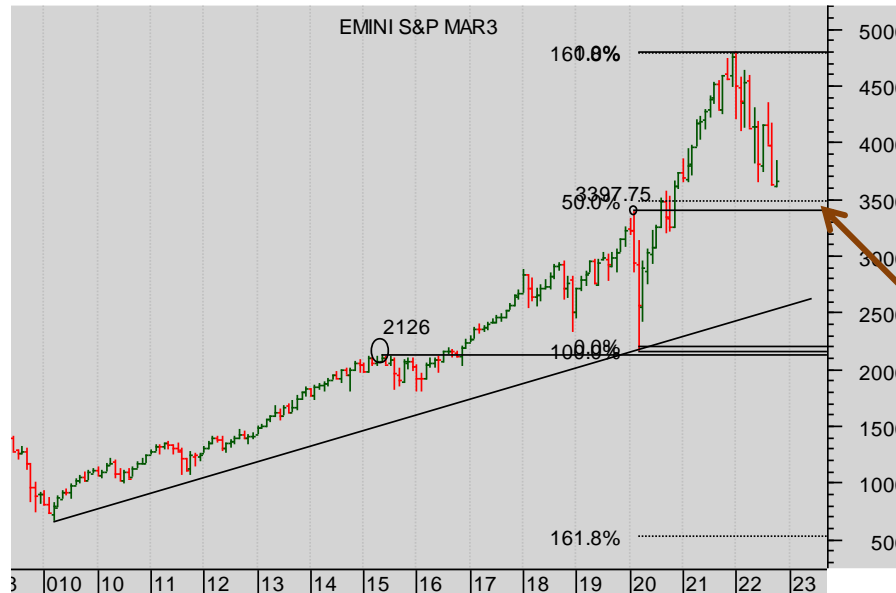
- + Oil
- + Gold

IMPLIED ASSET ALLOCATION



Stocks: CME S&P

STOCKS: We remain bears of all these markets bar the FTSE which is locked inside a clear trading range. The immediately weakest structures is surely the S&P. Both the EuroStoxx and S&P have well-established bear trends, and both are on the cusp of breaking down through short-term prior lows. Note as before the relatively well structure long-term shape of the Nikkei.



CME S&P 500 monthly cont. futures chart

The bear trend continues.

First powerful support now at 3397.50. (Note the co-incident Fibonacci support.)

Summary

Currencies

- + Dollar Euro
- + Dollar Sterling
- + Dollar Yen
- + Sterling Euro

Stocks

- + S&P 500
- + EuroStoxx 50
- + FTSE 100
- + Nikkei 225

Bonds

- + Ten Year US TNote
- + Ten Year German Bund
- + UK Gilt

Commodities

- + Oil
- + Gold

IMPLIED ASSET ALLOCATION

More



Stocks: CME S&P 500

Summary

Currencies

- + Dollar Euro
- + Dollar Sterling
- + Dollar Yen
- + Sterling Euro

Stocks

- + S&P 500
- + EuroStoxx 50
- + FTSE 100
- + Nikkei 225

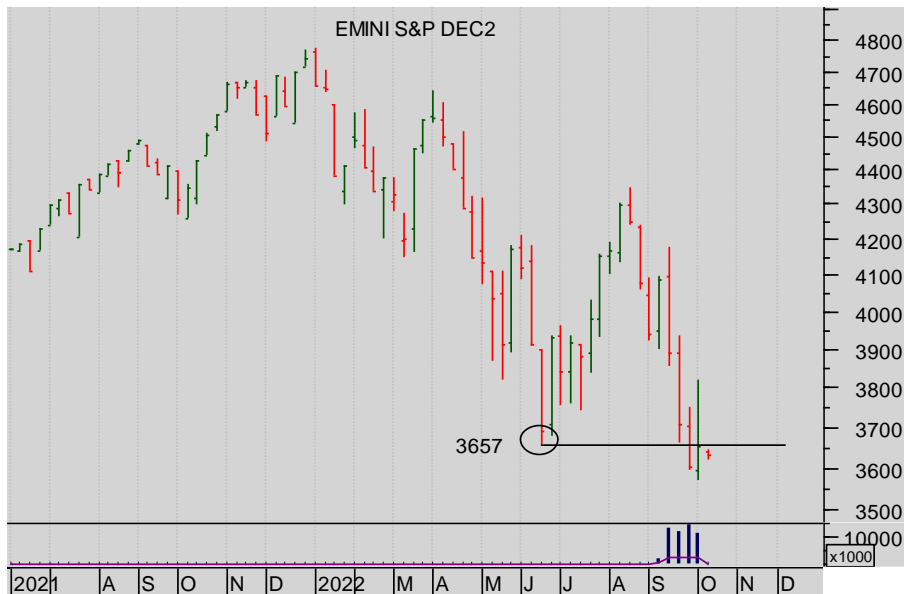
Bonds

- + Ten Year US TNote
- + Ten Year German Bund
- + UK Gilt

Commodities

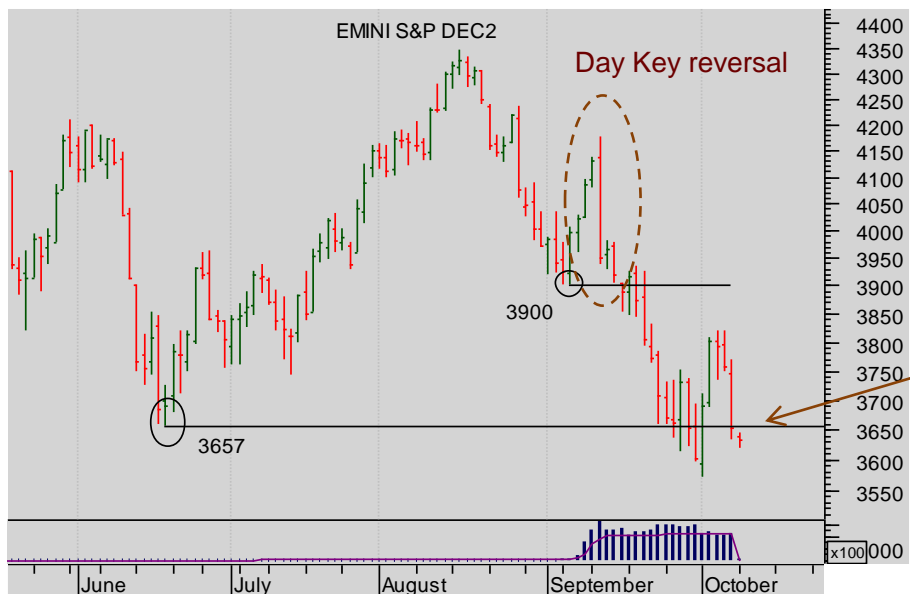
- + Oil
- + Gold

IMPLIED ASSET ALLOCATION



CME S&P 500 cont. weekly cont. chart

Note the market's pushdown through the Prior Low ... The next bear leg looks set to begin.



CME S&P 500 daily Sep 2022 chart

But this short-term picture is encouraging for the bears - a small H&S Reversal completing with a Day Key Reversal.

The market has broke beneath the Prior Low 3657, bounced, and looks to be re-penetrating that low.

A confirmed break beneath is likely to ratchet it lower still.

More



Stocks: Eurex EuroStoxx 50

Summary

Currencies

- + Dollar Euro
- + Dollar Sterling
- + Dollar Yen
- + Sterling Euro

Stocks

- + S&P 500
- + EuroStoxx 50
- + FTSE 100
- + Nikkei 225

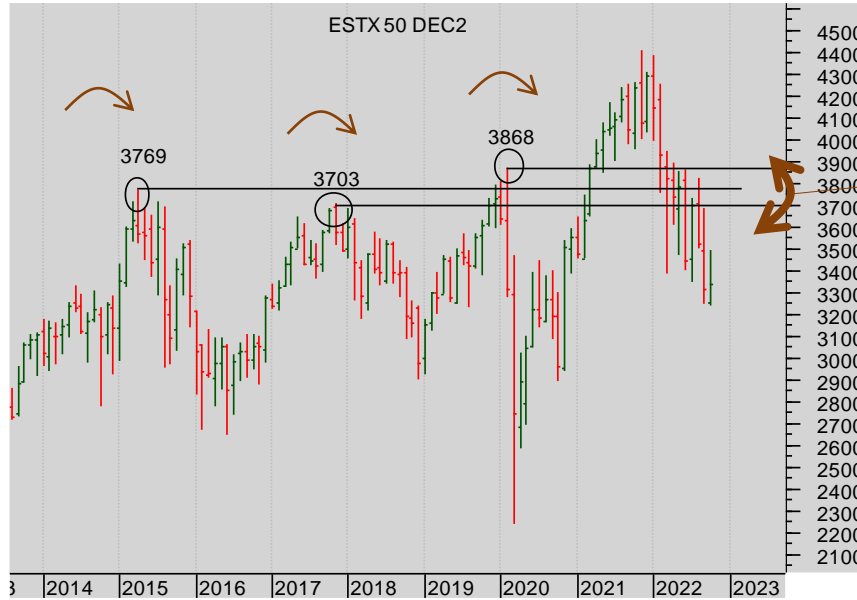
Bonds

- + Ten Year US TNote
- + Ten Year German Bund
- + UK Gilt

Commodities

- + Oil
- + Gold

IMPLIED ASSET ALLOCATION



Eurex EuroStoxx 50 monthly continuation futures chart

The market has clearly **smashed** the **VERY LONG-TERM SUPPORT** from a succession of Prior Highs.

The close on the month is convincingly LONG-TERM bearish.



Eurex EuroStoxx 50 weekly cont. futures chart

The pause since March ... Watch the range and the completion level.

A sustained break beneath the lower diagonal (approx. 3300) would be very bearish - completing the bear triangle and so suggesting a move of say 500 points lower to 2800 minimum.

More



Stocks: Eurex EuroStoxx 50

Summary

Currencies

- + Dollar Euro
- + Dollar Sterling
- + Dollar Yen
- + Sterling Euro

Stocks

- + S&P 500
- + **EuroStoxx 50**
- + FTSE 100
- + Nikkei 225

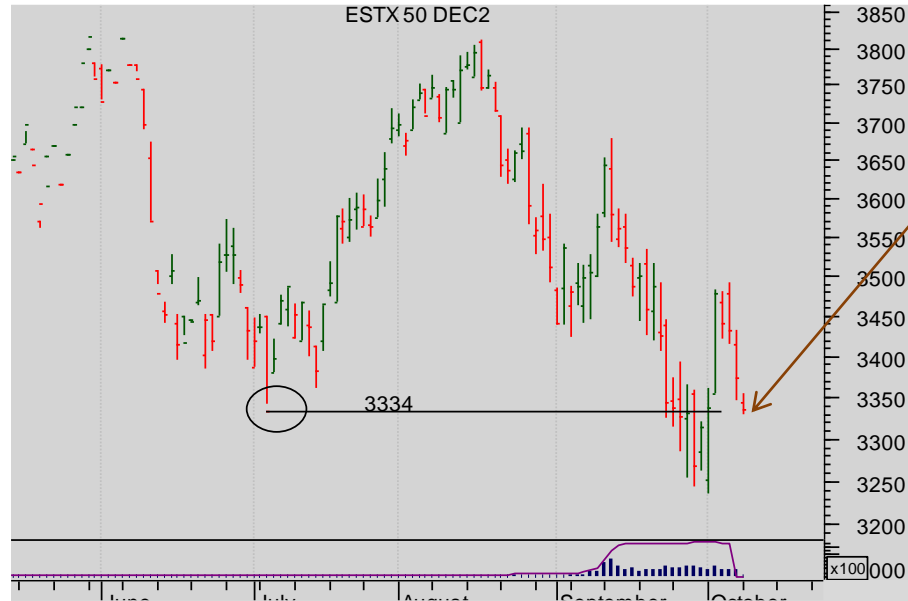
Bonds

- + Ten Year US TNote
- + Ten Year German Bund
- + UK Gilt

Commodities

- + Oil
- + Gold

IMPLIED ASSET ALLOCATION



Eurex EuroStoxx 50 daily Dec 22 futures chart

The detail of trading around 3334 – watch for a confirmed second break beneath



Summary

Currencies

- + Dollar Euro
- + Dollar Sterling
- + Dollar Yen
- + Sterling Euro

Stocks

- + S&P 500
- + EuroStoxx 50
- + **FTSE 100**
- + Nikkei 225

Bonds

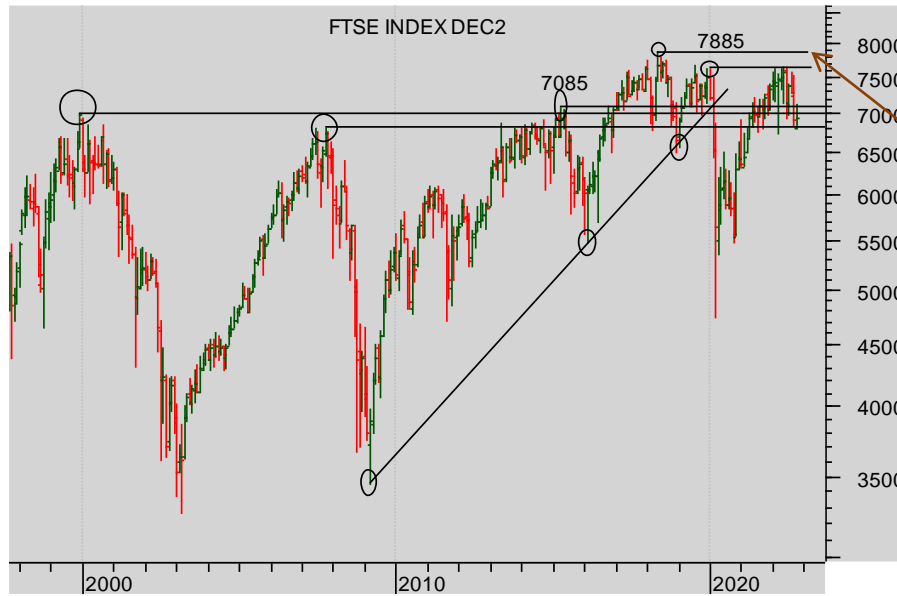
- + Ten Year US TNote
- + Ten Year German Bund
- + UK Gilt

Commodities

- + Oil
- + Gold

IMPLIED ASSET ALLOCATION

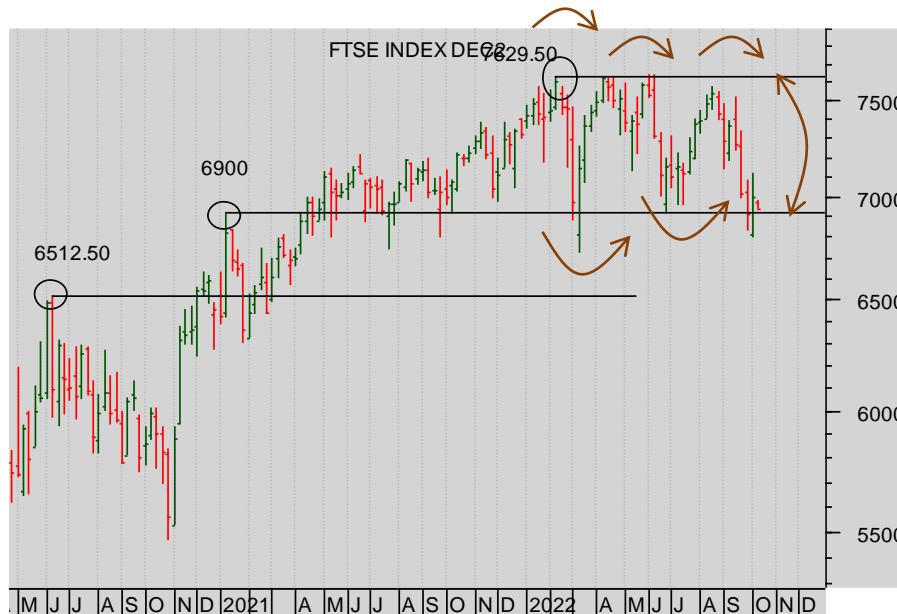
Stocks: Liffe FTSE 100



Liffe FTSE 100 Monthly continuation futures chart

The market has FAILED TO get above the Prior Highs – resulting in a **Monthly Key Reversal in June**.

Look closer.



Liffe FTSE 100 Weekly cont. futures chart

The market is trying to breakdown out of the wide trading range.

The market has **repeatedly** bounced off the first horizontal support of consequence 6900

Wait for the break before selling.

More



Stocks: Liffe FTSE 100

Summary

Currencies

- + Dollar Euro
- + Dollar Sterling
- + Dollar Yen
- + Sterling Euro

Stocks

- + S&P 500
- + EuroStoxx 50
- + **FTSE 100**
- + Nikkei 225

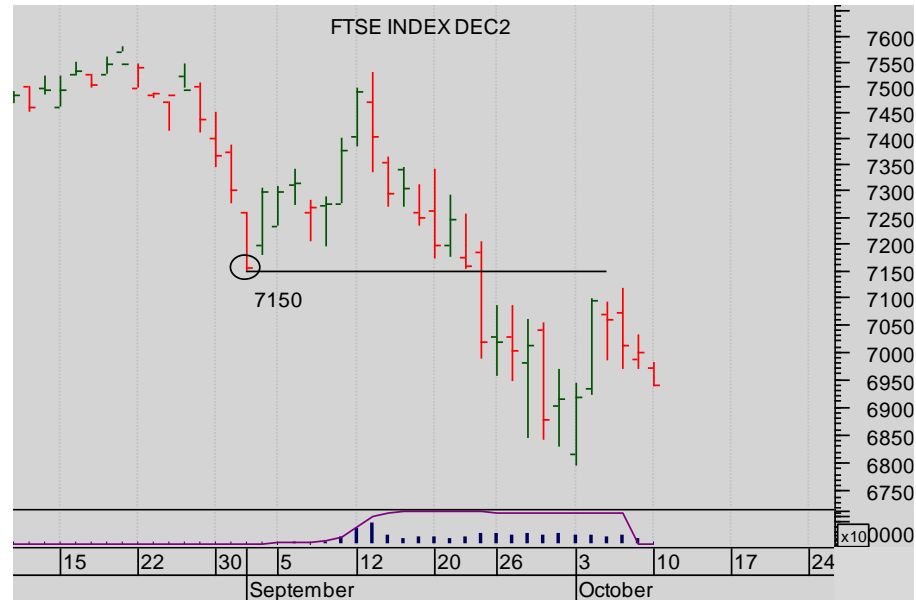
Bonds

- + Ten Year US TNote
- + Ten Year German Bund
- + UK Gilt

Commodities

- + Oil
- + Gold

IMPLIED ASSET ALLOCATION



Liffe FTSE 100 Dec 22 daily futures chart

And short-term the market has pushed beneath Prior Lows and created a powerful band of resistance above, helping drive on the short-term bear trend ...



Summary

Currencies

- + Dollar Euro
- + Dollar Sterling
- + Dollar Yen
- + Sterling Euro

Stocks

- + S&P 500
- + EuroStoxx 50
- + FTSE 100
- + **Nikkei 225**

Bonds

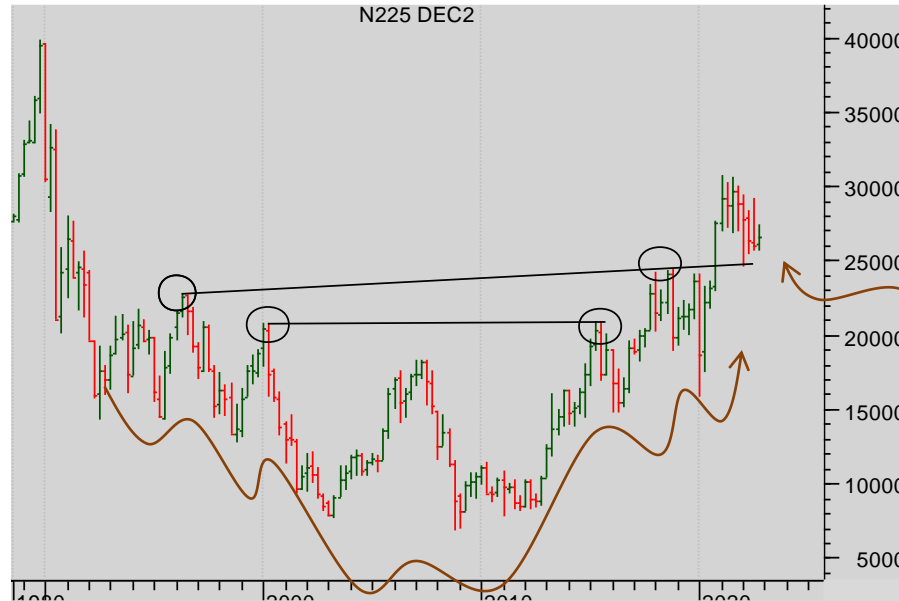
- + Ten Year US TNote
- + Ten Year German Bund
- + UK Gilt

Commodities

- + Oil
- + Gold

IMPLIED ASSET ALLOCATION

Stocks: OSE Nikkei 225

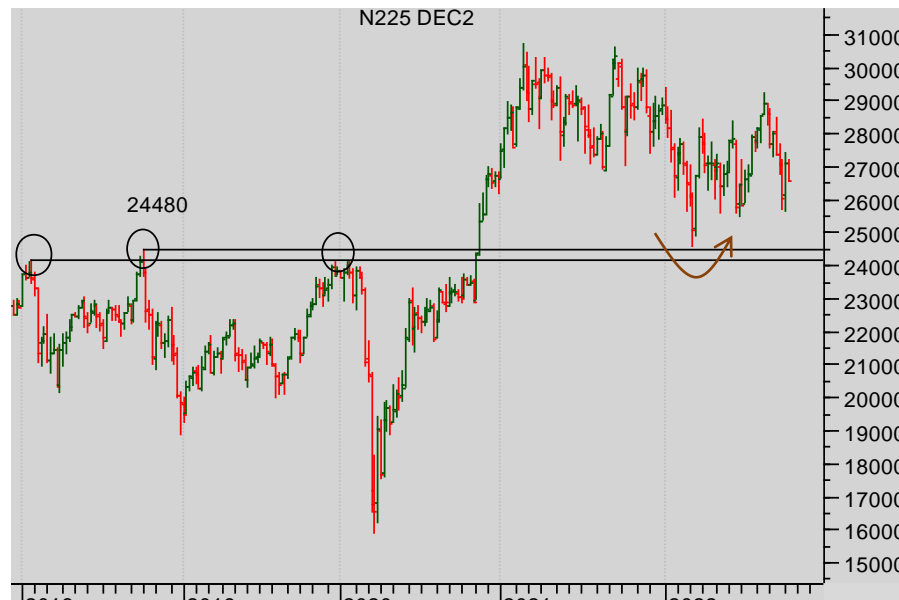


Nikkei 225 chart (Quarterly)

The market has completed a complex but identifiable bull reversal pattern driving the market up to 40000 or so (measured on a linear chart.)

The support lies beneath at the Neckline at around 25,000.

It looks strong



Nikkei 225 chart (WEEKLY continuation)

The retest of the Neckline and subsequent bounce are clear.

But there is not yet a close reversal formation.

More



Summary

Currencies

- + Dollar Euro
- + Dollar Sterling
- + Dollar Yen
- + Sterling Euro

Stocks

- + S&P 500
- + EuroStoxx 50
- + FTSE 100
- + Nikkei 225

Bonds

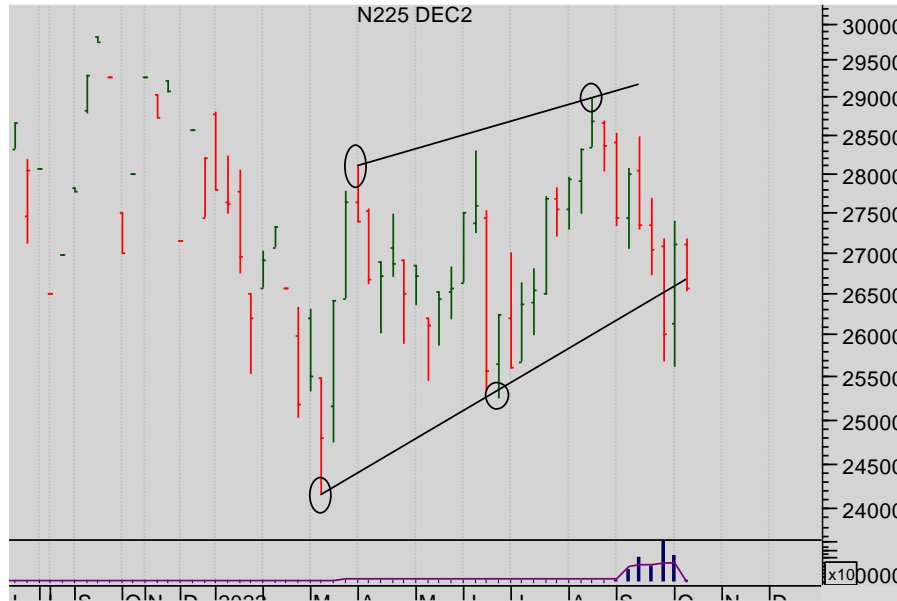
- + Ten Year US TNote
- + Ten Year German Bund
- + UK Gilt

Commodities

- + Oil
- + Gold

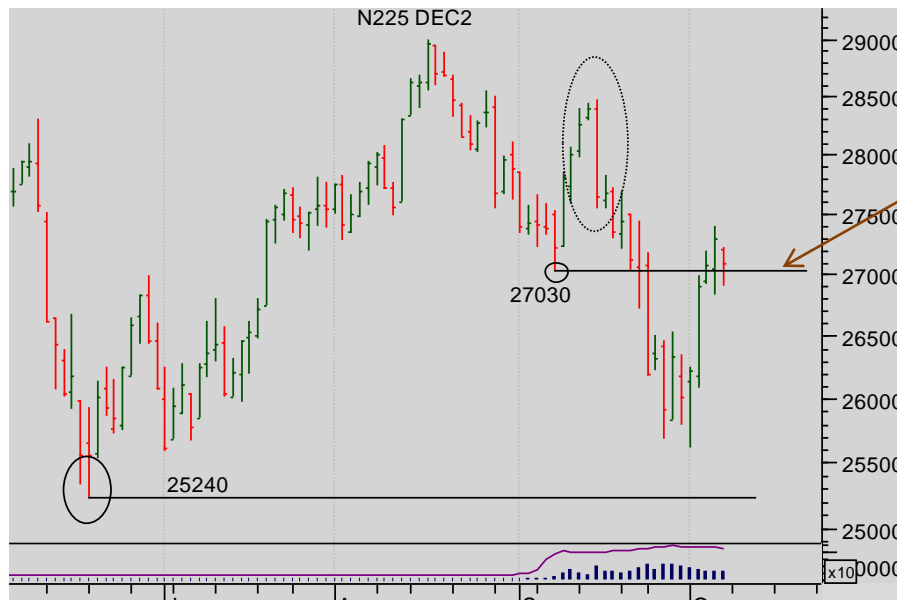
IMPLIED ASSET ALLOCATION

Stocks: OSE Nikkei 225



**Nikkei 225 chart weekly
Dec 2022 Future.**

Is this a completed bear
wedge?



**Nikkei 225 chart Daily
Dec 2022 future.**

That breakdown in detail.
27030 may be good
resistance ...



Bonds

BONDS: These markets, having paused and retraced somewhat over the last week, are now trending for higher yields still in all markets. There are grounds for a possible level of resistance having been reached in the UK gilt market – having moved further and faster than the other markets but that resistance to higher yields is clearly under threat too.

Summary

Currencies

- + Dollar Euro
- + Dollar Sterling
- + Dollar Yen
- + Sterling Euro

Stocks

- + S&P 500
- + EuroStoxx 50
- + FTSE 100
- + Nikkei 225

Bonds

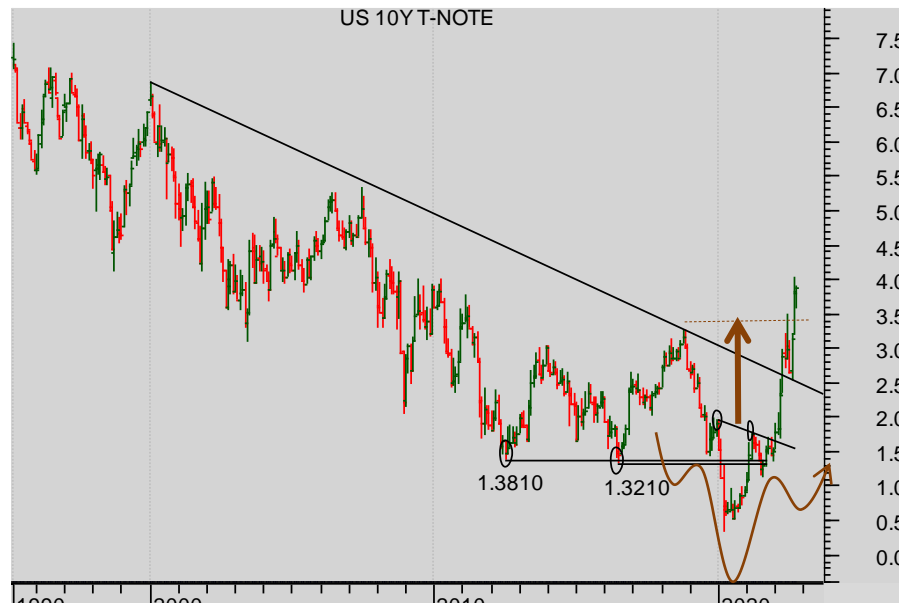
- + Ten Year US TNotes
- + Ten Year German Bund
- + UK Gilt

Commodities

- + Oil
- + Gold

IMPLIED ASSET ALLOCATION

Bonds: US Ten Year Notes (Yield)



US Ten Year Notes (Yield) monthly chart

The H&S Reversal pattern drove the market and the minimum measured move has been achieved.

Note the spectacular break of the diagonal bear trend resistance at 2.6.

And now, note too, the retracement and then the bounce off it ...

More



Summary

Currencies

- + Dollar Euro
- + Dollar Sterling
- + Dollar Yen
- + Sterling Euro

Stocks

- + S&P 500
- + EuroStoxx 50
- + FTSE 100
- + Nikkei 225

Bonds

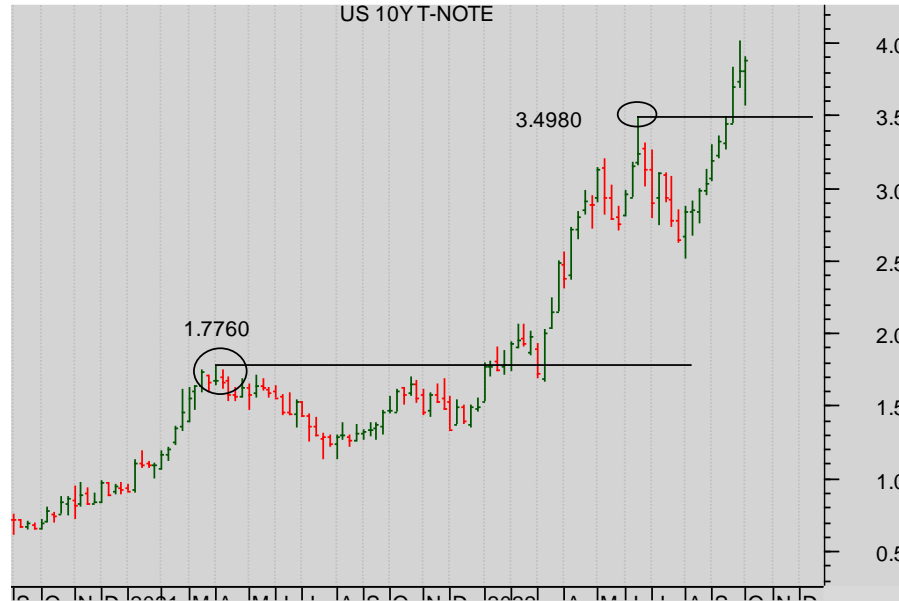
- + Ten Year US TNotes
- + Ten Year German Bund
- + UK Gilt

Commodities

- + Oil
- + Gold

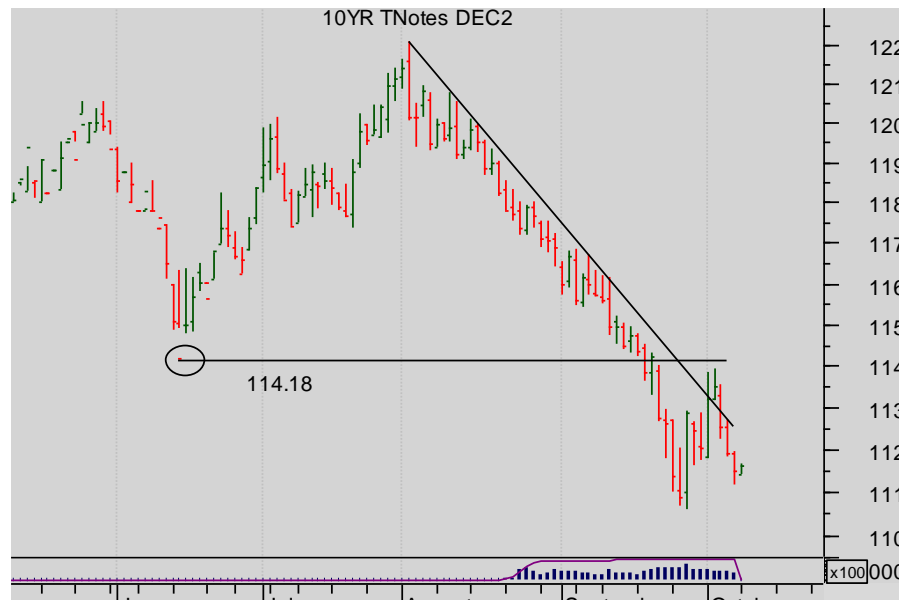
IMPLIED ASSET ALLOCATION

Bonds: US Ten Year Notes (Yield)



US Ten Year Notes (Yield) weekly continuation chart

The trend is well-set.



US Ten Year Notes Sep 2022 Futures price daily chart

Short-term, note the push beneath the Prior Low at 114.18 now good resistance.

(the day key reversal has had little effect)

More



Summary

Currencies

- + Dollar Euro
- + Dollar Sterling
- + Dollar Yen
- + Sterling Euro

Stocks

- + S&P 500
- + EuroStoxx 50
- + FTSE 100
- + Nikkei 225

Bonds

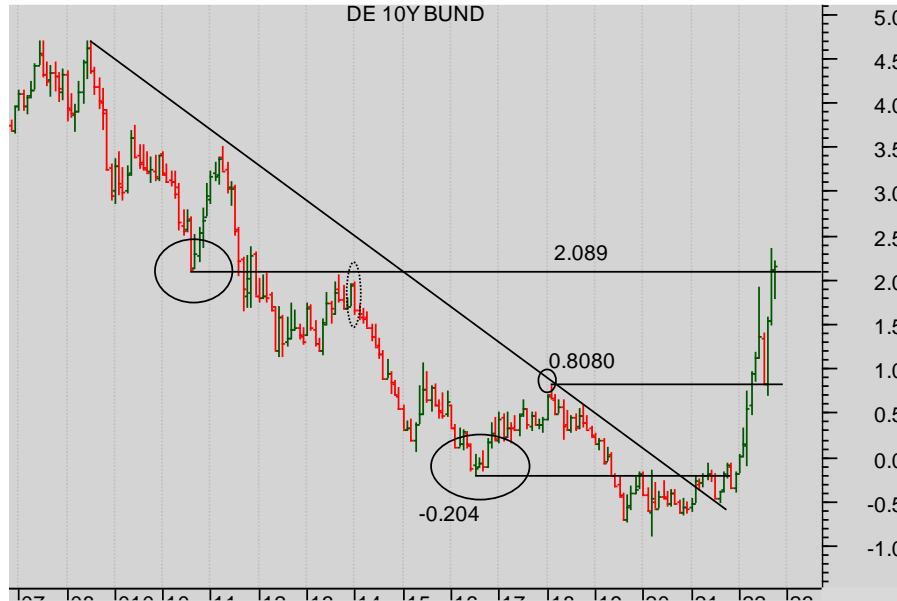
- + Ten Year US TNote
- + Ten Year German Bund
- + UK Gilt

Commodities

- + Oil
- + Gold

IMPLIED ASSET ALLOCATION

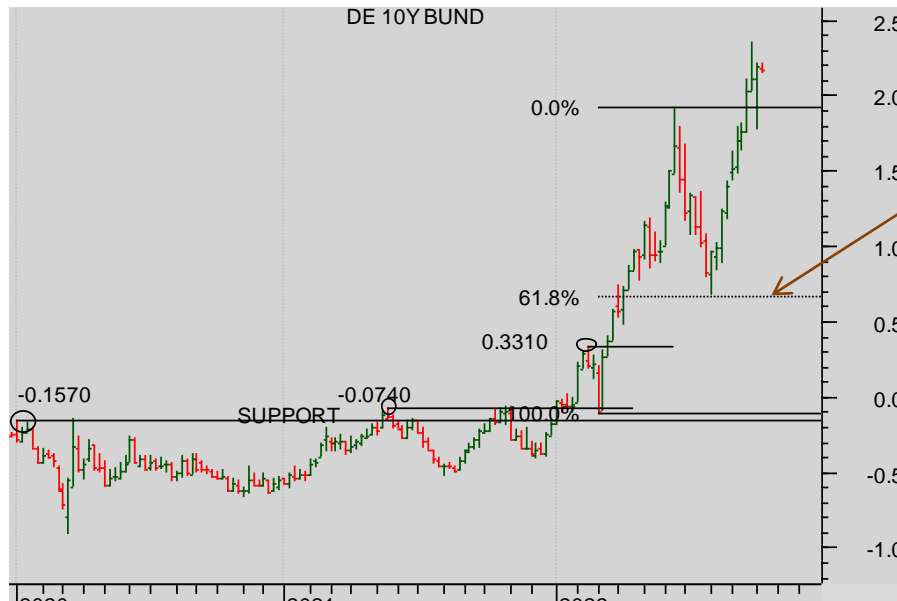
Bonds: German Bund yield chart



Bund monthly yield chart

This is interesting – the move to the 2.0890 level is to a place of good resistance to higher yields.

And it's clear there was no breakthrough on the close ... Yet.



Bund weekly yield chart

Note the sharp retracement to the Fibonacci support....and subsequent bounce.

The prior high just below 2 is an important reference point.... And now, support.

More



Bonds: German Bund yield chart

Summary

Currencies

- + Dollar Euro
- + Dollar Sterling
- + Dollar Yen
- + Sterling Euro

Stocks

- + S&P 500
- + EuroStoxx 50
- + FTSE 100
- + Nikkei 225

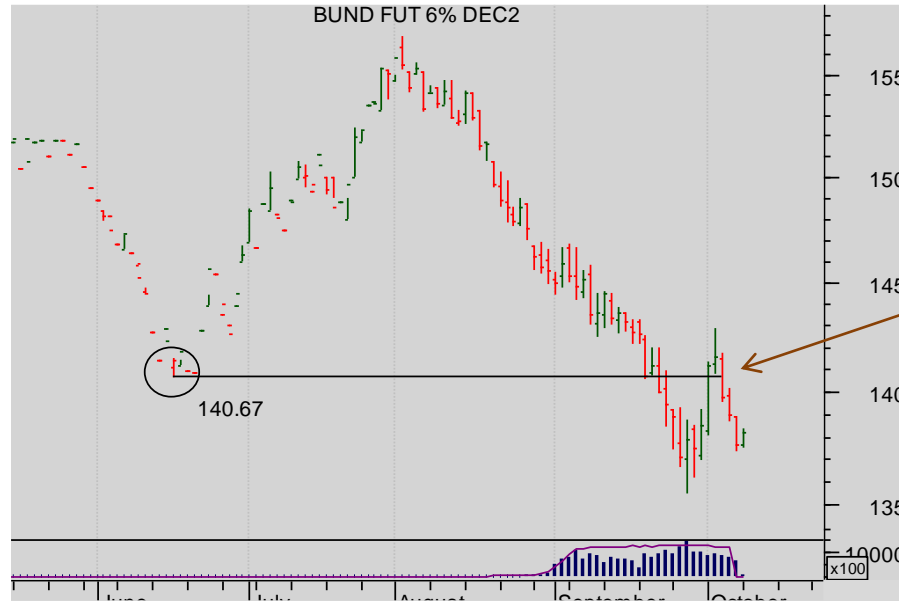
Bonds

- + Ten Year US TNote
- + **Ten Year German Bund**
- + UK Gilt

Commodities

- + Oil
- + Gold

IMPLIED ASSET ALLOCATION



Bund daily Dec 22 futures price chart

Short-term the push beneath the Prior Low is important suggesting more bear impetus. Resistance to any rallies evident at 140.67.



Summary

Currencies

- + Dollar Euro
- + Dollar Sterling
- + Dollar Yen
- + Sterling Euro

Stocks

- + S&P 500
- + EuroStoxx 50
- + FTSE 100
- + Nikkei 225

Bonds

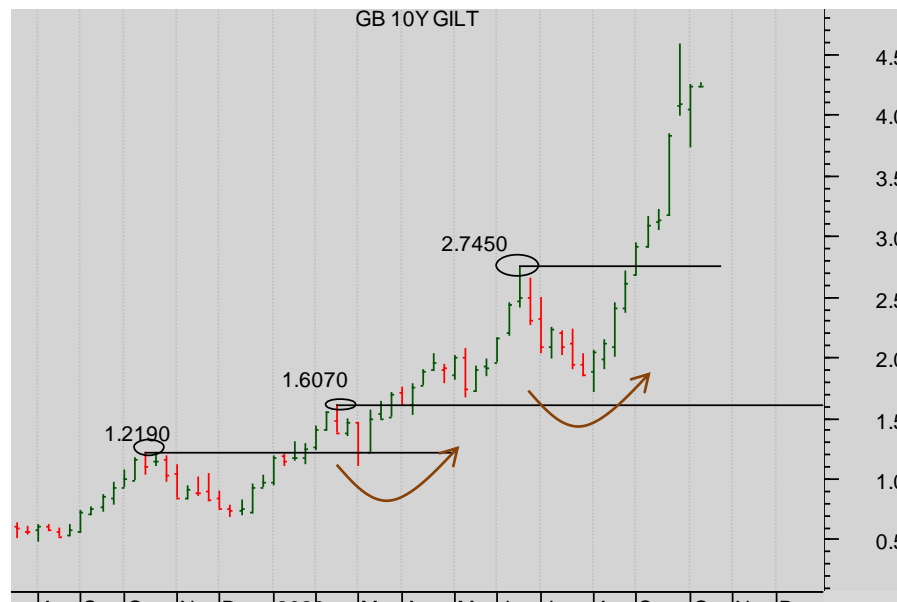
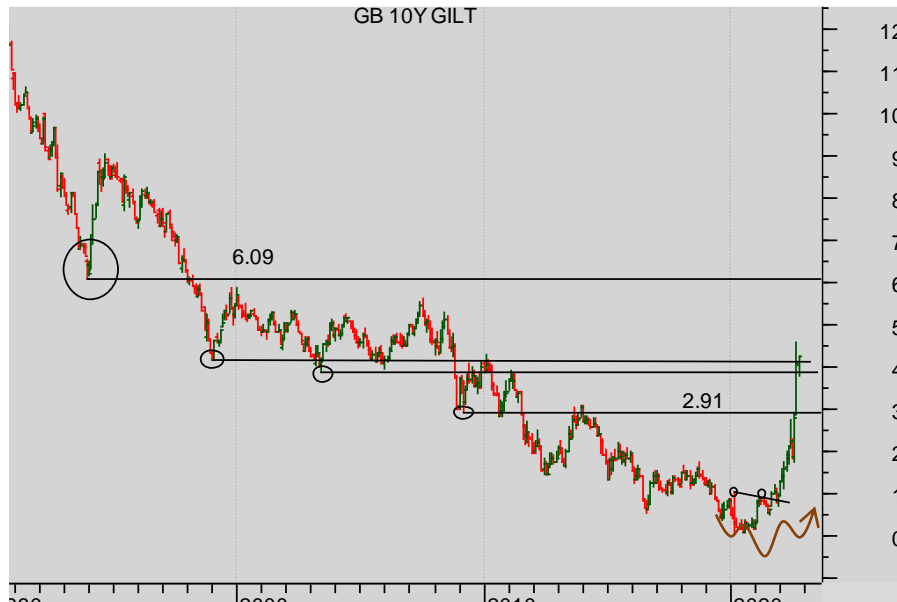
- + Ten Year US TNote
- + Ten Year German Bund
- + UK Gilt

Commodities

- + Oil
- + Gold

IMPLIED ASSET ALLOCATION

Bonds: UK Gilt yield chart



Gilt monthly yield chart

The market has rallied to massive long-term band of resistance around 4%.

Expect a pause here.

Gilt weekly yield chart

The well-structured rally – bouncing off the support from Prior Highs.

More



Summary

Currencies

- + Dollar Euro
- + Dollar Sterling
- + Dollar Yen
- + Sterling Euro

Stocks

- + S&P 500
- + EuroStoxx 50
- + FTSE 100
- + Nikkei 225

Bonds

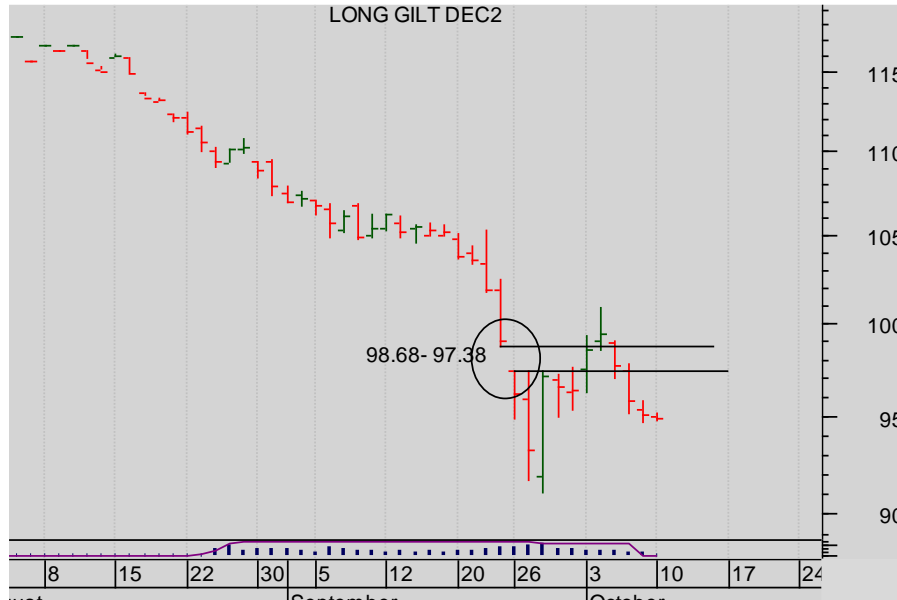
- + Ten Year US TNote
- + Ten Year German Bund
- + UK Gilt

Commodities

- + Oil
- + Gold

IMPLIED ASSET ALLOCATION

Bonds: UK Gilt yield chart



Gilt daily price chart

The short-term price trend is clear.

Note the slight band of resistance above the market.

More



Commodity

COMMODITIES:

Oil bounce was foretold in the medium-term chart (not necessarily in others) with the result that it looks to be in a wide trading range. Gold is pausing at a critical level, close to completing a very bearish Double Top.

Summary

Currencies

- + Dollar Euro
- + Dollar Sterling
- + Dollar Yen
- + Sterling Euro

Stocks

- + S&P 500
- + EuroStoxx 50
- + FTSE 100
- + Nikkei 225

Bonds

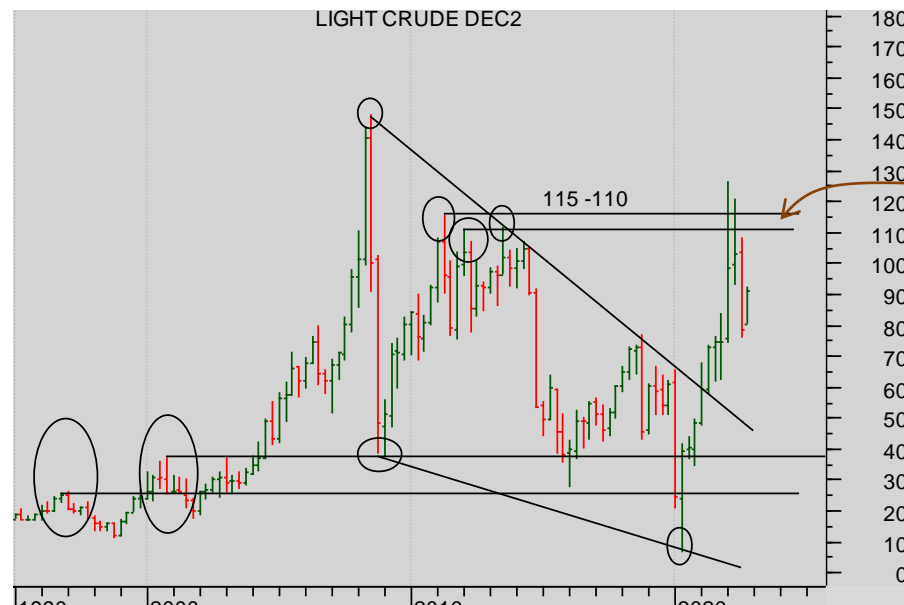
- + Ten Year US TNote
- + Ten Year German Bund
- + UK Gilt

Commodities

- + Oil
- + Gold

IMPLIED ASSET ALLOCATION

Commodities: Nymex WTI Oil



Nymex oil Quarterly continuation

The market has failed to push up through the old Highs and had fallen back into to wide trading.

More



Summary

Currencies

- + Dollar Euro
- + Dollar Sterling
- + Dollar Yen
- + Sterling Euro

Stocks

- + S&P 500
- + EuroStoxx 50
- + FTSE 100
- + Nikkei 225

Bonds

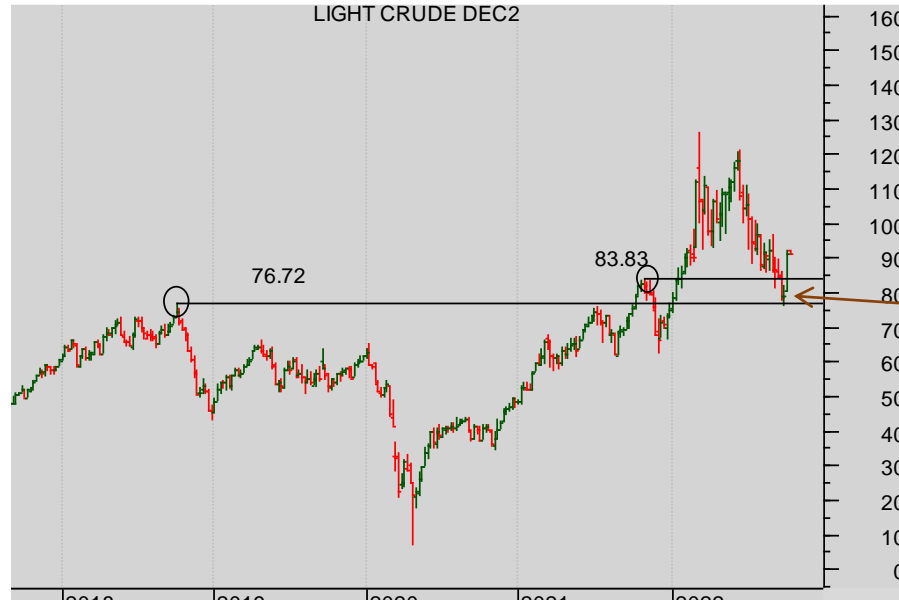
- + Ten Year US TNote
- + Ten Year German Bund
- + UK Gilt

Commodities

- + Oil
- + Gold

IMPLIED ASSET ALLOCATION

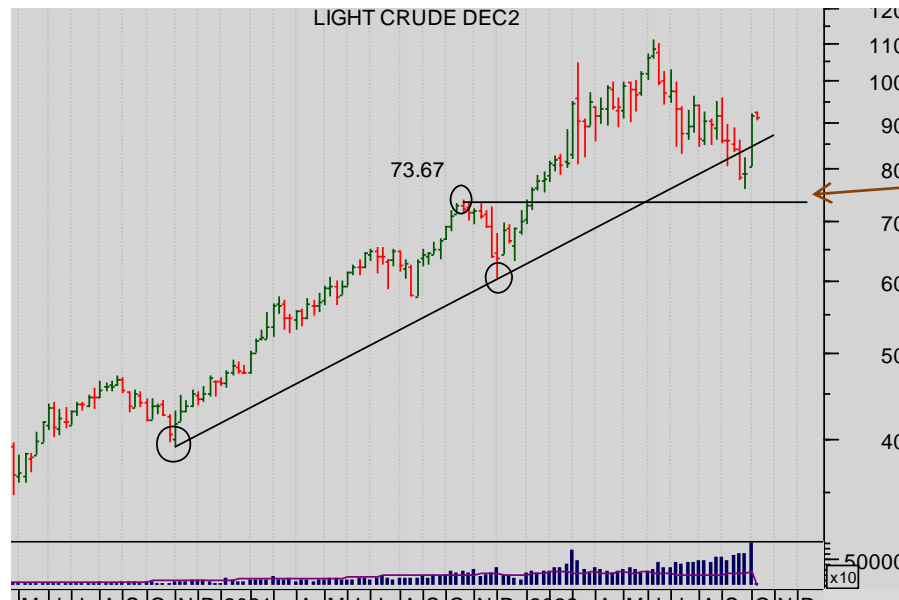
Commodities: Nymex WTI Oil



Nymex oil weekly cont. 2022 future

This looks like the market is testing and bouncing off the band of support from Prior highs.

A breakdown through \$76 would suggest further sharp declines But there's nothing there yet.



Nymex oil weekly DEC 2022 future

Watch the approach to the support from the Prior High at 73.67.



Commodities: Nymex WTI Oil

Summary

Currencies

- + Dollar Euro
- + Dollar Sterling
- + Dollar Yen
- + Sterling Euro

Stocks

- + S&P 500
- + EuroStoxx 50
- + FTSE 100
- + Nikkei 225

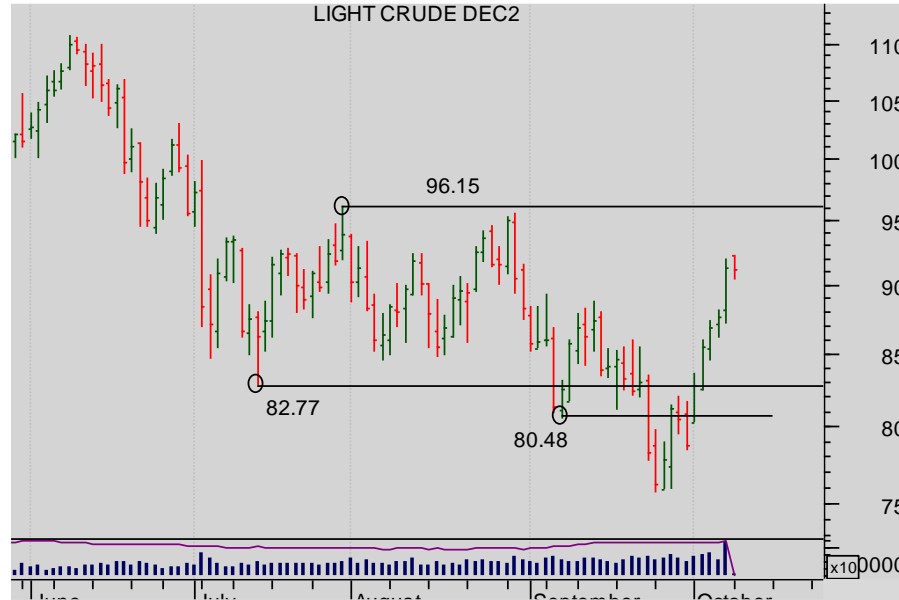
Bonds

- + Ten Year US TNote
- + Ten Year German Bund
- + UK Gilt

Commodities

- + Oil
- + Gold

IMPLIED ASSET ALLOCATION



Nymex oil daily Dec 2022 futures

The short-term rally back into the trading range.



Commodities: Comex Gold

Summary

Currencies

- + Dollar Euro
- + Dollar Sterling
- + Dollar Yen
- + Sterling Euro

Stocks

- + S&P 500
- + EuroStoxx 50
- + FTSE 100
- + OSE Nikkei 225

Bonds

- + Ten Year US TNote
- + Ten Year German Bund
- + UK Gilt

Commodities

- + Oil
- + Gold

IMPLIED ASSET ALLOCATION

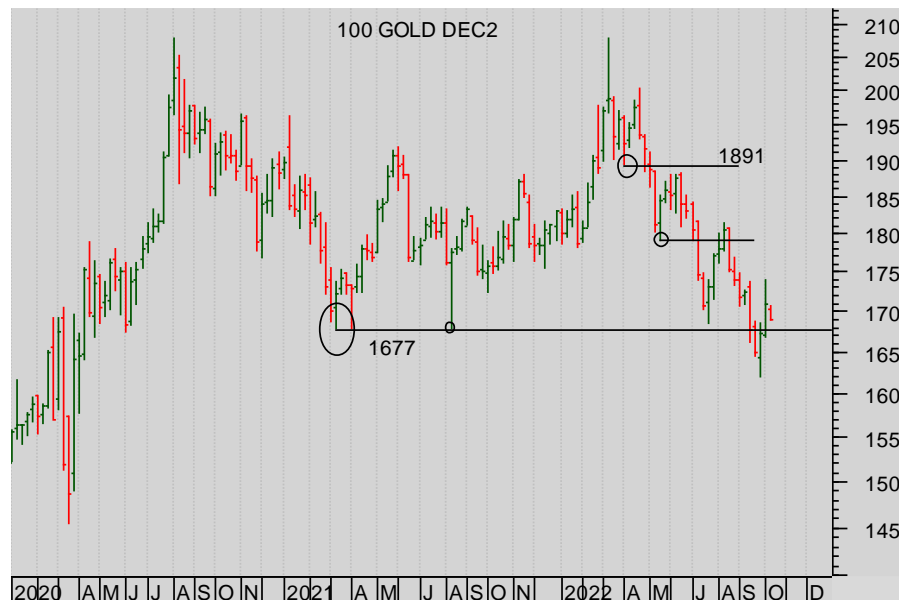


Nymex Gold Monthly

The dither at the 2011 Prior High of 1915.50 is unsurprising.

The break AND MONTHLY close beneath 1677 confirms a Bear Double Top.

That is powerfully bearish.



Nymex Gold Dec 22 weekly (continuation chart)

The rally back through 1677 after the monthly close caused confusion and uncertainty.

The bears need the rally to peter out ...



Summary

Currencies

- + Dollar Euro
- + Dollar Sterling
- + Dollar Yen
- + Sterling Euro

Stocks

- + S&P 500
- + EuroStoxx 50
- + FTSE 100
- + Nikkei 225

Bonds

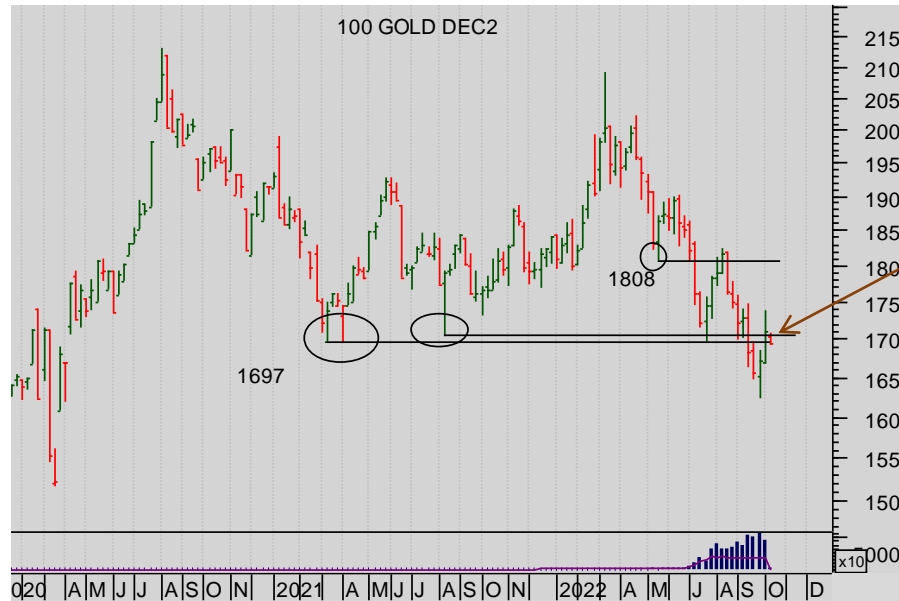
- + Ten Year US TNote
- + Ten Year German Bund
- + UK Gilt

Commodities

- + Oil
- + Gold

IMPLIED ASSET ALLOCATION

Commodities: Comex Gold



Nymex Gold Dec 2022 Weekly

This Dec chart is more encouraging for the bears.

It suggests the Double Top has completed
Indicating a move as low as **1300 or so...**



Nymex Gold Dec 2022 Daily

The short-term re-penetration in detail.

And then the failure there ...
The bears look to be in charge.



Summary

Currencies

- + Dollar Euro
- + Dollar Sterling
- + Dollar Yen
- + Sterling Euro

Stocks

- + S&P 500
- + EuroStoxx 50
- + FTSE 100
- + Nikkei 225

Bonds

- + Ten Year US TNote
- + Ten Year German Bund
- + UK Gilt

Commodities

- + Oil
- + Gold

More



The material and information set out in this research is not intended to be a quote of an offer to buy or sell any financial products. Any expression of opinion is based on sources believed to be reasonably reliable but is not guaranteed as to accuracy or completeness.

The material and information herein is general and for informational purposes only. Although Seven Days Ahead endeavours to provide useful information they make no guarantee as to the accuracy or reliability of the research.

The derivative market comprises volatility and considerable risks. To the maximum extent permitted by law no responsibility or liability can be accepted by Seven Days Ahead, any company or employee within its group for any action taken as a result of the information contained in this presentation. You are requested not to rely on any representation in this research and to seek specific advice from your accountant, legal adviser or financial services adviser when dealing with specific circumstances.

Seven Days Ahead is regulated by the UK Financial Conduct Authority.

[Back to main menu](#)